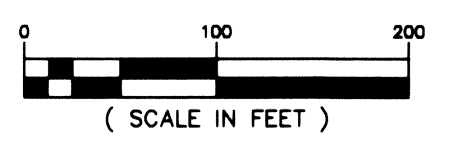
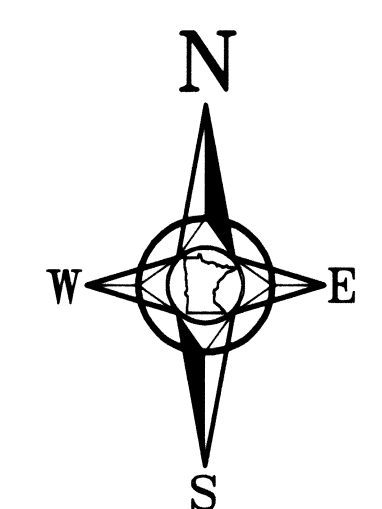


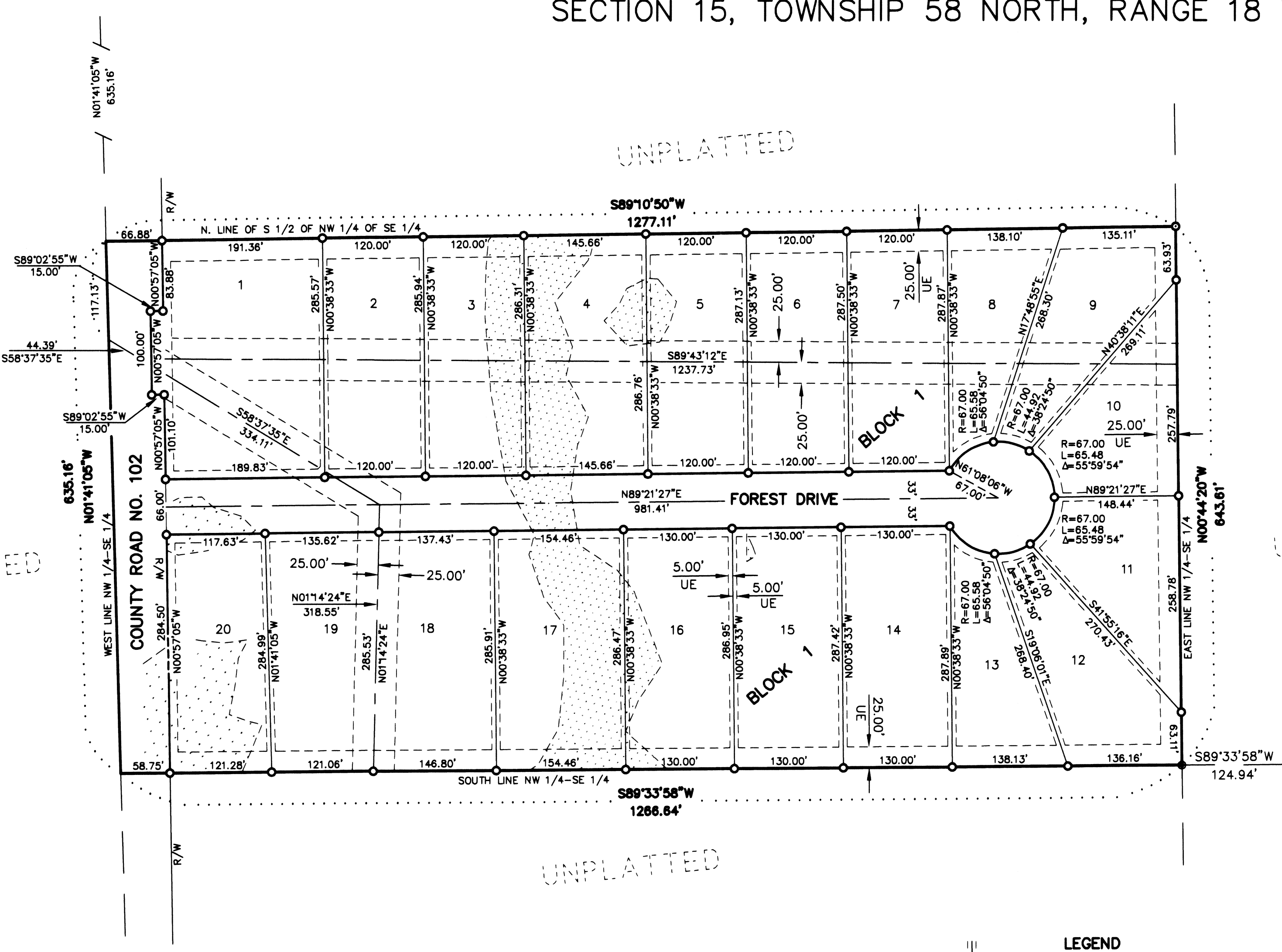
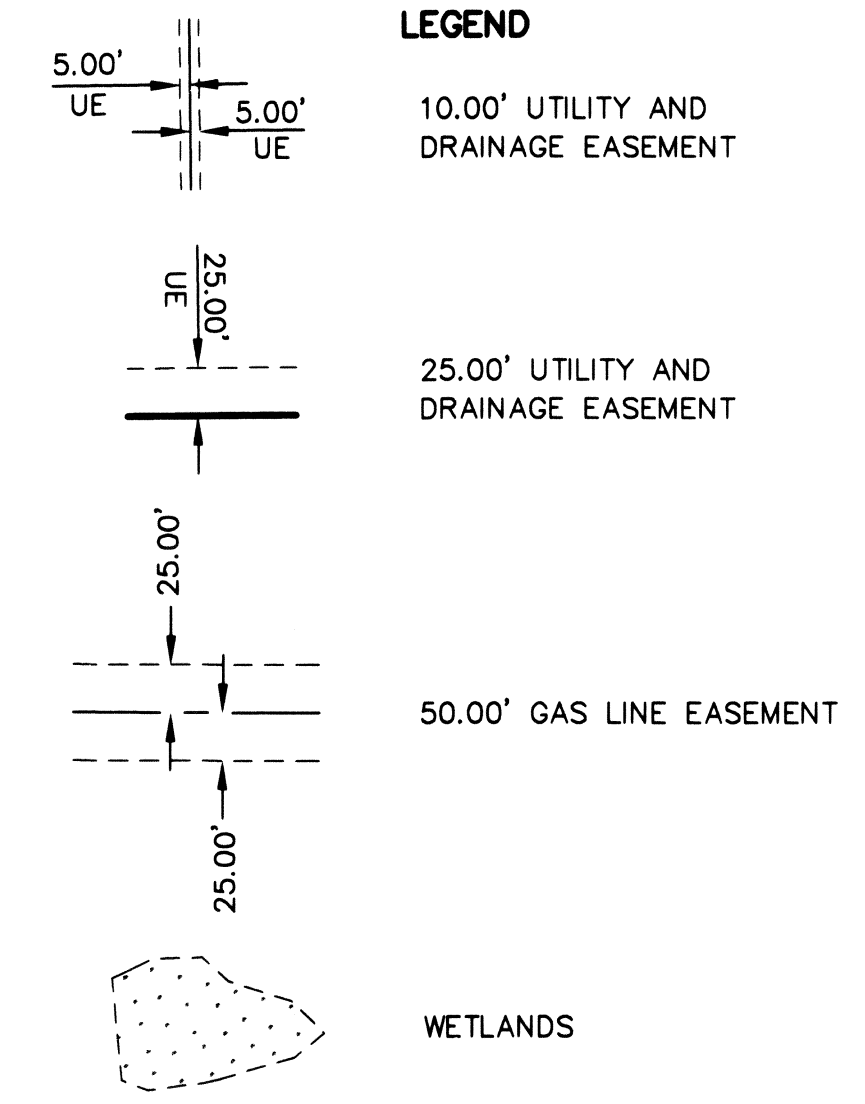
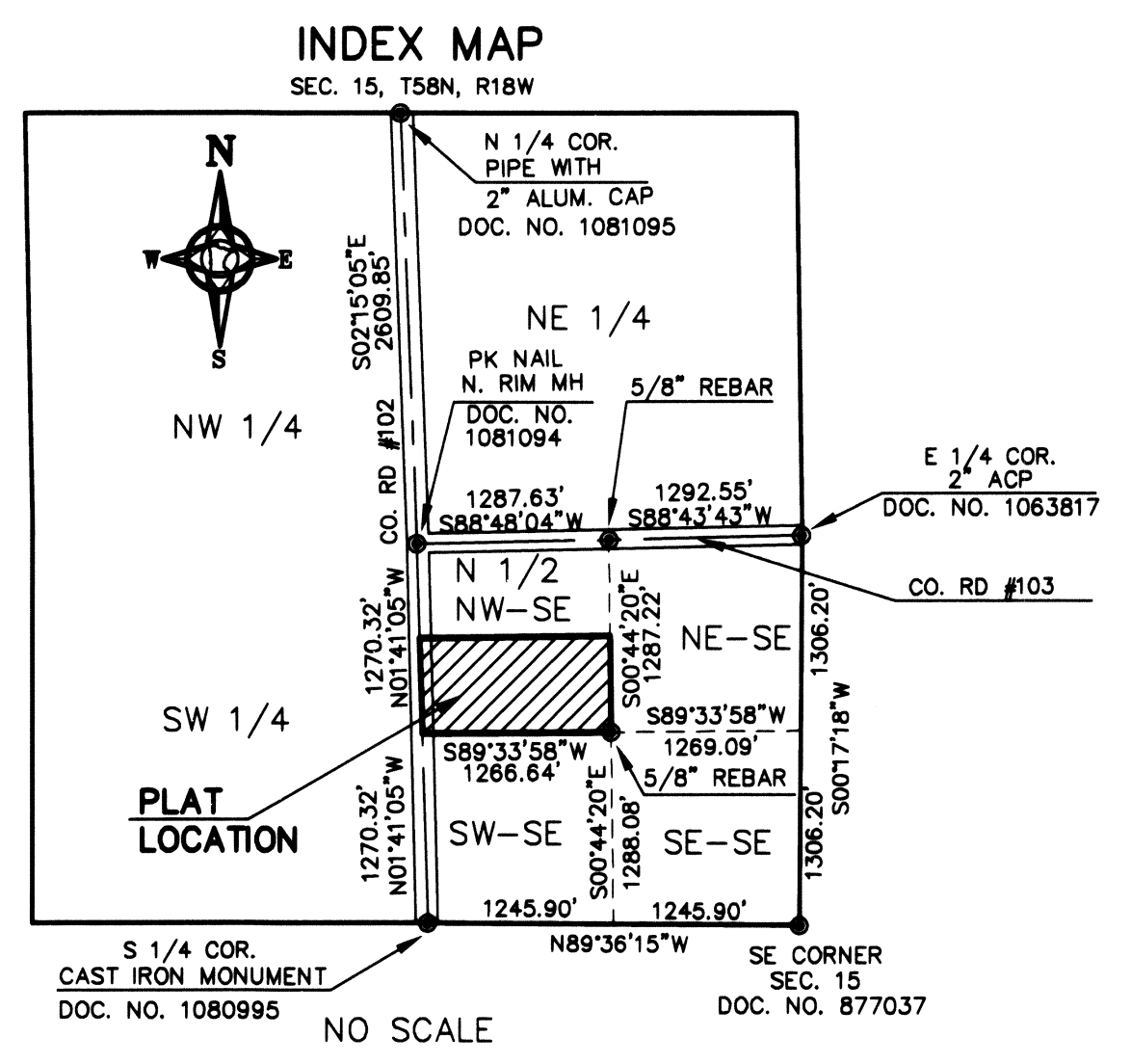
SOUTH FOREST GROVE
LOCATED IN THE NW1/4 OF THE SE1/4,
SECTION 15, TOWNSHIP 58 NORTH, RANGE 18 WEST



CENTER CORNER
SEC. 15, T58N, R18W
DOC. NO. 1081094

PK NAIL
N. RIM MH

S 1/4 CORNER
SEC. 15, T58N, R18W
CAST IRON MONUMENT
DOC. NO. 1080995



PLAT DEDICATION

KNOW ALL MEN BY THESE PRESENTS: That the Mountain Iron Economic Development Authority, being fee owners and proprietors of the following described property, lying in the County of St. Louis and the State of Minnesota, to wit:

The South Half of the Northwest Quarter of the Southeast Quarter of Section 15, Township 58 North, Range 18 West of the Fourth Principal Meridian, City of Mountain Iron, St. Louis County, Minnesota. Except minerals.

Has caused the same to be surveyed and platted as SOUTH FOREST GROVE and does hereby donate and dedicate to the public for public use forever the thoroughfares and utility easements as shown on the annexed plat.

In witness whereof said Mountain Iron Economic Development Authority, a public body, corporate and politic under the laws of the State of Minnesota, has caused these presents to be signed by its proper officers this 18th day of May, 2010. Anthony Zupancich and Craig J. Wainio, President and Executive Director, respectively, in and for said Mountain Iron Economic Development Authority.

BY Anthony Zupancich
STATE OF MINNESOTA) Anthony Zupancich, President
COUNTY OF ST. LOUIS)

BY Craig J. Wainio
STATE OF MINNESOTA) Craig J. Wainio, Executive Director
COUNTY OF ST. LOUIS)

The foregoing instrument was acknowledged before me this 18th day of May, 2010, by Anthony Zupancich and Craig J. Wainio, the correct officers of the Mountain Iron Economic Development Authority, a public body, corporate and politic under the laws of the State of Minnesota.

Justin Christian Sauer
Notary Public, St. Louis County, Minnesota
My Commission Expires January 31, 2013

Approved by the Planning Commission of the City of Mountain Iron, St. Louis County, Minnesota, on the 28th day of January, 2010.

Steve Skogman
Steve Skogman, Chairman
Planning and Zoning Commission

STATE OF MINNESOTA)
COUNTY OF ST. LOUIS)
The foregoing instrument was acknowledged before me this 18th day of May, 2010 by Steve Skogman, Chairman of the City of Mountain Iron Planning and Zoning Commission.



Justin Christian Sauer
Notary Public, St. Louis County, Minnesota
My Commission Expires January 31, 2013

I hereby certify that I have surveyed and platted the property described on this plat as SOUTH FOREST GROVE, that this plat is a correct representation of the survey, that all distances are correctly shown on the plat in feet and hundredths of a foot, that all monuments have been correctly placed in the ground as shown, that the outside boundary lines are correctly designated on the plat and that there are no wetlands or public highways to be designated other than as shown.

Nick C. Stewart
Nick C. Stewart, Licensed Land Surveyor
Minnesota License No. 43816

STATE OF MINNESOTA)
COUNTY OF ST. LOUIS)
The foregoing Surveyor's Certificate was acknowledged before me this 18th day of May, 2010 by Nick C. Stewart, Minnesota License No. 43816.

Thomas J. O'Malley
Notary Public, St. Louis County, Minnesota
My Commission Expires January 31, 2013

COUNTY SURVEYOR
STATE OF MINNESOTA)
COUNTY OF ST. LOUIS)
I hereby certify that this plat has been checked and approved this 18th day of May, 2010.

Thomas J. O'Malley
Thomas J. O'Malley St. Louis County Surveyor

COUNTY AUDITOR TAX STATEMENT
STATE OF MINNESOTA)
COUNTY OF ST. LOUIS)
No delinquent taxes due and transfer entered this 26th day of May, 2010.

By M. J. O'Malley
St. Louis County Auditor

COUNTY RECORDER
STATE OF MINNESOTA)
COUNTY OF ST. LOUIS)
I hereby certify that this instrument was filed in the office of the County Recorder for record on this 26th day of May, 2010 at 10:25 o'clock A.M. and was duly recorded as Document Number 1135553.

Abell
St. Louis County Recorder

BASIS OF BEARING:

THE WEST LINE OF THE NORTHWEST QUARTER OF THE SOUTHEAST QUARTER IS ASSIGNED A BEARING OF NORTH 01 DEGREES 41 MINUTES 05 SECONDS WEST.

Benchmark
ENGINEERING, INC.
CIVIL & ENVIRONMENTAL ENGINEERING • LAND SURVEYING
PLANNING • LAND DATABASE MAPPING
8878 Main Street • Post Office Box 261
Mountain Iron, Minnesota 55768
Phone 218/735-8914