

**MOUNTAIN IRON CITY COUNCIL MEETING
COMMUNITY CENTER
MOUNTAIN IRON ROOM
MONDAY, NOVEMBER 3, 2008 - 6:30 P.M.
A G E N D A**

- I. Roll Call
 - II. Consent Agenda
 - A. Minutes of the October 20, 2008, Regular Meeting (#1-16)
 - B. Communications (#78-79)
 - C. Receipts
 - D. Bills and Payroll
 - III. Public Forum
 - A. Public Hearing – Park Ridge Drive (#17-18)
 - B. Public Hearing – Unity Drive (#17, 19)
 - C. Public Hearing – Unity Drive (#17,20)
 - IV. Committee and Staff Reports
 - A. Mayor’s Report
 - 1. COW Meetings (#21)
 - B. City Administrator’s Report
 - 1. Leave of Absence Request (#22)
 - C. Director of Public Works Report
 - 1. City Hall Boiler Replacement
 - D. Sheriff’s Department Report
 - E. City Engineer’s Report
 - 1. Release of Retainage – Locomotive Park Fencing (#26-27)
 - 2. Change Order Number 1 – 2008 Overlay Project (#28)
 - 3. Final Pay Request – 2008 Overlay Project (#29-31)
 - 4. Final Pay Request – RV Dump Station (#32-33)
 - 5. Final Pay Request – South Grove Park Sidewalk (#34-36)
 - F. Fire Department
 - 1. Grass Rig Specifications (#37-64)
 - 2. Fire Relief Pension Increase (#65-66)
 - G. Liaison Reports
 - V. Unfinished Business
 - A. Mountain Manor Remodel (#67-68)
 - VI. New Business
 - A. Resolution Number 52-08 Adopting Assessment (#69)
 - B. Resolution Number 53-08 Adopting Assessment (#70)
 - C. Resolution Number 54-08 Adopting Assessment (#71)
 - D. Land Purchase Request (#72-76)
 - E. Street Light Request (#77)
 - F. Communications (#78-79)
 - VII. Open Discussion on City Business
 - VIII. Announcements
 - IX. Adjourn
- # Denotes page number in packet

MINUTES
MOUNTAIN IRON CITY COUNCIL
OCTOBER 20, 2008

Mayor Skalko called the City Council meeting to order at 6:34 p.m. with the following members present: Joe Prebeg, Jr., Tony Zupancich, Alan Stanaway, Ed Roskoski, and Mayor Gary Skalko. Also present were: Craig J. Wainio, City Administrator; Jill M. Anderson, Municipal Services Secretary; Sam Aluni, City Attorney; Don Kleinschmidt, Director of Public Works; Tom Cvar, Fire Chief; and John Backman, Sergeant.

It was moved by Skalko and seconded by Prebeg that the consent agenda be approved as follows:

1. Approve the minutes of the October 6, 2008, City Council meeting as submitted.
2. That the communications be accepted, placed on file, and those requiring further action by the City Council be acted upon during their proper sequence on the agenda.
3. To acknowledge the receipts for the period October 1-15, 2008, totaling \$373,766.24, (a list is attached and made a part of these minutes).
4. To authorize the payments of the bills and payroll for the period October 1-15, 2008, totaling \$414,764.29, (a list is attached and made a part of these minutes).
NOTE: Removing the Colosimo, Patchin, Kearney & Brunfelt bill for \$136.00.

The motion carried on the following roll call vote: Prebeg, yes; Zupancich, yes; Stanaway, yes; Roskoski, abstain; and Skalko, yes.

It was moved by Zupancich and seconded by Stanaway to accept the recommendation of the Planning and Zoning Commission and approve the Conditional Use Permit for Keith Altobelli, 8366 Marigold Street, Mountain Iron, to construct an addition onto an accessory building that would exceed the 900 square feet allowed, on parcel 175-0069-000590. The motion carried.

It was moved by Zupancich and seconded by Prebeg to accept the recommendation of the Planning and Zoning Commission and approve the Conditional Use Permit for Douglas and Jenny Blake, 5727 Mesabi Avenue, Mountain Iron, to construct an accessory building that would exceed the 900 square feet allowed, on parcel 175-0010-001820. The motion carried.

It was moved by Roskoski and seconded by Zupancich to accept the recommendation of the Planning and Zoning Commission and approve the Variance for Douglas and Jenny Blake, 5727 Mesabi Avenue, Mountain Iron, to construct an accessory building five feet from the south and west sides of the lot lines on parcel 175-0010-001820. The motion carried.

The Mayor updated the Council on the following:

- Public Television. Advised the residents of Mountain Iron that the City Council meetings will now be on Channel 7 instead of Channel 12.
- County Road 7. Informed the Council that he met with Commissioner Nelson and was informed that Saint Louis County would be resurfacing County Road 7 from Highway 101 south to Highway 169 in 2009. Also, County Road 102 would be completed from County Road 7 to Mud Lake Road in South Grove in 2009.
- Mesabi Daily News Article. Updated the Council on the wind mills not working properly. He spoke with Representatives of Minnesota Power and they told him that the blades were faulty and the issue would be rectified soon.
- Federal Government Questions. Suggested that people contact Senator Klobuchar's office in Virginia.
- Election. Encouraged the residents to get out and vote for their candidates.

The City Administrator updated the Council on the following:

- Holiday Inn Express. He met with the developer and that everything is being constructed according to schedule and it is set to be open in June of 2009. The developer stated that he was pleased with the building site.
- Unity Second Addition Sign. The sign is scheduled to be installed on October 23, 2008 at the southeast corner of Emerald Avenue and Highway 169.

It was moved by Stanaway and seconded by Prebeg to authorize the purchase of one electric transformer from WESCO at the low quoted price of \$12,146.00. The motion carried unanimously on a roll call vote.

It was moved by Zupancich and seconded by Prebeg to adopt the Identity Theft Prevention Program, (a copy is attached and made a part of these minutes). The motion carried.

It was moved by Stanaway and seconded by Zupancich to approve the amendment to the services agreement with the Minnesota Municipal Utilities Association for the Safety Management Program at an annual cost of \$8,150.00, (a copy is attached and made a part of these minutes). The motion carried.

Councilor Roskoski asked the Director of Public Works when the next Utility Advisory Board meeting was scheduled. He stated that the meeting was set for the 4th Tuesday in November. He said that the Board would be reviewing the 2009 budgets. Councilor Roskoski asked if the Board would be reviewing the County solid waste fee. The Director of Public Works said that he did not think the Board would be making any changes, but he would put the item on the next agenda.

Councilor Roskoski asked the Director of Public Works about the Park and Recreation Board status on the rink closures and the handicapped swings. The Director of Public

Works said that the Board is still reviewing the status of the rinks and the handicapped swings are in the 2009 budgets.

The Sergeant reported that there have been several break-ins recently in several Commercial Businesses in the Plaza 53 area and on Enterprise Drive North and South.

It was moved by Zupancich and seconded by Skalko to authorize payment request number nine to Utility Systems of America Incorporated for the Unity Addition Phase II Residential Development in the amount of \$85,993.83. The motion carried unanimously on a roll call vote.

It was moved by Stanaway and supported by Zupancich to authorize payment request number four to Ulland Brothers Incorporated for the 2007 Street Improvements in the amount of \$33,840.53. The motion carried unanimously on a roll call vote.

It was moved by Prebeg and seconded by Roskoski to authorize the hiring of the following four firefighters contingent upon them passing a background check, a physical examination, and a drug and alcohol test:

Erik Jonassen
James Kochevar
David Felton
Daniel Ronchetti

The motion carried.

The Council discussed the assessments for Park Ridge Drive. The City Attorney said that it is the option of the City whether they want to assess for the entire project or the City could remove the amount paid for by grant funding, it is a City policy issue. The Attorney recommended that the City assess for the entire project amount to improve the ability of the City to obtain future grant funding.

During the Liaison reports, Councilor Roskoski reported that the Culture and Tourism Grant application for the Locomotive Canopy, as prepared by Benchmark Engineering, for the Civic Association, had been submitted to IRRRA.

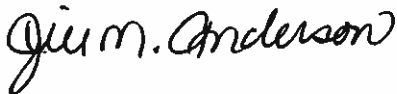
It was moved by Roskoski and seconded by Zupancich to direct City Staff to place five advertisements in the Mesabi Daily News, 2 columns wide by 4 column inches long, stating Mountain Iron's Calendar Parking regulations and dates of the ordinance being in force, November 1st through April 1st. And further, to place the notice on the Public Television Channel 7 announcements. The **motion failed** on the following roll call vote: Prebeg, no; Zupancich, no; Stanaway, no; Roskoski, yes; and Skalko, no.

It was moved by Prebeg and supported by Stanaway to direct City Staff to place appropriate advertisements in the Mesabi Daily News notifying the public on the Winter Calendar Parking regulations in the City. The motion carried.

During the open discussion, Councilor Prebeg said that the Park and Recreation Board had been accused of closing rinks and it bothers him that there are accusations that they are taking something away from the Mountain Iron children. The Board looks at all of the statistics for usage, and that they are accountable to the taxpayers for what activities that are being provided and that the resources are being utilized by the children in Mountain Iron.

At 7:18 p.m., it was moved by Skalko and seconded by Prebeg that the meeting be adjourned. The motion carried.

Submitted by:



Jill M. Anderson, CMC/MMCA
Municipal Services Secretary

www.mtniron.com

COMMUNICATIONS

1. League of Minnesota Cities, forwarding information regarding the 2009 Draft Legislative Policies.
2. Mediacom, forwarding price change information and additional channels.

Summary By Category And Distribution

Category	Distribution	Amount
UTILITY	UTILITY	91,803.97
METER DEPOSITS	ELECTRIC	1,500.00
CAMPGROUND RECEIPTS	FEES	240.00
PERMITS	BUILDING	116.49
CHARGE FOR SERVICES	WATER-CHARGE FOR SERVICES	71.23
BUILDING RENTALS	NICHOLS HALL	145.00
BUILDING RENTALS	BUILDING RENTAL DEPOSITS	1,550.00
CD INTEREST	CD INTEREST 301	1,561.65
BUILDING RENTALS	COMMUNITY CENTER	1,550.00
CHARGE FOR SERVICES	ELECTRIC-CHG FOR SERVICES	2,324.69
MISCELLANEOUS	REIMBURSEMENTS	1,485.47
METER DEPOSITS	WATER	80.00
MISCELLANEOUS	LIBRARY-COPIES, FINES, MISC.	3.76
CD INTEREST	CD INTEREST 101	45.20
CD INTEREST	CD INTEREST 378	213.69
CD INTEREST	CD INTEREST 602	73.97
CD INTEREST	CD INTEREST 603	78.10
COPIES	COPIES	.25
MISCELLANEOUS	BLUE CROSS/BLUE SHIELD PAYABLE	32.50
CD INTEREST	QUEEN CITY FED-CASH CD/FND 301	250,000.00
BUILDING RENTALS	SENIOR CENTER	90.00
SALE OF PROPERTY	SALE OF PROPERTY	20,695.75
MISCELLANEOUS	CHARITABLE GAMBLING PROCEEDS	104.52
Summary Totals:		<u>373,766.24</u>

Check Issue Date(s): 10/11/2008 - 10/24/2008

Per	Date	Check No	Vendor No	Payee	Check GL Acct	Amount
10/08	10/13/2008	137100	130011	MOUNTAIN IRON POSTMASTER	602-20200	331.53
10/08	10/21/2008	137101	10056	A T & T MOBILITY	101-20200	.16
10/08	10/21/2008	137102	10008	AIRGAS NORTH CENTRAL	101-20200	127.80
10/08	10/21/2008	137103	10021	ARROWHEAD LIBRARY SYSTEM	101-20200	252.50
10/08	10/21/2008	137104	1061	BARBARA JOHNSON	604-20200	114.91
10/08	10/21/2008	137105	1056	BEVERY G. JOHNSON	604-20200	104.78
10/08	10/21/2008	137106	20014	BORDER STATES ELECTRIC SUPPLY	604-20200	8,167.26
10/08	10/21/2008	137107	220003	CITY OF VIRGINIA	101-20200	300.00
10/08	10/21/2008	137108	30011	CONVEYOR BELT SERVICE INC	101-20200	37.28
10/08	10/21/2008	137109	30059	CVAR, THOMAS	101-20200	370.57
10/08	10/21/2008	137110	1055	EMIL OR JUNE KORPELA	604-20200	102.96
10/08	10/21/2008	137111	500012	ERA LABORATORIES INC	601-20200	443.60
10/08	10/21/2008	137112	60038	FLEET SERVICES	604-20200	6,349.55
10/08	10/21/2008	137113	70029	GUARDIAN PEST CONTROL INC	101-20200	70.50
10/08	10/21/2008	137114	70009	GULBRANSON EXCAVATING CO	604-20200	2,390.00
10/08	10/21/2008	137115	80021	H R DIRECT	101-20200	68.75
10/08	10/21/2008	137116	80022	HAWKINS INC	602-20200	1,271.44
10/08	10/21/2008	137117	80001	HILLYARD/HUTCHINSON	101-20200	711.53
10/08	10/21/2008	137118	80010	HOMETOWN ELECTRIC	301-20200	835.27
10/08	10/21/2008	137119	1051	INGRID SCHUTTE	604-20200	143.17
10/08	10/21/2008	137120	90015	IRON RANGE TOURISM BUREAU	101-20200	1,685.00
10/08	10/21/2008	137121	1059	JASON MCCALL	604-20200	187.32
10/08	10/21/2008	137122	1058	JASON STOWELL	604-20200	84.10
10/08	10/21/2008	137123	1066	JEAN SPECHT	101-20200	200.00
10/08	10/21/2008	137124	1065	JOAN MCGREGOR	101-20200	100.00
10/08	10/21/2008	137125	1053	KATHRYN GRITZMACHER	604-20200	219.83
10/08	10/21/2008	137126	1063	KELLY SATHER	101-20200	100.00
10/08	10/21/2008	137127	1052	KELSEY OR PHILLIP SMITH	604-20200	321.91
10/08	10/21/2008	137128	120006	L & M SUPPLY	101-20200	1,134.78
10/08	10/21/2008	137129	120011	LABOR AND INDUSTRY	101-20200	30.00
10/08	10/21/2008	137130	120008	LEHMAN FABRICATING INC	101-20200	37.00
10/08	10/21/2008	137131	120014	LUNDGREN MOTORS	301-20200	21,482.32
10/08	10/21/2008	137132	1054	MALITA SPEARS	604-20200	414.02
10/08	10/21/2008	137133	1049	MARION GIRU	301-20200	6,017.50
10/08	10/21/2008	137134	130004	MESABI DAILY NEWS	101-20200	1,079.99
10/08	10/21/2008	137135	130006	MESABI HUMANE SOCIETY	101-20200	2,000.00
10/08	10/21/2008	137136	130135	MINNCOR INDUSTRIES	101-20200	127.41
10/08	10/21/2008	137137	130008	MINNESOTA MUNICIPAL UTILITIES	604-20200	406.17
10/08	10/21/2008	137138	130009	MINNESOTA POWER	604-20200	47,634.19
10/08	10/21/2008	137139	130010	MINNESOTA UC FUND	101-20200	118.35
10/08	10/21/2008	137140	120007	MOTION INDUSTRIES INC	101-20200	35.86
10/08	10/21/2008	137141	130015	MOUNTAIN IRON PUBLIC UTILITIES	603-20200	12,798.81
10/08	10/21/2008	137142	140004	NORTHERN ENGINE & SUPPLY INC	602-20200	27.54
10/08	10/21/2008	137143	150016	OFFICE OF SECRETARY OF STATE	101-20200	40.00
10/08	10/21/2008	137144	150014	ONE CALL CONCEPTS INC	604-20200	63.80
10/08	10/21/2008	137145	1064	PATTI SMITH	101-20200	100.00
10/08	10/21/2008	137146	1060	PATTY BAUER	604-20200	143.74
10/08	10/21/2008	137147	160057	PHIL'S GARAGE DOOR SERVICE	101-20200	365.80
10/08	10/21/2008	137148	160032	PORTABLE JOHN	101-20200	490.82
10/08	10/21/2008	137149	170001	QWEST	101-20200	472.79
10/08	10/21/2008	137150	20015	ROBERT BROWN	101-20200	81.90
10/08	10/21/2008	137151	180053	RUSSO CONSULTING	101-20200	240.00
10/08	10/21/2008	137152	1062	SAINT LOUIS COUNTY	101-20200	200.00
10/08	10/21/2008	137153	6006	SAINT LOUIS COUNTY	604-20200	330.51
10/08	10/21/2008	137154	1057	SIIRI GILNESS	604-20200	100.46
10/08	10/21/2008	137155	190004	SKUBIC BROS INC	603-20200	1,235.03
10/08	10/21/2008	137156	190024	ST LOUIS CO SHERIFF LITMAN	101-20200	35,833.00

Check Issue Date(s): 10/11/2008 - 10/24/2008

Per	Date	Check No	Vendor No	Payee	Check GL Acct	Amount
10/08	10/21/2008	137157	190016	ST LOUIS COUNTY AUDITOR	101-20200	30,744.00
10/08	10/21/2008	137158	190033	STAR TRIBUNE	101-20200	358.80
10/08	10/21/2008	137159	200028	TRI CITIES BIOSOLIDS DISPOSAL	602-20200	5,435.00
10/08	10/21/2008	137160	200036	TRITEC OF MINNESOTA INC	101-20200	32.59
10/08	10/21/2008	137161	210010	ULLAND BROTHERS INC	101-20200	35,513.01
10/08	10/21/2008	137162	210006	UTILITY SYSTEMS OF AMERICA INC	104-20200	85,993.83
10/08	10/21/2008	137163	220020	VISA OR AMERICAN BANK CC PMT	101-20200	6,056.36
10/08	10/21/2008	137164	230005	WESCO DISTRIBUTION INC	604-20200	1,626.76
10/08	10/21/2008	137165	1050	WILLIAM SUIHKONEN	604-20200	94.47
10/08	10/21/2008	137166	230028	WISCONSIN ENERGY CONSERVATION	604-20200	355.00
10/08	10/21/2008	137167	260005	ZEP MANUFACTURING COMPANY	101-20200	271.99
10/08	10/22/2008	137168	130039	MINNESOTA DEPT OF COMMERCE	604-20200	345.94

Totals:

324,961.26

Payroll-PP Ending 10/17/08

89,803.03

TOTAL EXPENDITURES

\$414,764.29

City of Mountain Iron

Identity Theft Prevention Program

Effective beginning October 20, 2008

I. PROGRAM ADOPTION

The City of Mountain Iron ("Utility") developed this Identity Theft Prevention Program ("Program") pursuant to the Federal Trade Commission's Red Flags Rule ("Rule"), which implements Section 114 of the Fair and Accurate Credit Transactions Act of 2003. 16 C. F. R. § 681.2. This Program was developed with oversight and approval of the City Council. After consideration of the size and complexity of the Utility's operations and account systems, and the nature and scope of the Utility's activities, the City Council determined that this Program was appropriate for the City of Mountain Iron, and therefore approved this Program on October 20, 2008.

II. PROGRAM PURPOSE AND DEFINITIONS

A. Fulfilling requirements of the Red Flags Rule

Under the Red Flag Rule, every financial institution and creditor is required to establish an "Identity Theft Prevention Program" tailored to its size, complexity and the nature of its operation. Each program must contain reasonable policies and procedures to:

1. Identify relevant Red Flags for new and existing covered accounts and incorporate those Red Flags into the Program;
2. Detect Red Flags that have been incorporated into the Program;
3. Respond appropriately to any Red Flags that are detected to prevent and mitigate Identity Theft; and
4. Ensure the Program is updated periodically, to reflect changes in risks to customers or to the safety and soundness of the creditor from Identity Theft.

B. Red Flags Rule definitions used in this Program

The Red Flags Rule defines "Identity Theft" as "fraud committed using the identifying information of another person" and a "Red Flag" as a pattern, practice, or specific activity that indicates the possible existence of Identity Theft.

According to the Rule, a municipal utility is a creditor subject to the Rule requirements. The Rule defines creditors "to include finance companies, automobile dealers, mortgage brokers, utility companies, and telecommunications companies. Where non-profit and government entities defer payment for goods or services, they, too, are to be considered creditors."

All the Utility's accounts that are individual utility service accounts held by customers of the utility whether residential, commercial or industrial are covered by the Rule. Under the Rule, a "covered account" is:

1. Any account the Utility offers or maintains primarily for personal, family or household purposes, that involves multiple payments or transactions; and

2. Any other account the Utility offers or maintains for which there is a reasonably foreseeable risk to customers or to the safety and soundness of the Utility from Identity Theft.

“Identifying information” is defined under the Rule as “any name or number that may be used, alone or in conjunction with any other information, to identify a specific person,” including: name, address, telephone number, social security number, date of birth, government issued driver’s license or identification number, alien registration number, government passport number, employer or taxpayer identification number, unique electronic identification number, computer’s Internet Protocol address, or routing code.

III. IDENTIFICATION OF RED FLAGS.

In order to identify relevant Red Flags, the Utility considers the types of accounts that it offers and maintains, the methods it provides to open its accounts, the methods it provides to access its accounts, and its previous experiences with Identity Theft. The Utility identifies the following red flags, in each of the listed categories:

A. Suspicious Documents

Red Flags

1. Document with information that is not consistent with existing customer information (such as if a person’s signature on a check appears forged); and
2. Application for service that appears to have been altered or forged.

B. Suspicious Personal Identifying Information

Red Flags

1. Identifying information presented that is the same as information shown on other applications that were found to be fraudulent;
2. Identifying information presented that is consistent with fraudulent activity (such as an invalid phone number or fictitious billing address);
3. An address or phone number presented that is the same as that of another person;
4. A person fails to provide complete personal identifying information on an application when reminded to do so (however, by law social security numbers must not be required); and
5. A person’s identifying information is not consistent with the information that is on file for the customer.

C. Suspicious Account Activity or Unusual Use of Account

Red Flags

1. Change of address for an account followed by a request to change the account holder's name;
2. Payments stop on an otherwise consistently up-to-date account;
3. Account used in a way that is not consistent with prior use (example: very high activity);
4. Mail sent to the account holder is repeatedly returned as undeliverable;
5. Notice to the Utility that a customer is not receiving mail sent by the Utility;
6. Notice to the Utility that an account has unauthorized activity;
7. Breach in the Utility's computer system security; and
8. Unauthorized access to or use of customer account information.

D. Alerts from Others

Red Flag

1. Notice to the Utility from a customer, identity theft victim, law enforcement or other person that it has opened or is maintaining a fraudulent account for a person engaged in Identity Theft.

IV. DETECTING RED FLAGS.

A. New Accounts

In order to detect any of the Red Flags identified above associated with the opening of a **new account**, Utility personnel will take the following steps to obtain and verify the identity of the person opening the account:

Detect

1. Require certain identifying information such as name, date of birth, residential or business address, principal place of business for an entity, driver's license or other identification;
2. Verify the customer's identity (for instance, review a driver's license or other identification card);
3. Review documentation showing the existence of a business entity; and
4. Independently contact the customer.

B. Existing Accounts

In order to detect any of the Red Flags identified above for an **existing account**, Utility personnel will take the following steps to monitor transactions with an account:

Detect

1. Verify the identification of customers if they request information (in person, via telephone, via facsimile, via email);
2. Verify the validity of requests to change billing addresses; and
3. Verify changes in banking information given for billing and payment purposes.

V. PREVENTING AND MITIGATING IDENTITY THEFT

In the event Utility personnel detect any identified Red Flags, such personnel shall take one or more of the following steps, depending on the degree of risk posed by the Red Flag:

Prevent and Mitigate

1. Continue to monitor an account for evidence of Identity Theft;
2. Contact the customer;
3. Change any passwords or other security devices that permit access to accounts;
4. Not open a new account;
5. Close an existing account;
6. Notify the Program Administrator for determination of the appropriate step(s) to take;
7. Notify law enforcement; or
8. Determine that no response is warranted under the particular circumstances.

Protect customer identifying information

In order to further prevent the likelihood of identity theft occurring with respect to Utility accounts, the Utility will take the following steps with respect to its internal operating procedures to protect customer identifying information:

1. Ensure that its website is secure or provide clear notice that the website is not secure;
2. Ensure complete and secure destruction of paper documents and computer files containing customer information;
3. Ensure that office computers are password protected
4. Keep offices clear of papers containing customer information;
5. Ensure computer virus protection is up to date; and
6. Require and keep only the kinds of customer information that are necessary for utility purposes.

VI. PROGRAM UPDATES

This Program will be periodically reviewed and updated to reflect changes in risks to customers and the soundness of the Utility from Identity Theft. At least every 6 months, the Program Administrator will consider the Utility's experiences with Identity Theft situation, changes in Identity Theft methods, changes in Identity Theft detection and prevention methods, changes in types of accounts the Utility maintains and changes in the Utility's business arrangements with other entities. After considering these factors, the Program Administrator will determine whether changes to the Program, including the listing of Red Flags, are warranted. If warranted, the Program Administrator will present the City Council with his or her recommended changes and the City Council will make a determination of whether to accept, modify or reject those changes to the Program.

VII. PROGRAM ADMINISTRATION.

A. Oversight

Responsibility for developing, implementing and updating this Program lies with an Identity Theft Committee for the Utility. The Committee is headed by a Program Administrator who may be the head of the Utility or his or her appointee. Two or more other individuals appointed by the head of the Utility or the Program Administrator comprise the remainder of the committee membership. The Program Administrator will be responsible for the Program administration, for ensuring appropriate training of Utility staff on the Program, for reviewing any staff reports regarding the detection of Red Flags and the steps for preventing and mitigating Identity Theft, determining which steps of prevention and mitigation should be taken in particular circumstances and considering periodic changes to the Program.

B. Staff Training and Reports

Utility staff responsible for implementing the Program shall be trained either by or under the direction of the Program Administrator in the detection of Red Flags, and the responsive steps to be taken when a Red Flag is detected.

C. Service Provider Arrangements

In the event the Utility engages a service provider to perform an activity in connection with one or more accounts, the Utility will take the following steps to ensure the service provider performs its activity in accordance with reasonable policies and procedures designed to detect, prevent, and mitigate the risk of Identity Theft.

1. Require, by contract, that service providers have such policies and procedures in place; and
2. Require, by contract, that service providers review the Utility's Program and report any Red Flags to the Program Administrator.

D. Specific Program Elements and Confidentiality

For the effectiveness of Identity Theft prevention Programs, the Red Flag Rule envisions a degree of confidentiality regarding the Utility's specific practices relating to Identity Theft detection, prevention and mitigation. Therefore, under this Program, knowledge of such specific practices are to be limited to the Identity Theft Committee and those employees who need to know them for purposes of preventing Identity Theft. Because this Program is to be adopted by a public body and thus publicly available, it would be counterproductive to list these specific practices here. Therefore, only the Program's general red flag detection, implementation and prevention practices are listed in this document.

Minnesota Municipal Utilities Association
AMENDMENT TO SERVICES AGREEMENT
Safety Management Program

Contract Date: August 27, 2008

Contract Number: 20-2009

The services agreement entered into between Minnesota Municipal Utilities Association (MMUA) and Mountain Iron Public Utilities (Mountain Iron), dated August 28, 2007, contract number 20-2008, is amended as follows:

PART II, Section 1.

1. DURATION: This Agreement shall remain in force from October 1, 2008 until September 30, 2009 (the "expiration date").

PART III, Section 1.

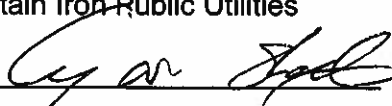
1. COMPENSATION: For the services covered by this Agreement, Mountain Iron shall pay MMUA an annual fee of eight thousand one hundred fifty dollars and 00 cents (\$8,150.00) for the 2008-09 annual period. Such compensation shall be due and payable according to the selected payment terms below.


Payment terms for the fee agreed to above shall be based on one of the following options (select one):

- Annual Payment (\$8,150.00)
- Quarterly Payments (\$2,037.50 each)

For any term of less than twelve full calendar months, the fee shall be a portion of the annual fee, pro-rated based on the number of calendar months or partial calendar months in which the services were provided as a percentage of twelve (12).

The parties hereby accept the terms of the Agreement as modified.

Mountain Iron Public Utilities
By 
Title Mayor
Date 10-20-08
Purchase Order # _____

Minnesota Municipal Utilities Association
By 
Title Executive Director
Date August 27, 2008

Minnesota Municipal Utilities Association
Safety Management Program
Northeast Group Fee Calculation
 October 1, 2008 - September 30, 2009

City	Population	2008-09 Annual Charge	2008-09 Quarterly Charge	2007-08 Annual Charge	Difference	Total 2008-09 with JTS
Aitkin	2,127	\$12,150.00	\$3,037.50	\$11,400.00	\$750.00	\$12,150.00
Buhl	983	\$6,650.00	\$1,662.50	\$5,900.00	\$750.00	\$6,650.00
Grand Marais	1,419	\$12,150.00	\$3,037.50	\$11,400.00	\$750.00	\$13,800.00
Hibbing	16,283	\$46,000.00	\$11,500.00	\$18,400.00	\$27,600.00	\$46,000.00
Keewatin	1,172	\$6,650.00	\$1,662.50	\$5,900.00	\$750.00	\$7,750.00
Moose Lake	2,445	\$12,150.00	\$3,037.50	\$11,400.00	\$750.00	\$14,900.00
Mora	3,568	\$14,150.00	\$3,537.50	\$13,400.00	\$750.00	\$15,800.00
Mountain Iron	2,843	\$8,150.00	\$2,037.50	\$7,400.00	\$750.00	\$9,800.00
Nashwauk	949	\$6,650.00	\$1,662.50	\$5,900.00	\$750.00	\$6,650.00
Princeton	4,503	\$8,150.00	\$2,037.50	\$7,228.27	\$921.73	\$10,900.00
Princeton (city)	4,503	\$8,150.00	\$2,037.50	\$7,228.27	\$921.73	\$8,150.00
Totals:		\$141,000.00	\$35,250.00	\$91,100.00	\$33,600.00	\$152,550.00

Annual JTS (Electric)	per lineman	2008-09	2007-08
Aitkin	0	\$0.00	\$0.00
Buhl	0	\$0.00	\$0.00
Grand Marais	3	\$1,650.00	\$1,500.00
Keewatin	2	\$1,100.00	\$0.00
Moose Lake	5	\$2,750.00	\$2,000.00
Mora	3	\$1,650.00	\$1,500.00
Mountain Iron	3	\$1,650.00	\$1,500.00
Nashwauk	0	\$0.00	\$1,500.00
Princeton	5	\$2,750.00	\$2,500.00
Totals:	21	\$8,800.00	\$8,000.00

Please notify Rita Kelly of changes to your city.
 Call 763-746-0704; fax 763-551-0459 or e-mail to rkelly@mmuas.org.

COUNCIL LETTER 110908-III

ADMINISTRATION

PUBLIC HEARINGS

DATE: October 29, 2008
FROM: Craig J. Wainio
City Administrator

These three public hearings are part of the assessment process for the Park Ridge Drive project, the Unity Drive Project and the Unity Drive graveling project. The affected property owners have been notified of the public hearing.

Each project required its own separate public hearing.

Upon completion of the public hearings it is recommended that the City Council adopt Resolutions Number 52-08, 53-08 and 54-08 Adopting Assessments.

PARK RIDGE DRIVE				PROJECT				COST
NAME	SEC./ BLOCK	DESC./ LOT	FRONT FOOTAGE	PARCEL CODE	COST	ASSESSMENT RATE	ASSESSMENT AMOUNT	PER FOOT
BABICH STEVE D	11	SE/SE	300.09	175-0071-00883	\$ 26,941.17	10.00%	\$ 2,694.12	\$ 8.98
EDA	OUT	B	42.49	175-0071-00880	\$ 3,814.62	10.00%	\$ 381.46	\$ 8.98
EICHORNS	2	1&2	360	175-0071-00880	\$ 32,319.71	10.00%	\$ 3,231.97	\$ 8.98
EDA	2	3 to 7	758	175-0071-00880	\$ 68,050.95	10.00%	\$ 6,805.09	\$ 8.98
HERZOG JOYCE A	14	SE/SE	370.13	175-0071-00885	\$ 33,229.15	10.00%	\$ 3,322.92	\$ 8.98
LAKE COUNTRY POWER	1	6 to 9 B	1088.29	175-0071-00880	\$ 97,703.39	10.00%	\$ 9,770.34	\$ 8.98
			2919		\$ 262,059.00		\$ 26,205.90	

Unity Drive from Cty 109 to Diamond									
NAME	SEC./ BLOCK	DESC./ LOT	FRONT FOOTAGE	PARCEL CODE	PROJECT COST	ASSESSMENT RATE	ASSESSMENT AMOUNT	COST PER FOOT	
Emil Johanson	11	SW/SE	461	175-0071-00920	\$ 36,379.93	10.00%	\$	3,637.99	\$ 7.89
Five Star Living	11	SW/SE	441.94	175-0071-00906	\$ 34,875.81	10.00%	\$	3,487.58	\$ 7.89
FELTEN DAVID & NICOLE	11	SW/SE	320	175-0071-00902	\$ 25,252.88	10.00%	\$	2,525.29	\$ 7.89
Kevin Engman	11	SE/SE	1437.22	175-0071-01580	\$ 113,418.57	10.00%	\$	11,341.86	\$ 7.89
FALKOWSKI FRANK T	14	NE/NE	312	175-0071-01473	\$ 24,621.56	10.00%	\$	2,462.16	\$ 7.89
VAUDRIN ROGER & ELIZABETH	14	NE/NE	167	175-0071-01470	\$ 13,178.85	10.00%	\$	1,317.88	\$ 7.89
WALDORF RAYMOND J & SHELLEY M	14	NE/NE	258	175-0071-01545	\$ 20,360.13	10.00%	\$	2,036.01	\$ 7.89
MACK SEAN & LURAE	14	NE/NE	309	175-0071-01546	\$ 24,384.81	10.00%	\$	2,438.48	\$ 7.89
MACK SEAN & LURAE	14	NE/NE	391.22	175-0071-01482	\$ 30,873.22	10.00%	\$	3,087.32	\$ 7.89
FINK CHRIS & YVONNE	1	2	160.1	175-0063-00050	\$ 12,634.33	10.00%	\$	1,263.43	\$ 7.89
City of Mountain Iron	A		220.82	175-0063-00280	\$ 17,426.07	10.00%	\$	1,742.61	\$ 7.89
FRIDGEN MICHAEL J & KATHERINE A	1	3	140	175-0063-00150	\$ 11,048.13	10.00%	\$	1,104.81	\$ 7.89
YANIEF GREGORY & LISA	10	3	120.27	175-0063-00240	\$ 9,491.14	10.00%	\$	949.11	\$ 7.89
WAINIO CRAIG J & TARA M	1	4	127.14	175-0063-00250	\$ 10,033.28	10.00%	\$	1,003.33	\$ 7.89
KLIMA AARON D & AMY L	2	4	127.14	175-0063-00260	\$ 10,033.28	10.00%	\$	1,003.33	\$ 7.89
			4992.85		\$ 394,012.00		\$	39,401.20	

Unity Drive Extension				PROJECT				COST
NAME	SEC./ BLOCK	DESC./ LOT	FRONT FOOTAGE	PARCEL CODE	COST	ASSESSMENT RATE	ASSESSMENT AMOUNT	PER FOOT
Lenorad Resokoski	11	SW/SE	250	175-0071-00920	\$ 8,897.00	10.00%	\$ 444.85	\$ 1.78
ISD 712	11	SW/SE	250	175-0071-00906	\$ 4,448.50	10.00%	\$ 444.85	\$ 1.78
			500		\$ 8,897.00		\$ 889.70	

COUNCIL LETTER 110308-IVA1

MAYOR SKALKO

COW MEETINGS

DATE: October 29, 2008

FROM: Gary Skalko
Mayor

Craig J. Wainio
City Administrator

Mayor Skalko requested this item be placed on the agenda with this background information:

COW Meetings regarding:

1. Meet with Planning and Zoning members and staff regarding discussion of sight survey ordinance.
2. Meet to discuss input into 2009 City budget.

I suggest we have back-to-back meetings on these two matters; say the week of November 17th (1st meeting at 5:30PM – allow one hour for it)

To The Members of The Mt. Iron Fire Department:

I respectfully request a six month leave of absence from the Mt. Iron Fire Department. I am working more often at Meds-1 Ambulance Service and am finding it difficult to continue to be traveling back and forth to be both a paramedic and a firefighter. I will be moving to Grand Rapids to put forth more effort in becoming a better paramedic. I would like the opportunity to come back if the move does not work out for me. I appreciate all that everyone has done for me and wish everyone the best of luck in the event I do not return.

Respectfully,

A handwritten signature in black ink that reads "Devin L. West". The signature is written in a cursive style with a large, looping flourish at the end.

Devin L. West



Saint Louis County

County Auditor – 100 North 5th Avenue West, Room 214 - Duluth, MN 55802-1293
Phone: (218) 726-2380 Phone – Virginia: (218) 749-7104 Fax: (218) 725-5060

Donald Dicklich
St. Louis County Auditor

28-Oct-08

Craig Wainio Administrator
City of Mt Iron
8586 Enterprise Drive South
Mountain Iron MN 55768

Re: Published notice tax rate calculation

Dear Craig:

Enclosed you will find your Published Notice Tax Rate Calculation

If you have questions please call Rick at (218) 725-5125. Thank you for your continued cooperation.

Sincerely Yours
Donald Dicklich
St Louis County Auditor

A handwritten signature in cursive script that reads "Brandon Larson".

by Brandon Larson
Deputy

PUBLISHED NOTICE TAX RATE CALCULATION FOR MT IRON

1. Payable 2008 net tax capacity levy	980,956
2. Payable 2009 net tax capacity levy	968,001
3. Fiscal disparity distribution tax	
a. Payable 2008	46,475
b. Payable 2009	51,917
4. Taxable net tax capacity	
a. Payable 2008	1,743,271
b. Payable 2009	1,852,404
5. Disparity aid	
a. Payable 2008	0
b. Payable 2009	0
6. Determination of the payable 2008 tax rate	
a. Adjusted net tax capacity levy (1-3a)	934481
b. Initial Local tax rate (6a/4a)	0.536050333
c. Disparity reduction aid rate (5a/4a)	0
d. Payable 2008 tax rate (6b-6c)	0.536050333
7. Determination of the payable 2009 no levy increase tax rate	
a. Adjusted net tax capacity levy (1-3a)	934481
b. Initial Local tax rate (7 a/4b)	0.504469327
c. Disparity reduction aid rate (5b/4b)	0
d. Payable 2009 no levy increase tax rate (7b-7c)	0.504469327
8. Determination of the payable 2009 proposed tax rate	
a. Adjusted net tax capacity levy (2-3b)	916084
b. Initial local tax rate (8a/4b)	0.494537909
c. Disparity reduction aid rate (5b/4b)	0
d. Payable 2009 proposed tax rate (8b-8c)	0.494537909

Affidavit of Publication

STATE OF MINNESOTA)

)ss

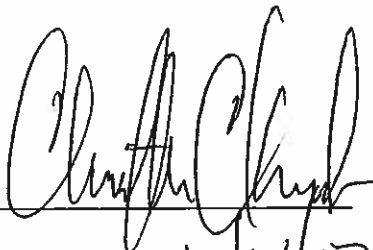
COUNTY OF ST. LOUIS)

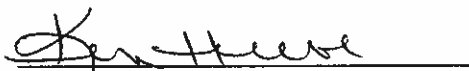
Chris Knight, being duly sworn, on oath says that he/she is the publisher or authorized agent and employee of the publisher of the newspaper known as Mesabi Daily News, and has full knowledge of the facts which are stated below:

(A) The newspaper has complied with all of the requirements constituting qualification as a qualified newspaper, as provided by Minnesota Statute 331A.02, 331A.07, and other applicable laws, as amended.

(B) The printed **City of Mt. Iron, Calendar Parking**, which is attached was cut from the columns of said newspaper, and was printed and published once each day; for 2 days; it was first published on **Sunday, the 23rd day of December, 2007**, and was thereafter printed and published on **Sunday, the 30th day of December, 2007**.

BY:


12/31/07



Subscribed and sworn to before me on
This 31st day of December, 2007
Notary Public

**CALENDAR PARKING
CITY OF MOUNTAIN IRON**

Calendar parking in Mountain Iron is in effect from November 1st through April 1st pursuant to the City of Mountain Iron, Code of Ordinances, Chapter 75. During calendar parking any Sheriff Deputy may remove a vehicle from a street to a garage or other place of safety when the vehicle is left unattended for a period of 48 hours and constitutes an obstruction to traffic or hinders snow removal or street improvement or maintenance operations. A complete copy of Chapter 75 is available at the City Hall. Parking begins at 6:00 p.m. for the following day. Odd days parking are on the odd numbered side of the street.

By Order of the Sheriff's Department
Mountain Iron Office

www.mtniron.com

100616



BENCHMARK ENGINEERING, INC.

CIVIL AND ENVIRONMENTAL ENGINEERING • PLANNING
MINING • LAND SURVEYING • LAND DATA BASE MAPPING

8878 Main Street • P.O. Box 261
Mt. Iron, MN 55768-0261
tel: 218-735-8914 • fax: 218-735-8923
email: info@bm-eng.com

October 24, 2008

Mr. Craig Wainio
City of Mountain Iron
8586 Enterprise Drive South
Mountain Iron, MN 55768

Re: Release of Retainage on Locomotive Park Fencing Project
Project No. MI07-18

Dear Mr. Wainio,

The construction on the Locomotive Park Fencing Project No. MI07-18 has been satisfactorily completed. Benchmark Engineering, Inc. is recommending release of the retainage on this project.

If you have any questions please feel free to contact me.

Sincerely,
Benchmark Engineering, Inc.

Rodney Flannigan, P.L.S.

RF:lak
Enclosure

RECOMMENDATION OF PAYMENT

No. 2

Owners Project No: _____

Engineer's Project No: MI07-18

Project: Locomotive Park Fence Construction

CONTRACTOR: Mesabi Bituminous, Inc.

For Period Ending: October 23, 2008

To: City of Mountain Iron, MN

Owner

Attached hereto is the CONTRACTOR's Application for Payment for Work accomplished under the Contract through the date indicated above. The application meets the requirements of the Contract Documents for the payment or work completed as of the date of this Application.

In accordance with the Contract the undersigned recommends payment to the CONTRACTOR of the amount due as shown below.

BENCHMARK ENGINEERING, INC.

Dated October 23, 2008

By _____

STATEMENT OF WORK

Original Contract Price	\$27,570.00	Work & Materials to Date	\$26,510.00
Net Change Orders	\$0.00	Amount Retained (5%)	\$0.00
Current Contract Price	\$27,570.00	Subtotal	<u>\$26,510.00</u>
		Previous Payments	\$25,184.50
		Amount Due This Payment	<u><u>\$1,325.50</u></u>

CHANGE ORDER

Order No. 1 - FINAL

Date: 9/5/08

NAME OF PROJECT/PROJECT NO: 2008 Bituminous Overlay / MI08-9
OWNER: City of Mountain Iron
CONTRACTOR: Ulland Brothers, Inc.
P.O. Box 340, Cloquet, MN 55720
ENGINEER: Benchmark Engineering, Inc.

Reason for Change Order:



This final compensating change order is required to set the contract amount equal to the actual project cost. The decrease in cost is due to minor final contract quantity adjustments.

The following changes are hereby made to the CONTRACT DOCUMENTS:

The contract amount is decreased by **\$5,477.02**.

Change to CONTRACT PRICE:

Original CONTRACT PRICE	\$ <u>112,734.65</u>
Current CONTRACT PRICE adjusted by previous CHANGE ORDERS	\$ <u>112,734.65</u>
The CONTRACT PRICE due to this CHANGE ORDER will be <u>decreased</u> by:	\$ <u>5,477.02</u>
The new CONTRACT PRICE including this CHANGE ORDER will be:	\$ <u>107,257.63</u>

Recommended by:	<u></u> Engineer (Authorized Signature)	<u>9-5-2008</u> Date:
Approved by:	_____ Owner (Authorized Signature)	_____ Date:
Accepted by:	<u></u> Contractor (Authorized Signature)	<u>10.20.2008</u> Date:



CIVIL AND ENVIRONMENTAL ENGINEERING • PLANNING
MINING • LAND SURVEYING • LAND DATA BASE MAPPING

8878 Main Street • P.O. Box 261
Mt. Iron, MN 55768-0261
tel: 218-735-8914 • fax: 218-735-8923
email: info@bm-eng.com

October 27, 2008

Mr. Craig Wainio, City Administrator
City of Mountain Iron
8586 Enterprise Drive South
Mountain Iron, MN 55768

Re: City of Mountain Iron, MN
2008 Bituminous Overlay
Project No. MI08-9

Dear Mr. Wainio

Enclosed please find Final Pay Request No. 3 for the City of Mountain Iron 2008 Bituminous Overlay Project in the amount of **\$5,362.88**. Please refer to the enclosed pay request breakdown for a final summary of items completed.

Also enclosed for approval is final compensating change order #1 that decreases the final project cost by \$5,477.02. The change order is due to minor final contract quantity adjustments. Please sign and date all three copies of the change order and return two fully executed copies to our office.

In addition, the IC-134 forms have been provided by the Contractor and are included for your records. Since all work has been completed and all the final paperwork is in order, it is recommended that the City Council approved the final change order and then the final pay request for the above referenced project.

Please feel free to contact our office should you have any questions or concerns.

Sincerely,
Benchmark Engineering, Inc.

Eric E. Fallstrom, P.E.

Enclosures

Pc: Mr. Dan Klun, Ulland Brothers, Inc.

RECOMMENDATION OF PAYMENT

No. 3-FINAL

Owner's Project No.: _____

Engineer's Project No.: MI08-9

Project: 2008 Bituminous Overlay

CONTRACTOR: Ulland Brothers, Inc., P.O. Box 340, Cloquet, MN 55720

For Period Ending: September 5, 2008

To City of Mountain Iron
Owner

Attached hereto is the CONTRACTOR's Application for Payment for Work accomplished under the Contract through the date indicated above. The application meets the requirements of the Contract Documents for the payment or work completed as of the date of this Application.

In accordance with the Contract the undersigned recommends payment to the CONTRACTOR of the amount due as shown below.

BENCHMARK ENGINEERING, INC.

Dated September 5, 2008

By 

STATEMENT OF WORK

Original Contract Price	\$ <u>112,734.65</u>	Work & Materials to Date	\$ <u>107,257.63</u>
Net Change Orders	\$ <u>5,477.02</u>	Amount Retained	\$ <u>0.00</u>
Current Contract Price	\$ <u>107,257.63</u>	Subtotal	\$ <u>107,257.63</u>
		Previous Payments	\$ <u>101,894.75</u>
		Amount Due this Payment	\$ <u>5,362.88</u>



September 5, 2008

PAY REQUEST NO. 3 - FINAL
2008 BITUMINOUS OVERLAY

PROJECT NO.: MI08-9
CITY OF MOUNTAIN IRON, MINNESOTA

CONTRACTOR: ULLAND BROTHERS, INC.

SPEC. NO.	ITEM DESCRIPTION	UNIT	PROJECT QUANTITIES	UNIT COST	QUANTITY TO DATE	TOTAL AMOUNT
2221.503	AGGREGATE SHOULDERING (CV), CLASS 1	CU. YD.	500.0	\$26.50	550.0	\$14,575.00
2350.501	TYPE LV5 WEARING COURSE MIXTURE (B)	TON	1,285.0	\$53.75	1,032.0	\$55,470.00
2350.502	TYPE LV4 NON-WEARING COURSE MIXTURE (B)	TON	430.0	\$51.00	551.0	\$28,101.00
2357.502	BITUMINOUS MATERIAL FOR TACK COAT	GALLON	1,490.0	\$1.65	800.0	\$1,320.00
2563.601	TRAFFIC CONTROL	LUMP SUM	1.0	\$325.00	1.0	\$325.00
2582.502	4" DOUBLE SOLID LINE YELLOW - EPOXY	LIN. FT.	5,280.0	\$0.70	5,095.0	\$3,566.50
2582.502	4" SOLID LINE WHITE - EPOXY	LIN. FT.	10,560.0	\$0.19	9,967.0	\$1,893.73
2582.502	4" DOUBLE SOLID LINE YELLOW - TEMPORARY	LIN. FT.		\$0.38	5,280.0	\$2,006.40

COMPLETED TO DATE: \$107,257.63
LESS RETAINAGE: \$0.00

SUBTOTAL PAY REQUEST #3: \$107,257.63
LESS PREVIOUS PAYMENTS: (\$101,894.75)

TOTAL PAY REQUEST #3: \$5,362.88

BENCHMARK ENGINEERING, INC.



CIVIL AND ENVIRONMENTAL ENGINEERING • PLANNING
MINING • LAND SURVEYING • LAND DATA BASE MAPPING

8878 Main Street ▪ P.O. Box 261
Mt. Iron, MN 55768-0261
tel: 218-735-8914 ▪ fax: 218-735-8923
email: info@bm-eng.com

October 27, 2008

Mr. Craig Wainio, City Administrator
City of Mountain Iron
8586 Enterprise Drive South
Mountain Iron, MN 55768

Re: City of Mountain Iron, MN
Mountain Iron RV Dump Station
Project No. MI08-37

Dear Mr. Wainio,

Enclosed please find final Pay Request No. 1 for the Mountain Iron RV Dump Station project in the amount of **\$7,000.00**, for approval at your next scheduled City Council meeting. All project work has been completed.

In addition, the IC-134 form has been provided by the Contractor and is included for your records.

If you have any questions or need additional information please do not hesitate to contact me.

Sincerely,
Benchmark Engineering, Inc.



Eric E. Fallstrom, P.E.

Enclosure

Pc: Mr. Cory Winger, C & C Winger Inc.

RECOMMENDATION OF PAYMENT

No. 1 - FINAL

Owner's Project No.: _____

Engineer's Project No.: MI08-37

Project: Mountain Iron RV Dump Station

CONTRACTOR: C & C Winger, Inc., 6872 Hwy 135 North, Embarrass, MN 55732

For Period Ending: October 27, 2008


To: City of Mountain Iron
Owner

Attached hereto is the CONTRACTOR's Application for Payment for Work accomplished under the Contract through the date indicated above. The application meets the requirements of the Contract Documents for the payment or work completed as of the date of this Application.

In accordance with the Contract the undersigned recommends payment to the CONTRACTOR of the amount due as shown below.

BENCHMARK ENGINEERING, INC.

Dated October 27, 2008

By 

STATEMENT OF WORK

Original Contract Price	\$ <u>7,000.00</u>	Work & Materials to Date	\$ <u>7,000.00</u>
Net Change Orders	\$ <u>0.00</u>	Amount Retained	\$ <u>0.00</u>
Current Contract Price	\$ <u>7,000.00</u>	Subtotal	\$ <u>7,000.00</u>
		Previous Payments	\$ <u>0.00</u>
		Amount Due this Payment	\$ <u>7,000.00</u>



CIVIL AND ENVIRONMENTAL ENGINEERING • PLANNING
MINING • LAND SURVEYING • LAND DATA BASE MAPPING

8878 Main Street • P.O. Box 261
Mt. Iron, MN 55768-0261
tel: 218-735-8914 • fax: 218-735-8923
email: info@bm-eng.com

October 27, 2008

Mr. Craig Wainio, City Administrator
City of Mountain Iron
8586 Enterprise Drive South
Mountain Iron, MN 55768

Re: City of Mountain Iron, MN
South Grove Park Sidewalk
Project No. MI08-36

Dear Mr. Wainio,

Enclosed please find final Pay Request No. 2 for the South Grove Park Sidewalk project in the amount of **\$1,039.05**, for approval at your next scheduled City Council meeting. Please refer to the enclosed pay request breakdown for a final summary of items completed.

In addition, the IC-134 form has been provided by the Contractor and is included for your records.

If you have any questions or need additional information please do not hesitate to contact me.

Sincerely,
Benchmark Engineering, Inc.



Eric E. Fallstrom, P.E.

Enclosure

Pc: Mr. Cory Winger, C & C Winger Inc.

RECOMMENDATION OF PAYMENT

No. 2 - FINAL

Owner's Project No.: _____

Engineer's Project No.: MI08-36

Project: South Grove Park Sidewalk

CONTRACTOR: C & C Winger, Inc., 6872 Hwy 135 North, Embarrass, MN 55732

For Period Ending: October 27, 2008

To: City of Mountain Iron
Owner

Attached hereto is the CONTRACTOR's Application for Payment for Work accomplished under the Contract through the date indicated above. The application meets the requirements of the Contract Documents for the payment or work completed as of the date of this Application.

In accordance with the Contract the undersigned recommends payment to the CONTRACTOR of the amount due as shown below.

BENCHMARK ENGINEERING, INC.

Dated October 27, 2008

By  _____

STATEMENT OF WORK

Original Contract Price	\$ <u>11,781.00</u>	Work & Materials to Date	\$ <u>11,281.00</u>
Net Change Orders	\$ <u>0.00</u>	Amount Retained	\$ <u>0.00</u>
Current Contract Price	\$ <u>11,781.00</u>	Subtotal	\$ <u>11,281.00</u>
		Previous Payments	\$ <u>10,241.95</u>
		Amount Due this Payment	\$ <u>1,039.05</u>

October 27, 2008



PAY REQUEST NO. 2 - FINAL
SOUTH GROVE PARK SIDEWALK
PROJECT NO.: MI08-36
CITY OF MOUNTAIN IRON, MINNESOTA

CONTRACTOR: C & C WINGER, INC.

SPEC NO.	ITEM DESCRIPTION	UNIT	PROJECT QUANTITY	UNIT COST	QUANTITY TO DATE	TOTAL AMOUNT
2105.501	COMMON EXCAVATION (PV)	CU. YD.	63.0	\$12.00	63.0	\$756.00
2211.503	AGGREGATE BASE (CV), CLASS 5	CU. YD.	27.0	\$25.00	27.0	\$675.00
2521.501	4" CONCRETE WALK	SQ. FT.	1,810.0	\$5.00	1,770.0	\$8,850.00
2531.618	TRUNCATED DOMES	SQ. FT.	8.0	\$37.50	0.0	\$0.00
2575.555	TURF ESTABLISHMENT	LUMP SUM	1.0	\$1,000.00	1.0	\$1,000.00

\$11,781.00

COMPLETED TO DATE: \$11,281.00
LESS RETAINAGE: \$0.00
SUBTOTAL PAY REQUEST #2: \$11,281.00
LESS PREVIOUS PAYMENTS: (\$10,241.95)

TOTAL PAY REQUEST #2: **\$1,039.05**


BENCHMARK ENGINEERING, INC.

Mountain Iron Fire Department**Information for Contractors**

Sealed proposals are desired from reputable manufacturers of automotive fire apparatus in accordance with these specifications and with the advertisement, a copy of which is attached, for the piece of apparatus as follows:

Quick Attack Wildland Fire Apparatus, 300 gallon capacity booster tank, compartmented hosebody, non-rated pump system, and all other appurtenances in accordance with the following:

GENERAL REQUIREMENTS: Each bid must be accompanied by bidders accurate written and detailed specifications covering the apparatus and equipment which it is proposing to furnish and to which the apparatus furnished under the Contract must conform. It is the intent of these specifications to cover the furnishing and delivering to the purchaser, complete apparatus equipped as specified. Minor details of construction and materials where not otherwise specified are left to the discretion of the Contractor who shall be solely responsible for the design and construction of all features. Such details and other construction not specifically covered herein or not at variance with these specifications should conform with the intent of the specifications as outlined in Booklet No. 1901 dated 2003.

The apparatus being furnished under these specifications shall conform to the requirements specific to Initial Attack fire apparatus NFPA Booklet 1901 version 2003. Any test equipment required or expense incurred for the Certification Tests shall be borne by the Contractor supplying this equipment.

RELIABILITY OF CONTRACTOR: Contractor shall furnish satisfactory evidence that he has the ability to design, engineer, and construct the apparatus specified and shall state the location of the factory where the apparatus is to be manufactured and tested. The apparatus design shall be an "original" generated by the Contractor/Bidder and not reproductions of fire apparatus designs previously engineered by other Contractors/Manufacturers.

DESIGN: The design of the equipment shall be in accordance with the best engineering practices. The equipment design and accessory installation shall permit accessibility for use, maintenance, and service. All components and assemblies shall be free of hazardous protrusions, sharp edges, cracks or other elements which might cause injury to personnel or equipment. **NOTE:** Where "nibbled" or non-continuous cutting methods are used to machine the body material, all edges shall be reworked/machine smoothed for injury prevention and appearance reasons.

All tubing lines and electrical wiring shall be located in protective positions, properly attached to the frame or body structure and shall have protective loom or grommets at each point where they pass through structural members.

Parts and components shall be located or positioned for rapid and simple inspection and recognition of excessive wear or potential failure. Whenever functional layout of operating components determines that physical or visual interference between items cannot be avoided, the item predicted to require the most maintenance shall be located for the best accessibility.

Cover plates which must be removed for component adjustment or part removal will be equipped with

disconnect fastenings or hinged panels.

Drains, filler plugs, grease fittings, bleeders and check points for all components will be located so that they are readily accessible and do not require special tools for proper servicing. Design practices shall minimize the number of tools required for maintenance.

All components shall be designed and protected so that heavy rain or other adverse weather conditions will not interfere with normal servicing or operation.

All specified stainless steel shall be type 304, 2-B on exterior painted panels and #4-brushed where specified for pump panel overlays and unpainted compartment panels. All specified painted or swirl finish sheet aluminum to be 5052-H32. All specified 4-way aluminum treadplate shall be "polished" treadbrite or equal type 3003 of specified thickness. All specified bolted fasteners shall be coated stainless steel "low profile" button socket head cap screws. All nut fasteners to be Ny-Lok or approved equal, designed to prevent loosening. Substitution of lighter gauge stainless steel, galvanized, or aluminum materials will not be acceptable. No substitute will be acceptable to stainless steel where specified.

NOTE: Lighter gauges of specified materials will not be acceptable.

The materials specified are considered absolute minimum. Exceptions to these material requirements will not be permitted since all raw materials of the specified type are available to all manufacturers. Since all custom manufacturers have the ability to shear, brake, and weld as these specifications require - all basic requirements must be complied with.

Each Bidder shall be prepared, if so requested by the Purchaser, to present evidence of his design experience/capabilities and manufacturing ability to carry out the terms of the contract. The Purchaser does not, in any way, obligate itself to accept the lowest or any Bid.

CONSTRUCTION METHODS AND DISASSEMBLY CRITERION - NO EXCEPTIONS

Since all reputable manufacturers of Fire Fighting Apparatus have the means and ability to design and provide an apparatus body construction (assembly) method, which allows for the convenient "disassembly" of the apparatus body fabrications, it is the Fire Department's desire to ONLY receive proposals incorporating such construction methods.

Apparatus body components that are highly susceptible to operational damage, and must be easily removable, include, but shall not be limited to: Front Body Corners, Outboard Wheel Well Panels, Rear Body Corners, Compartment Floors, Body Rub Rails, and Compartment Door Jambs. Disassembly of previous stated components shall be accomplished with simple hand tools not requiring the use of heat (torches and heat guns), reciprocating saw blades (cutting tools), or material removal tools (drills). Welded or bonded body proposals must demonstrate disassembly procedures that do not require the above equipment and techniques.

Due to the requirement for an apparatus body that can be easily disassembled, for repairs and/or modifications, apparatus body designs and construction methods that employ permanently assembled modules, will not be considered.

GENERAL WARRANTY

The new fire Initial Attack apparatus manufactured per these specifications shall be warranted for a

period of ONE (1) year from the date of delivery, except for chassis and other components noted herein.

Under this warranty, Bidder agrees to furnish any parts to replace those that have failed due to defective material or workmanship where there is no indication of abuse, neglect, unusual or other than normal service providing that such parts are, at the option of the Bidder, made available for inspection upon request, returned to Bidder's factory or other location designated by Bidder with transportation prepaid within 30 days after the date of failure or within ONE (1) year from the date of delivery of the apparatus to the original purchaser, whichever occurs first, and inspection indicates the failure was attributed to defective material or workmanship. Accessories/components warranted by their original manufacturer may be subject to reinstallation charges under the terms of their respective warranties, especially if such warranties exceed the above 1-year warranty terms.

The warranty on the chassis and chassis supplied components, storage batteries, generators, electrical lamps and other devices subject to deterioration is limited to the warranty of the manufacturer thereof and adjustments for the same are to be made directly with the chassis manufacturer by the Purchaser.

This warranty will not apply to any fire apparatus which has been repaired or altered outside the Manufacturer factory or designated facility in any way, which, in the manufacturer's opinion might affect its stability or reliability. Each warranty claim needing repair or service at the designated facility must receive preauthorization by Manufacturer prior to performance of any work.

This warranty will not apply to those items which are usually considered to be normal maintenance and upkeep services: including, but not limited to, normal lubrication or proper adjustment or minor auxiliary pumps or reels.

Refer to the "FIRE PUMP" section and "BOOSTER TANK" section for specific extended Manufacturer's warranties on the provided Fire Pump and Water (Foam) Tank(s).

This warranty is in lieu of all other warranties, expressed or implied, all other representations to the original purchaser, and all other obligations or liabilities, including liabilities for incidental or consequential damage on Bidder's part. Without limiting the foregoing, any express or implied warranties of merchantability or fitness for a particular purpose or warranties arising by Customer usage or by operation of law with regard to any products delivered pursuant hereto are expressly disclaimed. Bidder neither assumes nor authorizes any person to assume for Bidder, any liability in connection with the sales of Bidder's apparatus unless made in writing by the Bidder.

APPARATUS SIZE - CAPACITY - SEATING

Total overall length of apparatus shall not exceed 23 ft. 10 in., highest point of apparatus shall not exceed 94 inches, total overall width of apparatus shall not exceed 96 inches, chassis wheelbase shall not exceed 176 inches, and GVWR shall be at least 19,500 lbs.

RESPONSIBILITY OF PURCHASER: It shall be the responsibility of the purchaser to specify the details of the apparatus, its required performance, the maximum number of fire fighters to ride on the apparatus, and any hose ground ladders, or equipment it will be required to carry which exceed the minimum requirements of this standard.

A total of four (NONE with SCBA's) seating positions to be provided, "Fully Enclosed", with approved seat belts. Two seating positions to be located inside forward chassis cab and two inside rear crew area.

The GAWR, and GCWR or GVWR of the chassis shall be adequate to carry the fully equipped apparatus including full water and other tanks, the specified hose load, unequipped personnel weight (The unequipped personnel weight shall be calculated at 200 lb. per person times the maximum number of persons to ride the apparatus as specified.), ground ladders, and a miscellaneous equipment allowance of 1500 lbs.

INSURANCE REQUIREMENTS

Each Bidder must submit with their bid proposal a Certificate of Insurance listing the proposed manufacturer's product liability insurance coverage. Liability insurance shall be a minimum amount of five million dollars with coverage attained with a minimum of \$1,000,000.00 underlying insurance and \$4,000,000.00 umbrella coverage. Submitted Certificate shall name the apparatus manufacturer, insurance company, policy number, and effective dates of the insurance policy. Bids submitted without the required Certificate, or for Certificates listing less than one (1) million dollars of underlying coverage, plus the four (4) million dollar umbrella coverage, will be considered non responsive and automatically rejected. No exceptions are allowed to the minimum insurance coverage requirement.

The manufacturer shall maintain full coverage on the purchaser's cab and chassis from time of first possession by the manufacturer until the apparatus is delivered and accepted by the purchaser. No exceptions. Purchaser reserves the right to require proof of insurance from the manufacturer's insurance carrier prior to entering into a contract for the apparatus.

PROPOSAL PRINT/DRAWING

Each Bid shall be submitted with a complete detailed print of the apparatus as is specified. The print shall be to scale, minimum of 1 inch = 20 inches, of the exact apparatus being proposed, and not a stock print of a similar unit. All dimensions are subject to a +/- 1/4 inch tolerance. The print shall have complete views of the driver side with chassis cab, passenger side with chassis cab, and the rear of body. The print shall include all of the following depicted items:

CHASSIS: exact replication of model of furnished chassis cab and steps, with vendor furnished: grille guard and winch, 120-volt shore power receptacle, emergency lighting fixtures, and horizontal exhaust system outlet.

APPARATUS BODY: the apparatus body subframe, tow eyes, water tank profile with baffles and suction sump, all exterior 4-way treadplate pattern areas, body access steps, hand rails, interior compartment shelving, emergency and non-emergency lighting fixtures, roll-up door slats/bundles/bar type handle/latches, and cargo area arrangement, and hose reel installation.

FIRE PUMP & PUMP SYSTEM: fire pump controls and instrument panel layout, discharge outlets with closures, suction inlets with closures, and other specified accessories and features.

ADDITIONAL OPTIONAL FEATURES: other optional features, if specified, shall also be included on the proposal drawing, this includes; front bumper extension with attached accessories, interior compartment shelves and roll-out trays, rewind reels, permanent mounted quartz lighting, 120-volt exterior body receptacles, and other detailed accessories and features so as to provide a "picture" of the proposed apparatus.

COMPLIANCE: this required drawing shall become a part of the Proposal. As with the specified Bidder's Bond, failure to submit the above required drawing, with the sealed bid proposal, will cause

immediate rejection of the bidder's proposal.

Quality and accuracy of Bidder's Proposal Drawing will be a major consideration, for determining of most acceptable proposal.

PHOTO DOCUMENTATION: Bidder shall refer to the following specifications and include any asked for photos, or drawings of required feature enhancements, documenting they have provided these features in the past and are prepared to provide them as required for this Bid Proposal.

ACCEPTANCE TESTS AND REQUIREMENTS

Acceptance tests on behalf of the purchaser shall be prescribed and conducted prior to delivery or within 10 days after delivery, by the manufacturer's representative in the presence of such person or persons as the purchaser may designate in the requirements for delivery.

ALTITUDE REQUIREMENTS: The apparatus shall be designed to meet the specified rating at 2000 feet altitude above sea level.

ROADABILITY: The apparatus, when fully equipped and loaded per "Carrying Capacity", shall be capable of the following performance on dry/level/paved roads in good condition: From a standing start the vehicle shall attain a true speed of 35 MPH within 25 seconds. The vehicle shall attain a minimum top speed of 50 MPH. The apparatus shall be able to maintain a speed of at least 20 MPH on any grade up to and including 6%.

ROAD TESTS: Specified acceleration tests shall consist of two runs in opposite directions over the same route. From a standing start, through the gears, the vehicle shall attain a true speed of 35 mph within 25 seconds in the case of pumpers, and a true speed of 55 mph within 60 seconds.

The service brakes shall bring the fully laden apparatus to a complete stop from an initial speed of 20 MPH in a distance not exceeding 35 ft., on a substantially hard level surface road free from loose material, oil, or grease.

A pump test shall be conducted by the apparatus manufacturer. A Certificate of Testing shall be furnished to the Purchaser.

Responsibility for the apparatus and equipment shall remain with the contractor until acceptance by the purchaser.

The Manufacturer must supply at the time of delivery, at least two copies of:

1. Pump Manufacturer's Certification of Pump Test Results.
2. Weight documents from four (4) individual certified scales showing actual loading on the sides of front axle, sides of rear axle(s), and overall (four total) vehicle (with the water tank full but without personnel, equipment, and hose) shall be supplied with the completed vehicle to determine compliance with NFPA section 10-1. Weights shall be for each tire or dual set of tires, so as to verify side-to-side loading, to be in compliance with NFPA section 4.12.2.3.3
3. At least two copies of the complete operation and maintenance manual covering the completed apparatus as delivered including the pump, emergency lighting and siren, generator, or other furnished

accessories.

4. Wiring diagrams of 12-volt electrical systems, installed by apparatus body manufacturer (prime contractor). Diagrams must be "vehicle specific", describing all 12-volt electrical functions as furnished on this **and only this** apparatus.

5. A finalized drawing of apparatus as completed.

6. A "Delivery Manual", consisting of a 3-ring notebook type binder with reference tabs for each section, shall be furnished to include the following items: invoice copy(ies), Manufacturer's Statement of Origin, acceptance forms, certifications, specifications, individual component manufacturer instructions and parts manuals, warranty forms for body, warranty forms for all major components, warranty instructions and format to be used for compliance with warranty obligations, routine service forms/publications, technical publications or training guide for major components, and apparatus body print "as built".

7. Paint numbers of all color coatings.

8. Certifications of water tank capacity.

NOTE: Exceptions to the above requirements will not be acceptable.

The contractor shall affix a permanent plate in the driver's compartment specifying the quantity and type of fluids used in the vehicle:

All nameplates and instruction plates shall be metal or plastic with the information permanently engraved, stamped, or etched thereon. Metal nameplates to be installed with plated screws. All nameplates to be mounted in a conspicuous place.

FACTORY DELIVERY:

The maximum period for construction of the vehicle shall not exceed 150 working days and shall include the time required for delivery of the chassis to the apparatus manufacturer. The contractor will not be held liable for delay of delivery caused by accidents, strikes, floods, or other events not subject to their control. Bidder shall specify on the required Bid Proposal Form the number of working days for completed delivery of the apparatus, from date of bid acceptance.

The completed unit shall be delivered to the purchaser at the Factory of the Manufacturer with full instructions provided to Fire Department personnel present on operation, care, and maintenance of apparatus.

DELIVERY ENGINEER: Delivery training shall be performed by a factory Delivery Engineer only employed by the Bidder. Delivery Engineer shall remain with the acceptance committee for a reasonable time for training and making normal adjustments.

Delivery shall be considered to include, but not be limited to: conducting day or evening classes for instruction of Fire Department personnel and Drivers for operation.

The Delivery Engineer shall be factory trained, fully capable of conducting informative classes on the

complete operation of the vehicle. This means familiarity with engine, running gear, transmission, driving skill, as well as handling of pump equipment and all controls.

The Delivery Engineer shall set delivery and instruction schedule with the person appointed by Purchaser, recognizing the need for either daytime or evening classes. Advance notice of at least one (1) week will be given, advising the specific day on which the new apparatus will be ready.

COMMERCIAL STYLE CHASSIS

The following specified commercial chassis shall be furnished, by the apparatus body builder, and included in the total Bid Proposal Package.

2009 CAB AND CHASSIS TO BE FURNISHED:

TYPE/MODEL:

Chassis shall be new, unused with warranty start on completed delivery.

Model to be a Ford 550 4x4, 4-Door Crew Cab & Chassis

Wheelbase to be 176 inches, with 60 inch cab-to-axle.

COLOR AND TRIM LEVEL:

Cab exterior and interior (where metal is exposed) color to be Ford Red, "clear-coated"

Ambulance Prep Package

XLT Trim

Premium Radio: AM/FM/CD

Tilt Steering Wheel

Power Mirrors

Air Conditioning and Heater/Defroster

Jewel Headlamps

4-wheel ABS

Rear Suspension Stabilizer

Driver Side & Passenger Side Air Bags

ENGINE, TRANSMISSION , TIRES AND AXLES:

6.0 Liter V-8 Diesel Engine

Heavy-duty 5-speed electronic automatic transmission shall be furnished with overdrive.

Steering column shift control to be provided for transmission with overdrive "lockout" switch.

2-speed part-time HI/LOW transfer case, with floor shift control.

Manual Locking Front Axle Hubs

Transmission PTO Provisions.

LT-225/70R , "F" 19.5" Max Traction, Tubeless Tires

Six (6) each, 19.5" x 6.0" Steel Disc 8-hole Wheels

4.88 Ratio Limited Slip Differential

CHASSIS EQUIPMENT AND FEATURES:

19,500-lb Gross Vehicle Weight Rating

Engine Block Heater

50-State Emission Compliance

Two (2) 130-amp 12-volt Alternators

Minimum 19-gallon aft axle fuel tank.

Two (2) front tow hooks.

ADDITIONAL CAB FEATURES:

Dome lamp and dual map lights.

Power windows

Power door locks.

Dual Front Bucket Seats, lap and shoulder style safety belts.

Full width rear bench seat, with two (2) headrests

Black Rubber Floor Covering (delete carpet).

Chrome front bumper and lower center trim.

Chrome grill surround insert.

Auxiliary 12-volt power point, below dash.

BRAKES:

4-wheel Hydraulic, with Hydra-Boost

Disc Style, Front and Rear

Foot Operated Rear Park Brake.

12-VOLT ELECTRICAL & INSTRUMENTS:

Two (2), 12-volt batteries, 750 CCA each.

Tachometer.

Trip Odometer.

Oil pressure, coolant temperature, and fuel level gauges.

MODIFICATIONS TO CHASSIS:

The following modifications shall be made by the apparatus body builder, to the furnished fire apparatus truck chassis. Each modification shall be described within the Manufacturer's proposal specifications so as to prove compliance or non-compliance with the following:

SUPER DUTY CHASSIS RELATED MODIFICATIONS:

ELECTRICAL WIRING INSTALLATION STANDARDS - 12 VDC

All electrical circuit wiring installed by the apparatus body builder shall be stranded copper alloy conductors of a gauge rated to carry 125% of the maximum current for which the current is protected. Wiring shall be colored and/or printed with circuit function code over each conductor's entire length.

ELECTRICAL WIRING INSTALLATION PERFORMANCE - 12 VDC

All wires shall be of sufficient size so that voltage drop in any electrical device shall not exceed 15%.

BATTERY CABLE INSTALLATION STANDARDS

A master power battery cable shall be routed from batteries' common positive to battery switch, and from battery switch to a high amperage threaded stud power distribution terminal post. All battery cables shall be minimum 1-0 heavily insulated fine multi-stranded copper enclosed within high temperature vinyl loom and equipped with plated copper soldered terminals/lugs. Edge protector or rubber grommets shall be furnished where ever battery cables pass through sheet metal panels.

AUDIBLE DEVICE INSTALLATION STANDARDS

When furnished, horns, electronic siren speakers, and other audible emergency equipment shall be mounted as low and as far forward on the apparatus as practical. Audible warning equipment shall not be mounted on the roof of the chassis cab.

GROUND CLEARANCE STANDARDS

Axle housings shall clear the road surface by at least 8" and an angle of departure of at least 8 degrees shall be maintained at rear of the vehicle when fully loaded.

PLACARDS

A permanent sign that states "Occupants Must Be Seated And Belted When Apparatus Is In Motion" shall be provided. The sign shall be visible from each seated position. Additionally, an accident prevention sign shall be located at the rear step area of the vehicle to warn personnel that standing on the step while the vehicle is in motion is prohibited.

CHASSIS MODIFICATIONS SPECIFIC FOR QUICK ATTACK APPLICATION:

Apparatus body builder shall make available to Customer, actual bare chassis 4-point weights, actual bare chassis 4-point top frame rail heights, and actual suspension deflection amount with imposed weight of 4,000 lbs.

All chassis frame rail mounted brackets, supports, and apparatus body subframe components shall be bolted to the frame rail sides. No holes shall be drilled in the frame flanges, only the web shall be drilled. No welding shall be allowed to the chassis frame, web, or flanges, ahead of the rear most suspension brackets. Where U-bolts are used, a spacer shall be furnished between chassis frame flanges, to prevent collapse of the same.

The rear under frame mounted fuel tank shall have fuel fill extended to driver's side outboard flat bed, extension to include: necessary fuel fill hose, and appropriate vent line. A minimum 2" threaded brass or threaded ratchet vented fuel cap shall be furnished, as inlet to the fuel fill hoses and air vent line.

OCCUPANCY LABEL

A permanent plate or label, stating the maximum number of personnel allowed to ride on the apparatus, shall be provided and installed in clear view of the driver.

WARN TRANSFORMER CHROME OR STAINLESS STEEL BRUSH GUARD, FULL WIDTH

A full chassis cab width, bolt-on and removable, chrome plated or stainless steel metal "brush-guard" shall be furnished, installed without modification to the OEM bumper and grille. Brush-guard shall be constructed of heavy tubular metal, designed with unobstructed openings for the front head lights, turn lights, and radiator frontal area. Transformer shall be provided with a winch carrier installed

REMOVABLE 12-VOLT WINCH ASSEMBLY, RAMSEY 9000#

A Ramsey model QM9000, 9,000 lb. (4070 kg) 12-volt electric winch shall be provided.

The winch shall have one (1) forward speed and one (1) reverse speed and shall be operated by a push button controller which includes a minimum twelve (12) feet of control cable and a weatherproof receptacle.

The winch shall be supplied with an installed hook and one hundred five (105) feet of galvanized aircraft

cable of a minimum 5/16" diameter. The winch will also include one (1) hawse fairlead style cable guide.

The winch shall be provided with a remote mounting system with male hitch assembly and 12-volt connector that will allow the capability of moving the winch to multiple receiver sites on the apparatus.

NOTE: Customer shall specify if the "optional" Ramsey P/N 251112, 25 ft. Control Cable Length, is required.

ELECTRIC WINCH RECEPTACLE FRONT AND REAR

Front and Rear receiver areas shall be equipped with heavy duty 12-volt quick disconnect receptacle, wired to chassis batteries with loom encased insulated multi-stranded copper battery cables.

FUSE PROTECTED WINCH BATTERY CABLES

The above specified winch 12-volt power receptacle(s) shall be high-amperage fuse protected.

ELECTRICAL CONSOLE, WITH BINDER POCKETS

A custom-built, fabricated aluminum, electrical accessory console shall be furnished, installed inside the chassis cab, between front driver's and officer's seats. Console to be of "all-bolted-construction" (to allow for future modifications), maximum width, with horizontal back top surface same height as driver's and officer's seat bottom cushions, and forward "raised" sloping surface. Horizontal and sloping top surfaces of electrical console shall accommodate Customer's 2-way radio control head, the specified emergency lighting rocker switch panel, electronic siren control, and other specified accessory controls. Rear portion of console shall have at least three (3) individual pockets, sized to accommodate clip boards and 3-ring binders. Underside interior of console shall accommodate the wiring bundles, connectors, and circuit protection devices. Console to be unpainted, natural aluminum finish with machined "swirl" pattern.

MASTER BATTERY CUT-OFF SWITCH

A Cole Hersee model 75908 200-amp two-position battery "cut-off" switch shall be furnished, mounted on on cab floor (or custom fabricated bracket), just inside driver's side cab door, easily accessible to driver. Minimum 1-0 multi-stranded copper battery cables shall run from specified battery system to battery post of Cole-Hersee cut-off switch. A second heavy gauge battery cable shall run from power terminal of Cole Hersee cut-off switch to a high-amperage terminal post and to the power distribution center. All cables shall be enclosed in heavy water-proof automotive loom.

A green "battery-on" pilot light shall be furnished, mounted adjacent to battery switch, or cab dashboard, visible to driver.

NOTE: The battery cutoff switch shall be wired so as to NOT remove power from the chassis electronic memory systems.

SWITCH PANEL, WITH MASTER ROCKER

Specified emergency lighting fixtures, non-emergency lighting fixtures, and electrical components shall be individually activated by fully illuminated rocker style switches. Emergency lighting switches to be illuminated RED, non-emergency switches to be illuminated WHITE or BLUE. An illuminated red tip paddle switch shall be furnished to left of emergency lighting rocker switches, identified as "MASTER EMERGENCY SWITCH". Toggle switch to provide power to the other individual emergency lighting switches. Back-lit nametags, describing function of each individual switch, to be located above toggle and rocker switches. Switches to be mounted on an embossed aluminum electrical panel.

ON-BOARD BATTERY CHARGER - 15 AMP

A Kussmaul model 091-56-12, Auto-Charge 1000, 15-AMP output/120-volt input fully automatic single 12-volt battery system charger shall be furnished, installed inside the chassis cab, with remote charge indicator Bar Graph Display visible from ground level through open driver's door. Charger to be powered by the following specified 120-volt shore power receptacle.

120 VOLT AUTO EJECT SHORE PLUG - An autoeject recessed shoreplug with gray weatherproof spring loaded cover shall be furnished and installed on cab side wall above driver's side exterior flat bed side assembly, conveniently accessible from ground level. Back side of shoreplug shall be equipped with protective cover, wiring to be enclosed inside coated fabric loom extending into chassis cab interior to power the specified 110-volt powered accessories.

CHASSIS CAB 120-VOLT SHOREPOWERED RECEPTACLE(S)

One (1), chassis cab interior electrical console mounted 120-volt plug-in receptacle(s) shall be furnished with: surface mounted cast aluminum receptacle box, duplex 120-volt 3-wire household plug-in receptacle, metal duplex cover plate, protected wiring to the specified shoreplug, and engraved nameplate to read: "120-VOLT SHORE POWER."

FRONT BODY COMPARTMENT 120-VOLT SHOREPOWER

One (1) power strip 120-volt plug-in receptacles shall be furnished, in front driver side upper compartment, exact location to be on front wall, receptacle shall include: 120-volt 3-wire household female plug-in receptacles, protected wiring to the specified shoreplug, and an engraved nameplate to read: "120-VOLT SHOREPOWER."

FRONT WHEELWELL MUD FLAPS

Driver's side and passenger's side front fender wheelwell extension mudflaps shall be furnished, made of fabric reinforced neoprene rubber, bolted to the front fender liner, using stainless steel strap brackets and bolts. Mudflaps shall extend approximately 10" below bottom of cab.

BACK-UP ALARM

One (1), Preco model 230, or equal 97 db12-volt electronic back-up alarm to be furnished, mounted at rear below body, activated by reverse gear of truck transmission.

ENGINE DRIVEN PUMP:**HALE ENGINE DRIVEN PUMP**

One (1), Hale model HPX-200-B18 to be provided.

Pump Performance

The pump/engine shall perform to the standards of ISO 9 and NFPA 1906 low-pressure pump rating. Typical pump performance from 4 foot (1.52 mt) draft at sea level using a 2.5in Suction line and a 2.5in discharge shall be: 60 GPM (227 ltpm) @ 150 PSI, 150GPM (567.8 ltpm) @ 100 PSI, and 245 GPM (927.42ltpm) @ 25 PSI.

Pump

The pump body shall be made of alloy aluminum castings coupled together with a stainless steel band clamp with an O-ring seal which allows quick pump volute removal for servicing. The pump end shall be factory hydrostatically tested to 250 PSI for 10 minutes. The impeller shall be bronze. The renewable

clearance rings shall be made of anodic plated bronze to inhibit galvanic corrosion. The impeller shall be 8.75 inches (22.23 cm) in diameter and designed with a sleeve back end to prevent water from coming in contact with the engine shaft. The pump shaft seal shall be an automatically adjusting, maintenance free, mechanical type. The pump body shall be equipped with a petcock drain valve.

Priming

The pump shall be equipped with an exhaust venture primer of brass and stainless steel construction. The primer shall be capable of 20 inches of mercury vacuum. The primer shall be actuated with a spring return, single control lever located at the operators panel.

****Discharge**

The discharge ports shall be female NST thread, designed and located to accept applicable hose thread adapters.

Mounting Platform

The pump/engine shall be isolation mounted onto a steel base plate.

Ball Valves

The valves shall be cast of 316 stainless steel including the ball with full flow capability. The valve shall be warranted for a period of 10 years on all stainless steel components against defects in design and manufacturing processes. The wear items such as the seats, seals, and "O" rings shall have a warranty of two years on replacement parts only.

Instrumentation

The pump shall be supplied with a control panel set up for easy viewing. This includes a throttle lever, primer control cable, master switch, starter button, choke control, a 2.5 inch liquid filled discharge gauge, light switch, hose reel button, and an oil pressure warning light.

Piping and Manifolds

All the piping and pump body attached manifolding shall be stainless steel. The complete piping system shall be designed to direct mount all 1" (2.54 cm) or larger ball valves onto the pump body or stainless steel manifolds attached directly to the pump body.

Tank Fill

There shall be a 1" (2.54 cm) pump to tank fill stainless steel valve.

Booster Hose Discharge

There shall be a 1" (2.54 cm) booster hose reel discharge provided with a stainless steel valve.

Rear 1 1/2" Discharge

There shall be a 1 1/2" rear discharge provided with stainless steel valve along with cap and chain.

Tank to Pump

The tank to pump valve shall be 3" inline, installed between the water tank and the pump. The valve shall be a quarter turn ball type, fixed pivot design and be constructed of stainless steel. The tank to pump 3" (7.62 cm) valve shall have a hose barb connection.

Gated Suction Connection

The Gated Suction valve shall be 2.5" inline, with a 2.5" NST female swivel coupling. The valve shall be

a quarter turn ball type, fixed pivot design and be constructed of stainless steel. The tank to pump 2.5" (6.35 cm) valve shall be provided with plug and chain.

Wiring Harness

The Class 1 electrical wiring harness shall be constructed using GXL wire per SAE J1128. Terminals shall meet the minimum pull test as required by the manufacturers pull test and crimp measurement data. All splices shall be manufactured using the ultra sonic splice process. Harness shall be 100% connected to a Dynalab® circuit tester to insure continuity and correct assembly.

HALE Series Class A Foam System

The apparatus shall be equipped with an automatic electronically controlled, direct injection, discharge side foam proportioning system. Foam proportioning operation shall be based on direct measurement of water flow, and remain consistent within the specified flows and pressures.

A 12-volt DC powered variable-speed electronic direct-injection foam-concentrate proportioning system with a 2.1-gpm-foam concentrate pump shall be integrated into the apparatus to provide foam proportioning. The pump shall be capable of handling Class A foam concentrate only and be operated by a full-function panel mounted digital display.

The system shall operate via a paddlewheel flow sensor mounted in a 3" (7.62cm) stainless steel check-valve manifold that includes a chemical injection point.

The inlet of this stainless steel manifold/check-valve assembly will be connected to the fire pump, and the outlet connected to the foam capable discharge outlet(s) on the fire apparatus, as specified. The flow sensor/stainless-steel foam manifold combination shall be capable of water or foam solution flow rates of 30- to 750-gpm.

The foam proportioning system shall be equipped with a panel mounted digital display control unit with a microprocessor that monitors total water flow and foam concentrate pump output to provide the operator preset proportional amount of foam concentrate injected on the discharge side of the fire pump. Total foam concentrate pump concentrate output shall be 2.1 gallons per minute (7.95 lbs). Proportioning rate is push-button set by the pump operator on the digital display from 0.1% to 1%, in 0.1% increments.

The digital display panel mounted electronic operator control unit shall provide concentrate injection readout in tenths of a percent while also being able to read water flow, total water flowed and total amount of foam concentrate used. The control shall flash a warning indicating low concentrate in the reservoir to the operator, and shall be able to shut off the concentrate pump to prevent damage to the pump. A bar graph on the control unit shall provide visual indication of system operating capacity and will indicate when capacity is exceeded.

The foam concentrate pump shall be fed concentrate by a non-metallic housing foam concentrate strainer that is equipped with a service shut-off valve.

The unit will be fed 12-volt DC power from the apparatus electrical system, and be equipped with a chassis frame ground strap, per the foam proportioner manufacturers installation and operating instruction manual.

The system shall be piped to the discharge, and/or optional jump line or hose reel.

Engine

The engine shall be a Briggs and Stratton Vanguard, overhead valve, air cooled design. Engine rating shall be 20 BHP at 3600. Engine displacement shall be 614cc and shall be designed to meet CARB (California Air Resources Board) standards. A 12-volt electric system shall be provided with electric starter and a 20amp alternator. Recoil backup engine starting shall be provided. Engine shall be equipped with a residential muffler with USDA approved spark arrestor and a removable heat isolation blanket.

OPTIONAL CAFS**PNEUMAX MODEL 70-35-E MODULAR COMPRESSED AIR FOAM UNIT**

A modular slide-in compressed air foam unit shall be provided as described herein. It shall be designed and constructed to discharge water, foam solution or compressed air foam from all discharge ports. In addition, the consistency of the compressed air foam (expansion ratio) from each discharge shall be individually adjustable.

FRAME AND ENCLOSURE

A steel frame weldment shall be provided to support and enclose the entire CAFS module, constructed of .083" wall steel square tubing. The sub-frame shall be made of 1" x 1" and 1 x 1.5 steel tubing, sufficient to support the weight of the module while in the apparatus and during loading and unloading.

All fastening hardware used in the construction of the unit shall be Grade 8, manufactured in the USA.

Smooth .090 aluminum plate panels shall enclose the unit on the front, rear and sides. The top of the enclosure shall have a full length and width hinged lid constructed of .090 smooth plate with a full-length stainless steel piano hinge and two (2) chrome plated lift and turn latches.

All steel structural members and aluminum plate panels shall be powder coated for a durable and attractive finish.

PERFORMANCE

The compressed air foam system shall be capable of developing a minimum of 70 gallons per minute of water at 100 PSI and 35 cubic feet of air at 100 PSI simultaneously. The compressed air foam system shall also be capable of developing a minimum of 50 gallons per minute of water at 125 PSI and 25 cubic feet of air at 125 PSI simultaneously (NFPA rating). The unit shall also be capable of pumping water or air independently. With the air compressor in the "unload" mode, the unit shall be capable of pumping a minimum of 90 GPM of water or foam solution at 125 PSI. It shall also be capable of producing 35 CFM of air at 125 PSI independently.

POWER UNIT

The engine shall be a Briggs and Stratton Vanguard model 380447 two-cylinder, four-cycle gasoline type developing 23 shaft horsepower. The engine shall have 627cc displacement, air cooling, sintered iron cylinder liners, electric start, 12 volt electrical system with 20 amp alternator, spin-on oil filter, external oil cooler, pulse fuel pump and spark arrestor muffler. A fuel filter shall be provided with a connection for the fuel supply.

The engine shall include a manufacturer's two (2) year warranty.

OPTION – Diesel engine pump fuel supplied from vehicles tank.

POWER TRANSMISSION

The water pump and air compressor shall be driven by a dry Poly Chain transmission. The drive system shall utilize 8mm pitch sprockets and belts, sized to handle the speed and horsepower requirements of the water pump and air compressor. The power transmission shall be capable of operating in ambient temperatures of -65 degrees F to +185 degrees F.

The transmission shall have sufficient power handling capacity to allow extended operations at full load while maintaining acceptable operating temperatures and component life.

ELECTRICAL SYSTEM

All electrical equipment installed by the manufacturer shall conform to current automotive electrical system standards and the requirements of the applicable N.F.P.A. Apparatus Standard. In addition, the completed unit shall not produce any RFI emission.

Wiring shall be individually and permanently color-coded. The insulation shall meet SAE Standard J1128 in its latest edition for GXL or SXL temperature rating. All exposed wiring shall run in loom with a minimum 280 degree Fahrenheit rating. All wiring looms shall be properly supported and attached to frame members along the entire run. At any point where wire or looms must pass through metal, rubber grommets shall be installed to protect the wire from abrasion.

The main low voltage electrical interface point and circuit breaker panel shall be provided at the front of the unit in a location providing easy service access.

Electrical connections shall be made using heat shrink or weatherproof connections. Circuits shall be protected with automatic reset circuit breakers.

WATER PUMP

A Hypro centrifugal water pump shall be utilized. It shall utilize a closed grain iron case, reinforced Nylon impeller, stainless steel shaft, front and rear wear rings and maintenance free mechanical seal. The pump inlet and discharge outlet shall each be 1.5 in diameter.

PUMP PRIMING SYSTEM

A pneumatic oil-free priming system shall be utilized that is capable of priming the water pump through 20 feet of 2.5" hard suction hose with a 10 foot lift. Primer controls shall be mounted on the operator's panel.

PUMP COOLER

A water pump circulation line shall be provided for pump cooling. 3/8" ID tubing shall be routed from the discharge side of the pump, through the compressor cooler and return to the booster tank.

AIR COMPRESSOR SYSTEM

The air compressor shall be an oil flooded rotary screw type, sized to supply a minimum of 35 SCFM of useable air in the installed configuration. The system shall be designed to produce the compressor's rated output when the water pump is developing 100 to 125 PSI in a "no flow" state. The air compressor shall be capable of maintaining prolonged pressures from 100 to 150 lbs. per square inch throughout the service life of the compressed air foam system.

A pneumatic modulating inlet valve mounted on the air end inlet shall control the compressor. This

controller shall sense air pressure and control the air delivery of the air end while maintaining constant pressure. An automatic balancing system shall be provided to maintain the air pressure within plus or minus 5% of the water pump pressure, throughout the pressure range. A Pneumax Auto Sync dual mode controller shall be provided on the pump operator's panel with the following settings:

AUTOMATIC Air pressure matched to water pressure.

:

FIXED: Air pressure defaults to manual setting on compressor mounted control valve.

UNLOAD: Air pressure reduced to 40PSI for standby or water/solution only pumping operations.

Compressor system oil shall be routed in wire braid reinforced hose conforming to SAE 100R1 standards for hydraulic hose. Air control hoses shall be SAE J844 push-on type, color coded to simplify troubleshooting.

The compressor system sump/pressure vessel shall be constructed of aluminum and shall be integral with the air end. The sump shall have a dipstick with a screw-in cap installed for oil level monitoring, a 1" threaded oil fill cap and a drain plug located in the lowest point. The air compressor system shall incorporate a spin-on, full-flow oil filter module with an integral thermostatic valve to control oil flow to the cooler.

An air/oil separator cartridge shall be integrated into the sump/pressure vessel. Replacement elements shall be readily available.

The air compressor shall be cooled by the unit's water pump, utilizing a shell and tube heat exchanger constructed of copper and brass. Water shall flow through the heat exchanger whenever the pump is operating. The air compressor cooling system shall be capable of maintaining recommended operating temperatures throughout the full operational range in ambient temperatures up to 115 degrees Fahrenheit.

A dry element air intake filter shall be provided on the compressor air inlet, mounted on top of the air compressor module. Replacement air filters shall be readily available.

Inlet Plumbing

Pump inlet piping shall be 1.5" brass pipe with a 1.5" Elkhart tank to pump valve, controlled at the pump panel. A 1-1/2" overboard pump inlet shall be provided with a 1.5" M-NST connection and chrome plated plug.

Discharge Plumbing

Plumbing to a panel mounted 1.5" discharge outlet shall be plumbed with brass pipe. A .75" tank fill provision with .75" quarter-turn valve shall be provided. Victaulic type couplings shall be utilized in the discharge plumbing for flexibility and improved serviceability. The discharge valve shall be Elkhart brand. Discharge plumbing shall be designed and tested to a minimum 500 PSI burst pressure.

Drains

Panel mounted valves shall be provided to drain water from the water pump, discharge plumbing and

compressor cooler.

Foam Proportioner

A FoamPro System 1601 automatic foam proportioner shall be provided and installed to inject foam concentrate into all discharges. The proportioner shall automatically meter the correct percentage of foam concentrate, based on current flow, into the water stream. Flow shall be measured with a 1.5" paddlewheel sensor. A check valve shall be provided ahead of the foam injection point to prevent back-flow. A 12 volt electric positive displacement pump shall be rated to flow 1.7 gallons per minute and pressures up to 250 PSI. The proportioner control head shall be mounted on the pump panel.

Air Lines

All air hoses, fittings and piping shall be rated to a minimum of 250 PSI. Check valves of stainless steel and brass construction shall be provided at the air injection point to prevent water back-flow into the air system. All hoses shall be routed in a neat and orderly fashion, secured to the frame with insulating clamps and located away from any heat sources.

Operators Panel

The operators panel shall be constructed of smooth aluminum plate with a durable powder coat finish. The following controls and instruments shall be provided on the panel:

- 2.5" oil-free master water pressure gauge
- 2.5" oil-free master air pressure gauge
- Air compressor temperature gauge and provision for an overheat alarm
- Tachometer/ hourmeter
- Engine ignition/start switch
- Throttle control
- Auto Sync compressor controls and instruction plate
- Proportioner control head and instruction plate
- Push-pull discharge valve control
- Jet Prime pneumatic priming system control and instruction plate
- 1.5" M-NST chrome plated discharge outlet
- Quarter-turn compressed air discharge control for CAFS discharge located next to the water valve control
- Push-pull tank to pump valve control
- Quarter-turn pump circulation/tank fill valve control
- Pump inlet with 1.5" M-NST connection

Push-pull controls shall have chrome plated T handles. Engraved and color coded metal pump panel tags shall be mechanically attached to the pump panel to identify each instrument and control.

SYSTEM TESTING

The completed unit shall undergo a manufacturer's run-in test prior to delivery. The engine, pump and air compressor shall be operated at full load for a minimum period of two (2) hours, during which time the operator shall monitor the functions of each system component and record the test results at 15 minute intervals. Compressed air foam shall be produced during the test. This testing is to be performed to ensure proper systems operation and performance prior to shipment.

MANUALS

Two (2) copies of operation and maintenance manuals shall be provided to the purchaser with the unit. Manuals shall include detailed instructions in the operation and maintenance of the overall unit, engine, water pump, air compressor and foam proportioner.

TO PROVIDE PLEASE ADD \$ _____

GATED PUMP COOLER LINE, 1/4-TURN CONTROL

One (1), gated 3/8" pump recirculating/cooling line, from pressure side of engine driven fire pump to water tank top to be provided with: 3/8" female TIPT spud located at top front of water tank, high pressure tubing, and 3/8" bronze body 1/4-turn ball style valve with chrome handle located on operator's control panel. Valve to be identified as pump cooling line.

HOSE REEL(S)

ELECTRIC REWIND BOOSTER REEL - 200 FT. 1" HOSE, PISTOL-GRIP NOZZLE

One (1), Hannay 1" electric/manual rewind booster hose reel to be furnished located in upper header area of the rear of body, equipped with: exterior push button rewind switch, interior compartment mounted 4-way polished stainless steel hose roller assembly, interior compartment nozzle holder, and hinged access door with D-ring latch assembly. Reel to be equipped with 200 ft. of 1" i.d. 600 psi Fire Department booster hose and Task Force Tips DQS40P QuadraFog series 1" booster hose nozzle with pistol grip.

TUBULAR HOSE ROLLER AND SPOOL GUIDE ASSEMBLY

One (1) booster hose roller assembly shall be furnished, positioned to allow booster hose to be deployed to the sides, and rear of vehicle. Hose roller assembly to be 3-way, consisting of: two (2) vertical chrome plated spools, and one (1) horizontal polished stainless steel tubular roller full width of cargo area.

BOOSTER TANK:

PLATFORM/SKID MOUNTED WATER TANK WITH FOAM CELL

300 GALLON CAPACITY WATER & 8 GALLON CAPACITY FOAM

The apparatus shall be equipped with a 300 gallon capacity water/8-gallon foam capacity polypropylene thermoplastic water tank.

The tank body and end bulkheads shall be constructed of minimum 1/2" thick, polypropylene, nitrogen-welded and tested inside and out. Tank construction shall conform to current Fire Apparatus Standards, fully baffled, and vented.

The transverse and longitudinal minimum 3/8" thick swash partitions shall be interlocked and welded to each other as well as to the walls of the tank. The partitions shall be designed and equipped with vent holes to permit air and liquid movement between compartments.

The minimum 1/2" thick top shall be recessed approximately 3/8" from the top of the side walls. Drilled and tapped holes for lifting eyes shall be provided in the top area of the booster tank.

The water fill tower shall be designed, sized and located as required by the needs of the tank. The polypropylene fill and overflow tower shall be equipped with a removable lid and polypropylene screen. The overflow tube shall be installed in fill tower.

The tank shall rest on, and be integral with, a flat platform/skid, complete with side gusset supports, rear portion of platform designed to accommodate mounting of the specified engine driven fire pump.

The water tank-to-pump "suction" line shall be of adequate size to allow for maximum GPM capacity of specified fire pump, rear exterior outlet located at least 6" above tank bottom.

FOAM RESERVOIR

One (1), 8-gallon foam reservoir shall be furnished "notched" into the top rear corner of the water tank. The foam reservoir shall include foam feed tap, low foam level sensor tap, and a foam fill stack with removable cover and vent.

LIFETIME WARRANTY

The water tank, and its installed accessories, shall be covered by a "Lifetime" Warranty, against cracks, corrosion, or other failures caused by the tanks design and normal use of the same. The warranty shall be between the tank manufacturer, and the customer.

WATER TANK INDICATOR

Fire Research TankVision model WLA200-A00 tank indicator kit shall be installed. The kit shall include an electronic indicator module, a pressure sensor, and a 10' sensor cable. The indicator shall show the volume of water in the tank on nine (9) easy to see super bright LEDs. A wide view lens over the LEDs shall provide for a viewing angle of 180 degrees. The indicator case shall be waterproof, manufactured of aluminum, and have a distinctive blue label.

The program features shall be accessed from the front of the indicator module. The program shall support self-diagnostics capabilities, self-calibration, and a datalink to connect remote indicators. Low water warnings shall include flashing LEDs at 1/4 tank, down chasing LEDs when the tank is almost empty, and an output for an audio alarm.

The indicator shall receive an input signal from an electronic pressure sensor. The sensor shall be mounted from the outside of the water tank near the bottom. No probe shall place on the interior of the tank. Wiring shall be weather resistant and have automotive type plug-in connectors.

CLASS A FOAM TANK INDICATOR

Fire Research TankVision model WLA260-A00 tank indicator kit shall be installed. The kit shall include an electronic indicator module, a pressure sensor, a 10' sensor cable and a tank vent. The indicator shall show the volume of Class A foam concentrate in the tank on nine (9) easy to see super bright LEDs. A wide view lens over the LEDs shall provide for a viewing angle of 180 degrees. The indicator case shall be waterproof, manufactured of aluminum, and have a distinctive green label.

The program features shall be accessed from the front of the indicator module. The program shall support self-diagnostics capabilities, self-calibration, and a datalink to connect remote indicators. Low foam warnings shall include flashing LEDs at 1/4 tank, down chasing LEDs when the tank is almost empty, and an output for an audio alarm.

The indicator shall receive an input signal from an electronic pressure sensor. The sensor shall be mounted from the outside of the foam tank near the bottom. No probe shall place on the interior of the tank. The foam tank vent shall be installed on the foam fill tower. Wiring shall be weather resistant and have automotive type plug-in connectors.

APPARATUS BODY AND COMPARTMENTATION:**ALUMINUM FLAT BED BODY**

An all aluminum flat deck (bed) body shall be furnished, at least 108" long by 94" wide, with: aluminum top deck, extruded aluminum channel transverse under-deck sub frame, extruded aluminum channel outboard perimeter frame, extruded aluminum longitudinal frame (chassis frame liner), and extruded tubular aluminum 36" high forward bulkhead. Lower level of flatbed shall be provided with four (4) each compartments with hinged doors. Compartments shall be provided in front and behind the rear axle. A wheelwell fender and lower rear panel shall be provided. The flat deck body shall be fastened to the chassis frame rails, using removable U-bolts, with barrier material between aluminum longitudinal frame and chassis steel frame rails.

A rear under-deck gravel shield (apron) shall be furnished, full width of flat deck body, designed for rear tail lighting. Gravel shield shall be fabricated of matching 4-way treadplate material with a rear step surface.

ENHANCEMENTS TO FLAT-DECK BODY**REAR WHEELMUD FLAPS, TWO (2) EACH**

Driver side and passenger's side rear under-body mudflaps shall be furnished, made of fabric reinforced neoprene rubber, bolted to the under-deck cross channels, using stainless steel strap brackets and bolts. Mudflaps shall extend to within 10" of ground level.

Rear mudflaps to be trimmed with polished stainless steel lower edge with the following characters laser cut into the metal and cutout areas backed with a reflective contrasting insert. Driver's side mudflap shall have the word "FIRE" with a flame image cutout and passenger's side mudflap shall have the word "RESCUE" with a rescue tool image cut-out.

ALUMINUM TREADPLATE COMPARTMENTS**HORIZONTAL COMPARTMENTS, WITH ROLL-UP DOORS**

Four (4) each, two (2) driver side and two (2) passenger side, fully enclosed horizontal compartments shall be furnished, fabricated of polished 4-way aluminum treadplate material. The compartments shall each be: 52" inside length, by 40" inside height, by 20" inside depth. Outside dimensions are 52" long 41" high driver side 15" passenger side 23" deep. Vents to be provided on front compartment floors.

The forward compartment and back compartment shall be integral, single piece construction, without middle bulkhead/wall. Interior compartment single piece floor shall be "sweep-out" design, with treadplate floor 1-inch higher than bottom door sill. Compartment surrounding door jambs.

Compartment doors, one (1) per compartment, shall be roll-up style.

ENHANCEMENTS TO COMPARTMENTS**12-VOLT INTERIOR COMPARTMENT LIGHTS**

Four (4) each, 12-volt, 5" diameter, interior compartment ceiling mounted lights shall be furnished. All lights shall be wired to a single activation switch, located in a customer designated position.

HOSE DONUT ROLL SLEEVE/POUCH

A fabricated 4-way aluminum treadplate fire hose donut roll "pouch" shall be furnished, bolted to inboard back side of specified upper level horizontal compartment. Pouch shall be designed to accommodate one (1) 50 ft. section of 1" or 1-1/2" double jacket collapsible fire hose, in a donut roll. Floor of pouch shall be sloped down towards front, with back "open" and equipped with a vinyl retainer strap with squeeze-snap connector.

POCKET HOLDER, FOR PISTOL GRIP NOZZLE - OPTIONAL

Three (3) each fabricated 4-way aluminum treadplate "pocket" style pistol-grip nozzle holders shall be furnished, with 2-bolt flanged mounting surface.

REAR TOW EYES, 2-EACH

Two (2), 4" x 3/4" thick steel tow eye plates shall be furnished, bolted to rear chassis frame rail end extensions, protruding through rear body panel, above tailboard. Tow eye holes to be at least 3" diameter to pass through a chain hook.

BACK BOARD SLEEVE COMPARTMENT

A fully enclosed backboard compartment shall be provided, located upper inboard rear corner of driver side compartmentation. Compartment shall include: overlapping bevel 4-way aluminum vertically hinged rear door with latch assembly and full body length smooth aluminum fabricated sleeve of adequate size to accommodate customers backboard with lower area to store flappers or shovels. Compartment sleeve to be perimeter flanged at rear, box construction extending from rear drivers body corner forward to allow proper storage.

Sleeve dimensions through opened rear access door, to be: 8" wide x 41" high x 107" front-to-rear (long).

TRAILER HITCH

A Class IV receiver type trailer hitch shall be installed at rear of apparatus and fastened directly to the under-body subframe. Hitch shall be rated not less than 750 lb. tongue weight/7500 lbs. rolling-load pull capacity. A weatherproof 7-way round, pin style, trailer connector (brake/stop/tail connection with trailer brake control wires only), and tail light converter shall be installed beside hitch receiver. A removable hitch flat bar tongue with machined hole shall be provided.

COMPARTMENT SHELVING

Three (3) each, compartment shelves shall be furnished, constructed of .125" thick 5052 aluminum sheet. Shelf perimeter flanges (4 each) shall be broke up 2". Each shelf shall have a load capacity of no less than 100 lbs. and shall be infinitely adjustable along vertical Quad-Rail tracks.

Each compartment shelf shall have two (2) angular clamp brackets bolted to under side shelf floor, four (4) aluminum heavy flat bar track clamps with threaded stainless steel carriage bolts and self-locking nuts, and mounting holes for the specified under shelf 12-volt interior compartment light fixture. Compartment shelves, shelf angular clamp brackets, and Quad-Rail track assemblies shall be unpainted "swirl-finish".

MOUNTING TRACKS

The specified shelving equipped compartments will include the necessary vertical mounting Quad-Rail (4-clamping surfaces per track) tracks, one track on each forward and back interior wall/bulkhead of the compartment. Mounting tracks shall accommodate future installed trays, shelves, and other track mounted optional accessories.

Quad-Rail tracks shall be bolted to, and easily removable from the specified vertical interior compartment surfaces, with back side (mating surface) of track assembly lined with dielectric barrier tape.

BRACKETS

Brackets mounted on upper left compartment for 2 lengths of 2.5" x 10 ft hard suction.

COMPARTMENT FLOORS AND SHELVING VINYL TILES

Turtle Tile brand or equivalent black section vinyl tiles shall be furnished, installed on top surface of all interior compartment compartment floors and horizontal shelves. Tiles shall be cut to size and shape of all floors and shelves.

WIRING HARNESESSES

All apparatus body and pump compartment wiring for specified lights and electrical equipment shall be suitably protected inside heat resistant vinyl, forming multiple harnesses. Multiple harnesses to run from chassis cab, pump enclosure, and apparatus body to a PDC (power distribution center). Harnesses shall consist of individual legend imprinted multi-stranded copper color coded SAE-J 1128 compliant automotive wires inside split-vinyl loom. Spare wires shall run throughout apparatus compartmented body and pump compartment, so as to allow future installations of electrical accessories, using original harnesses. All wiring to be identified, "imprinted" with number and function. Auto-reset circuit breakers to be furnished, of various amperage capacity, sized for intended load.

All 12-volt switches, relays, terminals, connectors, and wiring to have a direct current rating of 125% of maximum current for which the current is protected. All wiring terminals to be machine crimped, pull-tested during assembly.

POWER DISTRIBUTION CENTER

The power distribution center shall be a modular cabinet fabrication, containing 12-volt electric relays and devices necessary for proper operation of direct current electrical non-emergency and emergency lighting functions

BATTERY CABLE UPGRADE

A minimum 1-0 multi-stranded copper insulated battery cable shall run from specified battery switch to chassis frame mounted threaded stud terminal block, providing power to high amperage items such as priming motor, reel rewind motor, and engine starter.

ROCKER SWITCHES

Specified emergency lighting fixtures, non-emergency lighting fixtures, and electrical components shall be individually activated by fully illuminated rocker style switches. Emergency lighting switches to be illuminated, non-emergency switches to be illuminated a contrasting color. An illuminated switch shall be furnished to left of emergency lighting rocker switches, identified as "MASTER EMERGENCY SWITCH". Toggle switch to power individual emergency lighting switches. Back-lit nametags, describing function of each individual switch, to be located above toggle and rocker switches.

Controls and switches, which are expected to be operated by the driver while the apparatus is in motion, are to be within convenient reach of the driver. The controls to operate the siren to be within convenient reach of both driver and front passenger (officer).

VEHICLE SPECIFIC WIRING INFORMATION

"Vehicle Specific" wiring information shall be provided for this particular apparatus "as built" upon completed delivery of the same.

APPARATUS NON-EMERGENCY LIGHTING:

Apparatus to have sufficient lights to properly illuminate each enclosed tool and equipment compartment, work areas, steps and walkways. Lights shall be located to minimize accidental breakage.

All specified light fixtures to be located/fitted prior to and re-installed after finish painting. Where fixture wiring passes through metal body panel, the pass-thru hole to be equipped with a rubber grommet. All specified light fixtures shall be installed, using stainless steel screws with non-metallic "replaceable" threaded inserts (nuts), to allow removal of light fixture, from exterior of body. Where light fixtures are to be installed on a painted panel, all light fixture mounting holes, grommet holes, and fastener holes shall be machined/cut-out prior to prime and finish painting, so that all metal surfaces receive the same protective coating.

D.O.T. MARKER LIGHTS

Five (5), Truck-Lite 4" x 2" rectangular surface mount 12-volt dual bulb marker lights with snap-on reflective lenses to be furnished, located: two (2) recessed behind specified rear tailboard corner flanged bevels and three (3) recessed behind center rear tailboard flange, with diamond shape flange cut outs. Lenses to be Red. Marker lights to be activated by headlamp switch.

TAIL & STOP LIGHTS

Two (2), Whelen model 60X000RR, 5" x 8" rectangular chrome plated flange surface mount halogen combination stop/tail lights to be furnished, mounted each side at rear of body. Lenses to be 4" x 6", Red. Lights to be wired for activation by service brake and headlamp switch.

TURN LIGHTS

Two (2), Whelen model 60X000TR, 5" x 8" rectangular chrome plated flange surface mount halogen turn signal lights to be furnished, mounted one each side at rear of body. Lenses to be 4" x 6" Amber with left turn and right turn arrows. Lights to be wired for activation by left or right turn signal (not by brake lights).

BACK-UP LIGHTS

Two (2), Whelen model 60J000CR, 5" x 8" rectangular chrome plated flange surface mount halogen back up lights to be furnished, mounted one each side at rear of body. Lenses to be 4" x 6", Clear. Lights to be wired for activation by reverse gear of truck transmission.

Above specified lights to incorporate the Whelen model 6E flanges and be bolted in position, evenly spaced, driver's side and passenger's side rear body corners.

BACK-UP ALARM

One (1), 12-volt electronic back-up alarm to be furnished, mounted at rear below body, activated by reverse gear of truck transmission.

UNDER BODY LIGHTING

Six (6), TruckLite model 918540003, 4" round under body 12-volt ground lights to be furnished, located: three (3) each, driver's side, two (2) ahead of and one (1) behind rear wheels, three (3) each passenger's

side, two (2) ahead of and one (1) behind rear wheels. Lights to be completely sealed for weather resistance, lenses to be 4" diameter Clear. Lights to be activated by **center console mounted switch**.

COMPARTMENT LIGHTS

Up to ten (10), Truck-Lite model 80351, 6" round chrome plated surface mount 12-volt compartment lights to be furnished, located on ceiling of all enclosed compartments and under-side of each specified individual permanent and adjustable compartment shelf. Lenses to be 5" diameter, clear. Ceiling and under shelf lights to be activated by a single electrical console mounted illuminated rocker switch, identified as "**COMPARTMENT LIGHTS**". Wiring for under shelf lights to include quick-disconnect electrical connections to facilitate shelf removal.

FRC OPTIMUM 12-VOLT 150W BOTTOM RAISE LIGHTS

Two (2), Fire Research model OPA530-H15, 12-volt, 150-watt HID lights with telescoping poles and side mount brackets shall be furnished. Lights shall be wired to 12-volt electrical system, and equipped with light head mounted (or remote illuminated, must specify) switches, one for each light head.

Lights shall be mounted on front body compartment corners. If possible

APPARATUS OPTICAL AND AUDIBLE WARNING DEVICES

LIGHT PACKAGE ACTUATION CONTROLS

The entire warning light package shall be actuated with a single master warning switch in the cab switch panel. The wiring for the warning light package will engage all of the lights required for "Clearing Right of Way" mode when the vehicle parking brake is not engaged. An automatic control system will be provided to switch the warning lights to the "Blocking the Right of Way" mode when the vehicle parking brake is engaged.

GRILLE WARNING LIGHTS - LED

Two (2), Whelen 500 series, TIR Super LED, 5" x 1-5/8" rectangular surface mount LED lightheads and two (2) 5EFLANGE chrome plated surrounds to be furnished, surface mounted located on front grille. Light lenses to be 5" wide x 1-5/8" high, driver's Red, passenger's side Red. Lights to be activated by a separate illuminated rocker switch, identified by function.

INTERSECT LED WARNING LIGHTS

Two (2), Whelen 500 series, TIR Super LED, 5" x 1-5/8" rectangular surface mount LED lightheads and two (2) 5EFLANGE chrome plated surrounds to be furnished, surface mounted located driver and passenger front bumper sides or hood/cab sides. Light lenses to be 5" wide x 1-5/8" high, driver's Red, passenger's side Red. Lights to be activated by a separate illuminated rocker switch, identified by function.

LIGHTBAR

One (1ea) Whelen model FN55VLED 55" long NFAP approved LED lightbar shall be furnished and installed, mounted to chassis roof with individual back-lit rocker style switch at 12V emergency light console. Lightbar to include four (4) front LED (two Red and two White) modules and clear lenses: Activation of Parking Brake shall disengage any Forward Facing clear lights.

ELECTRONIC SIREN

One (1), Code 3 model 3692, electronic siren amplifier to be furnished, surface mounted to the specified

electrical console. A built-in microphone to be furnished with coil cord and mounting clip. Siren amplifier to be wired to the specified electronic siren speaker(s).

SPEAKER

One (1), Code 3 PSE-Z100, 100-watt rectangular concealed speaker to be furnished, located recessed behind front bumper. Vertical surface of front bumper to be "cut-out", back side (between bumper and speaker) furnished with polished stainless steel speaker grille. Where appropriate, back side of speaker shall have boxed aluminum protective enclosure.

REAR / REAR SIDE FLASHERS - UPPER

Eight (8), Whelen 500 series TIR6, 1-5/8" x 5" rectangular flush mounted emergency Super-LED lights complete with associated 5TSMAC flanges to be furnished, located two (2) driver's side upper and lower rear body corner sides, two (2) passenger's side upper and lower rear body corner sides, and four (4) on rear surface of body corners; two (2) driver's side and two (2) passenger's side, (as close to top and bottom as practical). Light lens to be all Red and activated by a single illuminated rocker switch, identified as "UPPER LEVEL FLASHERS".

EMERGENCY RADIO

Customer provided mobile radio will be installed by manufacturer.

ACCESSORIES

2 lengths 2.5" x 10 ft. hard suction. (Storz thread optional).

Pump intake 2.5" Storz option if hard suction Storz coupling.

(2) 2.5" male X 2.5" Storz option if hard suction Storz coupling.

(2) 2.5" female X 2.5" Storz option if hard suction Storz coupling.

FINAL DELIVERY

Final delivery of the completed apparatus shall be made via drive-away F.O.B. Fire Department Headquarters, at which time Fire Department personnel shall be instructed as to the proper use of the fire pump systems, as well as component systems by a Factory Representative. Factory training shall include intensive fire pump training session by a delivery engineer with extensive experience giving such sessions.

The Purchaser shall make all housing arrangements for the Delivery Engineer and provide him/her with transportation to and from lodging and nearest available airport or rental car agency (if it applies). The cost of all housing and other living expenses are to be paid for by the Delivery Engineer.

MOUNTAIN IRON FIRE DEPARTMENT
GRASS / BRUSH FIRES 2003 – PRESENT

2003

4/04	MN Power substation –	grass	1 hr
4/12	Butler Rd –	grass / brush	2 hr
4/23	169 & 102	grass	1 hr
4/27	Minntac	grass	2 hr
5/03	Raintree North West side	grass/brush/fort	2 hr
5/17	Prindle Rd	Wildland	3 hr
6/01	Hwy 101 & 7	grass	1 hr
6/05	Hwy 101 & 7	vehicle / grass	1 hr
6/11	Raintree North West side	brush	1 hr
6/12	Mud Lk Rd	grass	2 hr
6/20	Mud Lk Rd	grass	2 hr
7/03	169 & Enterprise	grass/brush	2 hr
7/25	Mud Lk Rd	grass/structure/brush	3 hr
7/31	Hwy 101 & 7	grass/barn	1 hr
8/16	United Elec. North side	grass/brush	2 hr
9/12	Marigold East end	grass/brush/trash	2 hr

2004

5/04	169 & Enterprise	grass/brush	1 hr
6/16	Landfill	perimeter coverage	1 hr
8/14	Spirit Lk Rd	grass/brush	1 hr
10/25	Hwy 101 & 7	grass	1 hr
11/25	Hwy 169	structure assist	6 hr

2005

4/07	Hwy 169 & Campground	grass	1 hr
4/13	Minntac	grass	2 hr
6/27	Hwy 169 & Campground	grass	1 hr
7/02	Landfill	perimeter coverage	6 hr
9/10	Hwy 101 & 7	grass	1 hr
10/11	Bluebell Ave	grass	1 hr
11/5	Quadcity Recycling	grass/material	4 hr
11/13	North Ct.	tree / power	1 hr

MOUNTAIN IRON FIRE DEPARTMENT
GRASS / BRUSH FIRES 2003 – PRESENT

2006

3/23	Hwy 169 & Mineral	grass	3 hr
4/09	Locomotive	brush	2 hr
4/15	Raintree	grass / brush	1 hr
4/30	Mott Pitt	grass / brush	2 hr
5/31	Hwy 101	brush	1 hr
6/09	Hwy 101 near Kendall Lk	grass	1 hr
7/10	Mineral & Butler	grass	1 hr
7/23	N. Enterprise	tree / powerline	2 hr
7/30	Enterprise and Unity	grass	2 hr
7/31	Multiple locations Parkville	trees / powerlines	3 hr
9/05	Hwy 101 & 7	wildland	9 hr
9/06	Hwy 101 & 7	wildland	14 hr
9/07	Hwy 101 & 7	wildland	12 hr
9/30	Hwy 169	brush	1 hr
10/09	Spirit Lk Rd	grass	1 hr
10/09	Landfill	perimeter coverage	5 hr
10/13	Mineral Ave	tree burning	1 hr
10/28	Voss Rd	Grass / brush	3 hr
10/30	Spirit Lk Rd	tree burning	2 hr

2007

3/03	Plaza 53 West side	grass	1 hr
3/25	Hwy 169 & Mineral	transformer burning	2 hr
4/30	Mott Pitt	grass / brush	2 hr
5/10	Allavus Rd	wildland / structure	7 hr
5/21	Labrador Rd	brush	1 hr
5/22	Hwy 53 MP & L substation	brush / grass	2 hr
6/07	Butler Rd & Luoma Lane	tree burning	2 hr
6/16	Mud Lk Rd	tree burning	1 hr
8/10	Mott Pitt	brush	1 hr
9/01	Comfort Pt	structure wildland	4 hr
9/07	Old Hwy 169	grass / brush	2 hr

2008

4/19	Mud Lk Rd	structure / grass	6 hr
4/20	Mud Lk Rd	grass	2 hr
5/17	Main St West end	brush	1 hr
5/21	CN Railway	grass / brush	2 hr
5/28	Sheldon Jct. Rd	brush	2 hr
6/18	Oriole Ave	brush	1 hr
6/20	Mineral Ave near GE	grass / brush	1 hr

MT. IRON FIREMENS RELIEF
 2008 - 2011 Projection

	2007	2008	2009	2010	2011
	ACTUAL	PROJECTED			
SPECIAL FUND ASSETS 1/1/XX	313202	323367	271692	310092	352442
MN STATE AID	12181	12500	13000	13500	14000
CITY CONTRIBUTION (10,800 since 2002)	10800	10800	10800	10800	10800
DUES	265	225	250	250	250
EXPENSES	-2175	-2200	-2150	-2200	-2300
INTEREST/DIVIDENDS (5%)	13820	16000	14000	15000	16000
MARKET ADJUSTMENT	7274	-25000	2500	5000	7500
RETIREMENT PAYOUTS	32000	64000	0	0	0
SPECIAL FUND ASSETS 12/31/XX	323367	271692	310092	352442	398692
PENSION LIABILITY	268256	224842	262188	311182	361440
SURPLUS / (DEFICIT)	55111	46850	47904	41260	37252
RETIREMENT BENEFIT	1600	1700	1800	1900	2000
AVERAGE FUNDING / MEMBER	1472	1866	1588	1421	1426
3 YEAR AVERAGE	1399	1448	1614	1625	1479
MAXIMUM	2500	2600	2900	3000	2700

Fire Department

From: Steve Jarvi [sjarvi@wghcpas.com]
Sent: Thursday, October 09, 2008 10:16 AM
To: Fire Department
Subject: Mtlron projections 2008-2011.XLS
Attachments: Mtlron projections 2008-2011.XLS

Tom,

Here is the revised projection.

\$1700 currently and \$100 / yr increase.

I also made some adjustments to the market value (negative) for 2008 and projected some recovery for the next 3 years.

the surplus in any case stays around \$40,000 which is > 10%.

The number of firefighters are 15 - 2008 (as of 7/1), 18 - 2009 and 20 in 2010 and 2011.

Steve

10/27/2008

COUNCIL LETTER 110308-VA

ADMINISTRATION

MOUNTAIN MANOR

DATE: October 29, 2008
FROM: Craig J. Wainio
City Administrator

On September 9th bids were received and opened for the conversion of 3 one bed room apartments into 2 two bedroom apartments at Mountain Manor. Low bid on the project was H.G. Harvey Constructors in the amount of \$86,900. CDBG has provided grant funding to complete this project in the amount of \$30,000 with the City committed to provide a match of \$30,000. Bid costs came in higher than originally expected when the grant application was submitted.

As requested by the City Council staff has reviewed the options with regard to this project and found that we can cut roughly \$5,000 from the project, that the facility could fund \$15,000 of the project, therefore the City would be responsible for \$36,900 and CDBG will cover the \$30,000 they have committed.

Staff recommends moving forward with this project as outlined above. If the City Council agrees to move forward with this project please award the bid to HG Harvey Constructors of Eveleth.



**A R C H I T E C T U R A L
R E S O U R C E S • I N C .**

ARCHITECTURE • ENGINEERING • LANDSCAPE ARCHITECTURE • INTERIOR DESIGN

**• BID TABULATION •
MOUNTAIN MANOR APARTMENT REMODEL
ARI Project # 08-068**

Bid Date & Time: Tuesday, September 9, 2008, @ 10:00 a.m. local time

Contractor	Base Bid	Comp Time	Mechanical Contractor / \$	Electrical Contractor / \$	Add Ack	Bid Sec
H. G. Harvey Constructors, Inc.	\$86,900.00	90 days	Radotich - \$16,925.00	Nelson-Collie - \$11,900.00	1,2	5%
T&M Construction, Inc.	\$87,400.00	120 days	Radotich - \$16,000.00	Nelson-Collie - \$11,900.00	2	5%
Max Gray Construction, Inc.	\$88,400.00	75 days	Anderson - \$17,313.00	Nelson-Collie - \$11,900.00	1,2	5%
Lenci Enterprises, Inc.	\$91,600.00	75 days	Radotich - \$16,925.00	Nelson-Collie - \$11,900.00	1,2	5%
Oscar J. Boldt Construction	\$119,800.00	90 days	Klamm - \$19,400.00	Lanyk Electric - \$16,500.00	1,2	5%
Johnson Wilson Constructors, Inc.	\$121,000.00	90 days	Klamm - \$19,400.00	Nelson-Collie - \$11,900.00	1,2	5%

704 EAST HOWARD STREET • HIBBING, MN 55746
TEL 218-263-6868 • FAX 218-722-6803
email:archres@arima.com • web site:www.arima.com

RESOLUTION NUMBER 52-08

ADOPTING ASSESSMENT

WHEREAS, pursuant to proper notice duly given as required by law, the City Council has met and heard and passed upon all objections to the proposed assessment for Improvement Number MI07-2, the improvement of Park Ridge Drive from Nichols Avenue to the east edge of Park Ridge Plat in by reconstruction.

NOW THEREFORE, BE IT RESOLVED BY THE CITY COUNCIL OF MOUNTAIN IRON, MINNESOTA:

1. Such proposed assessment, a copy of which is attached hereto and made a part hereof, is hereby accepted and shall constitute the special assessment against the lands named therein, and each tract of land therein included is hereby found to be benefited by the proposed improvement in the amount of the assessment levied against it.
2. Such assessment shall be payable in equal annual installments extending over a period of ten years, the first of the installments to be payable on or before the first Monday in January 2009, and shall bear interest at the rate of eight percent per annum from the date of the adoption of this assessment Resolution. To the first installment shall be added interest on the entire assessment from the date of this Resolution until December 31, 2008. To each subsequent installment, when due, shall be added interest for one year on all unpaid installments.
3. The owner of any property so assessed may, at any time prior to certification of the assessment to the county auditor, pay the whole of the assessment on such property, with interest accrued to the date of payment, to the city treasurer, except that no interest shall be charged if the entire assessment is paid within 30 days from the adoption of this Resolution; and he/she may, at any time thereafter, pay to the city treasurer the entire amount of the assessment remaining unpaid, with interest accrued to December 31 of the year in which such payment is made. Such payment must be made before November 15 or interest will be charged through December 31 of the next succeeding year.
4. The City Administrator shall forthwith transmit a certified duplicate of this assessment to the County Auditor to be extended on the property tax lists of the County. Such assessments shall be collected and paid over in the same manner as other municipal taxes.

DULY ADOPTED BY THE CITY COUNCIL THIS 3rd DAY OF NOVEMBER, 2008.

ATTEST:

Mayor Gary Skalko

City Administrator

RESOLUTION NUMBER 53-08

ADOPTING ASSESSMENT

WHEREAS, pursuant to proper notice duly given as required by law, the City Council has met and heard and passed upon all objections to the proposed assessment for Improvement Number MI06-10, the improvement of Unity Drive from Mud Lake Road to Diamond Lane by overlayment, reconstruction and installation of curb, gutter and sidewalk.

NOW THEREFORE, BE IT RESOLVED BY THE CITY COUNCIL OF MOUNTAIN IRON, MINNESOTA:

1. Such proposed assessment, a copy of which is attached hereto and made a part hereof, is hereby accepted and shall constitute the special assessment against the lands named therein, and each tract of land therein included is hereby found to be benefited by the proposed improvement in the amount of the assessment levied against it.
2. Such assessment shall be payable in equal annual installments extending over a period of ten years, the first of the installments to be payable on or before the first Monday in January 2009, and shall bear interest at the rate of eight percent per annum from the date of the adoption of this assessment Resolution. To the first installment shall be added interest on the entire assessment from the date of this Resolution until December 31, 2008. To each subsequent installment, when due, shall be added interest for one year on all unpaid installments.
3. The owner of any property so assessed may, at any time prior to certification of the assessment to the county auditor, pay the whole of the assessment on such property, with interest accrued to the date of payment, to the city treasurer, except that no interest shall be charged if the entire assessment is paid within 30 days from the adoption of this Resolution; and he/she may, at any time thereafter, pay to the city treasurer the entire amount of the assessment remaining unpaid, with interest accrued to December 31 of the year in which such payment is made. Such payment must be made before November 15 or interest will be charged through December 31 of the next succeeding year.
4. The City Administrator shall forthwith transmit a certified duplicate of this assessment to the County Auditor to be extended on the property tax lists of the County. Such assessments shall be collected and paid over in the same manner as other municipal taxes.

DULY ADOPTED BY THE CITY COUNCIL THIS 3rd DAY OF NOVEMBER, 2008.

ATTEST:

Mayor Gary Skalko

City Administrator

RESOLUTION NUMBER 54-08

ADOPTING ASSESSMENT

WHEREAS, pursuant to proper notice duly given as required by law, the City Council has met and heard and passed upon all objections to the proposed assessment for Improvement Number MI08-20, the improvement of Unity Drive between the Northwest corner of Section 14 to approximately 250 feet east of the Northwest corner of Section 14, T58M, R18W by construction.

NOW THEREFORE, BE IT RESOLVED BY THE CITY COUNCIL OF MOUNTAIN IRON, MINNESOTA:

1. Such proposed assessment, a copy of which is attached hereto and made a part hereof, is hereby accepted and shall constitute the special assessment against the lands named therein, and each tract of land therein included is hereby found to be benefited by the proposed improvement in the amount of the assessment levied against it.
2. Such assessment shall be payable in equal annual installments extending over a period of ten years, the first of the installments to be payable on or before the first Monday in January 2009, and shall bear interest at the rate of eight percent per annum from the date of the adoption of this assessment Resolution. To the first installment shall be added interest on the entire assessment from the date of this Resolution until December 31, 2008. To each subsequent installment, when due, shall be added interest for one year on all unpaid installments.
3. The owner of any property so assessed may, at any time prior to certification of the assessment to the county auditor, pay the whole of the assessment on such property, with interest accrued to the date of payment, to the city treasurer, except that no interest shall be charged if the entire assessment is paid within 30 days from the adoption of this Resolution; and he/she may, at any time thereafter, pay to the city treasurer the entire amount of the assessment remaining unpaid, with interest accrued to December 31 of the year in which such payment is made. Such payment must be made before November 15 or interest will be charged through December 31 of the next succeeding year.
4. The City Administrator shall forthwith transmit a certified duplicate of this assessment to the County Auditor to be extended on the property tax lists of the County. Such assessments shall be collected and paid over in the same manner as other municipal taxes.

DULY ADOPTED BY THE CITY COUNCIL THIS 3rd DAY OF NOVEMBER, 2008.

ATTEST:

Mayor Gary Skalko

City Administrator

COUNCIL LETTER 110308-VID

ADMINISTRATION

LAND PURCHASE REQUEST

DATE: October 29, 2008

FROM: Craig J. Wainio
City Administrator

Enclosed, please find a letter from Prudential Northland Realty regarding two parcels of property the City owns between 16th Avenue and Highway 53. The majority of the property outlined in the request lies beneath the Highway 53 right-of-way and the remaining property is of such size as to make in unusable under the current Zoning regulations. It is staffs opinion that this property is of no value to the City and the request as presented should be granted. Normally in a situation like this the City would charge \$200 or \$300 for the parcel which would cover our legal, engineering and recording costs, in this scenario the purchaser would cover those costs.

It is recommended that the City Council adopt the enclosed resolution authorizing the sale of property.



Prudential

Northland Realty

A division of Truett REALTORS INC®

October 22, 2008

Mr. Craig Waino
City Administrator
City of Mt. Iron

RE: **Lot 13 & 14 Block 8**
West Virginia Mt. Iron
Request to Purchase

Mr. Wainio:

Per our recent phone conversation, I would like to formally submit a request to the City of Mountain Iron to acquire the two lots that currently are adjacent to the property in which my clients currently are negotiating an offer to purchase.

As you will note from the attached maps, these lots are very small and have absolutely no value on their own. By combining them with the adjacent lots, it will enhance the potential for my clients to commence with their offer to purchase of the adjacent property. It will add to the square footage and be potentially beneficial to our acquisition.

I would request that the City sell these 2 lots for \$1 and my clients would assume the costs to transfer said property. There would not be a cost to the City of Mt. Iron.

I look forward to your response. If you have any questions in this matter, feel free to give me a call.

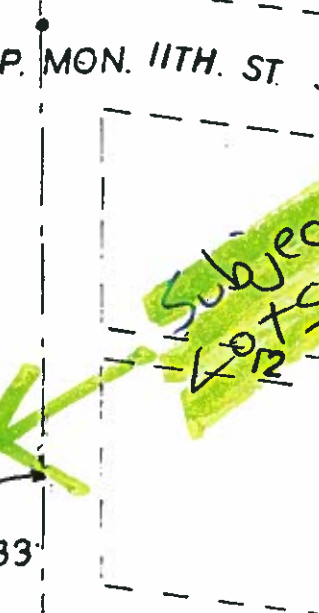
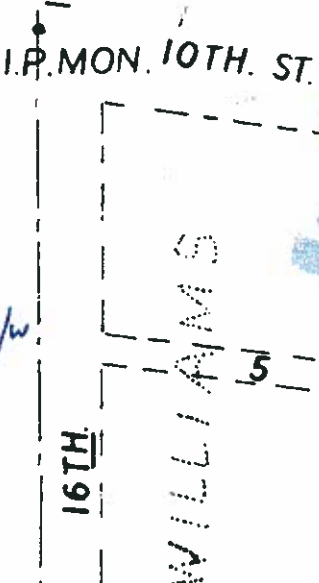
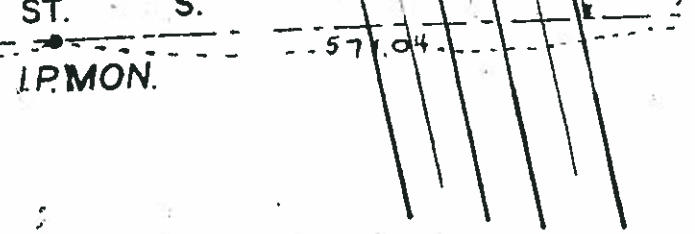
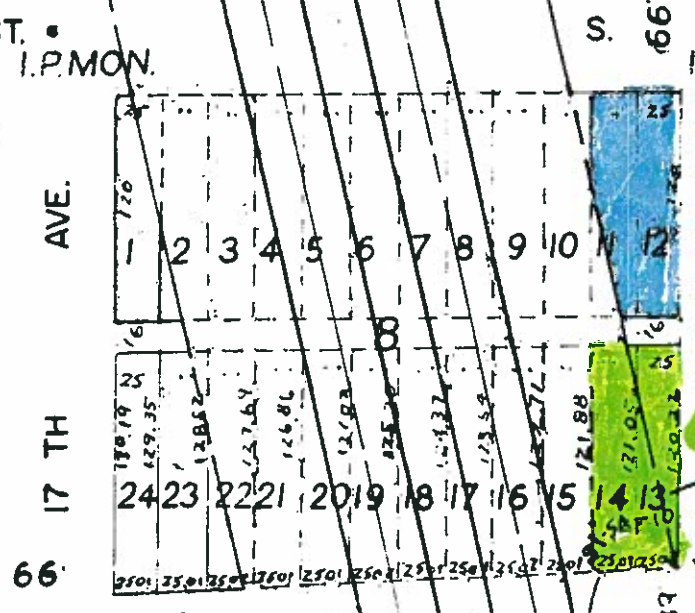
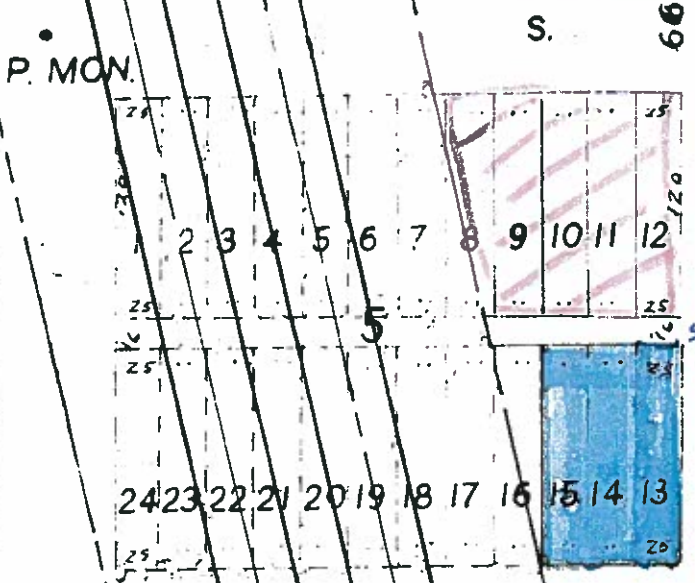
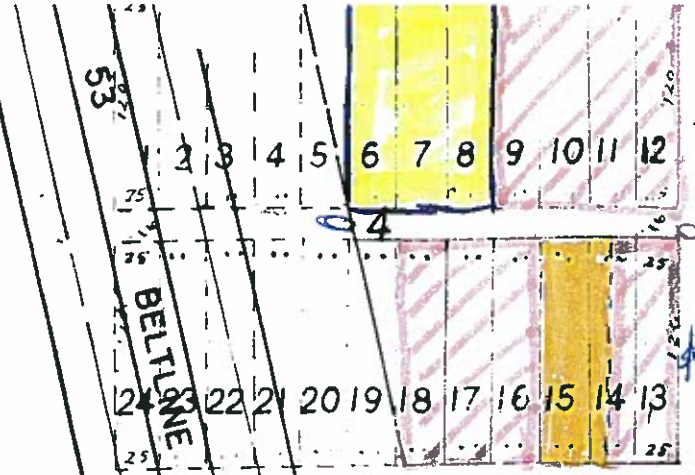
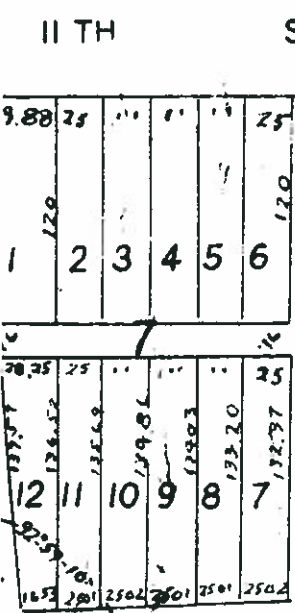
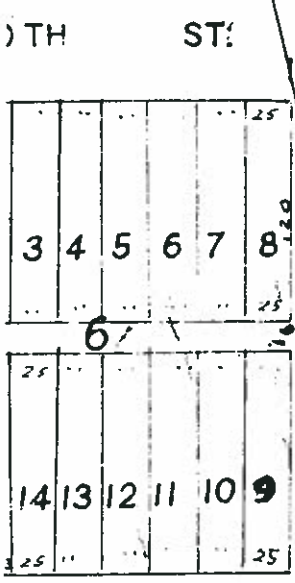
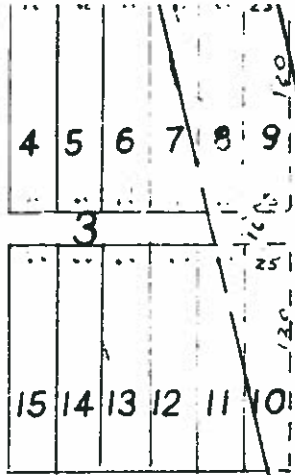
Sincerely,

Darin Alto – Realtor
Associate Broker
Prudential Northland Realty

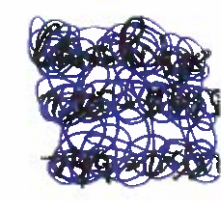
Duluth
1401 Sundby Rd
Duluth MN 55811
(218) 726-1255

Virginia
1401 S 12th Ave Ste 5
Thunderbird Mail
Virginia MN 55777
(218) 741-9022

Superior
Board of Trade Bldg
Superior WI 54880
(715) 395-2411



RAMSEY
LOTS



Pettinelli
Tammara

Klabunde

Subject
Lots
12

Maps



Disclaimer: These maps and directions are informational only. No representation is made or warranty given as to their content, road conditions or route usability or expeditiousness. User assumes all risk of use. YELLOWPAGES.COM and its suppliers assume no responsibility for any loss or delay resulting from such use.

Part of the new  at&t

© 2008 YELLOWPAGES.COM LLC. All rights reserved.

© 2008 AT&T Intellectual Property. All rights reserved. AT&T, AT&T logo and all other marks contained herein are trademarks of AT&T Intellectual Property and/or AT&T affiliated companies.

Some data provided by [Localeze](#) and [Acxiom](#).

RESOLUTION NUMBER ____ -08

AUTHORIZING THE SALE OF CERTAIN PROPERTY

WHEREAS, the City Council has heretofore determined that it is beneficial to the City of Mountain Iron to convey certain property.

NOW, THEREFORE BE IT RESOLVED BY THE CITY COUNCIL OF MOUNTAIN IRON, MINNESOTA that the Mayor and City Administrator, upon receipt of payment, execute the deed to convey real property in St. Louis County, Minnesota, described as follows:

Lots 13 and 14 Block 8 of WEST VIRGINIA on file at the St. Louis County Recorder's Office, located in the Northeast Quarter of the Northeast Quarter Section 13, Township 58 North, Range 18 West of the Fourth Principal Meridian, City of Mountain Iron, St. Louis County, Minnesota.

Subject, however, to all existing interests, including but not limited to all reservations, rights-of-way and easements of record or otherwise.

DULY ADOPTED BY THE CITY COUNCIL THIS 3rd DAY OF NOVEMBER, 2008.

Mayor Gary Skalko

ATTEST:

City Administrator

COUNCIL LETTER 110308-0000

ED ROSKOSKI

STREET LIGHT REQUEST

DATE: October 29, 2008

FROM: Ed Roskoski
City Councilor

Craig J. Wainio
City Administrator

Councilor Roskoski requested this item be placed on the agenda with this background information:

Several people on Spirit Lake Road/County #137 by the Spirit Lake housing area are requesting 2 or 3 street lights along that area. None are present now.

COMMUNICATIONS
NOVEMBER 3, 2008

1. Laurentian Chamber of Commerce, a thank you for the \$2,500 commitment in 2008 and a request to consider the same contribution in 2009.



Virginia, Eveleth, Mt. Iron, Gilbert and surrounding business communities
403 First Street North
Virginia, MN 55792
(218) 741-2717 (218) 749-4913 Fax

Mayor Gary Skalko
8586 Enterprise Drive South
Mountain Iron, MN 55768

October 22, 2008

Dear Mayor and Councilors,

On behalf of the Laurentian Chamber Board of Directors, thank you to the City of Mountain Iron for your \$2500.00 financial commitment in 2008 toward the operation of Mineview in the Sky Travel Information Center. Mineview continues to be a popular destination for new and returning visitors to the area.

Nearly 13,000 people visited Mineview this year and patronized our Quad cities from all areas of the state and country, as well as international locations. With your continued partnership we will continue to operate the Center and provide a wide variety of information, history, literature, and education about our unique area. Per your request earlier this year, we will be rewording the welcome sign to read the Quad Cities.

As you consider your 2009 operating budget the chamber does not seek any increase. We are hopeful you will retain the same 2008 seasonal appropriation of \$2500.00

We are grateful for your consideration.

Respectfully,

Jim Currie
President & CEO