

**MOUNTAIN IRON CITY COUNCIL MEETING
COMMUNITY CENTER
MOUNTAIN IRON ROOM
MONDAY, AUGUST 5, 2013 - 6:30 P.M.
A G E N D A**

- I. Roll Call
- II. Consent Agenda
 - A. July 15, 2013, Regular Meeting (#1-7)
 - B. Receipts
 - C. Bills and Payroll
 - D. Communications (#32-49)
- III. Public Forum
- IV. Committee and Staff Reports
 - A. Mayor's Report
 - B. City Administrator's Report
 - 1. Award Quote for Painting (#8-10)
 - C. Public Works Director's Report
 - D. Library Directors Report
 - 1. Authorization to Close Street for Merritt Days (#11)
 - E. Sheriff's Department Report
 - F. City Engineer's Report
 - G. Parks and Recreation Board
 - 1. KCPRO Ice Racing (#12-15)
 - H. Public Health and Safety Board
 - 1. Assistant Fire Chief Position Analysis (#16-17)
 - 2. Authorization to Post Captains Position
 - 3. Authorization to Advertise for EMT and Firefighters
 - I. Liaison Reports
- V. Unfinished Business
- VI. New Business
 - A. Resolution Number 24-13 Accepting Work (#18-19)
 - B. Resolution Number 25-13 Accepting Work (#20-21)
 - C. Resolution Number 26-13 Calling for a Hearing on Vacation (#22-28)
 - D. Special Events Permit (#29-30)
 - E. Request to Serve Alcohol at Community Center (#31)
- VII. Communications (#32-49)
- VIII. Announcements
- IX. Adjourn

MINUTES
MOUNTAIN IRON CITY COUNCIL
JULY 15, 2013

Mayor Skalko called the City Council meeting to order at 6:30 p.m. with the following members present: Joe Prebeg, Jr., Susan Tuomela, Alan Stanaway, and Mayor Gary Skalko. Absent member included: Tony Zupancich. Also present were: Craig J. Wainio, City Administrator; Jill M. Clark, Municipal Services Secretary; Rod Flannigan, City Engineer; Michael Downs, Director of Public Works; John Backman, Sergeant; and Brian Lindsay, City Attorney.

It was moved by Skalko and seconded by Tuomela that the consent agenda be approved as follows:

1. Approve the minutes of the July 1, 2013, regular meeting as submitted.
2. That the communications be accepted and placed on file and those requiring further action by the City Council be acted upon during their proper sequence on the agenda.
3. To acknowledge the receipts for the period July 1-15, 2013, totaling \$1,090,788.40, (a list is attached and made a part of these minutes).
4. To authorize the payments of the bills and payroll for the period July 1-15, 2013, totaling \$535,171.18, (a list is attached and made a part of these minutes).

The motion carried on the following roll call vote: Prebeg, yes; Zupancich, absent; Stanaway, yes; Tuomela, yes; and Skalko, yes.

During the public forum, Elizabeth Wefel, Coalition of Greater Minnesota Cities, presented a report on the Coalitions activities over the previous year.

The Mayor reported on the following:

- Wal-Mart. He said that the site preparation work had started at Rock Ridge Development for Wal-Mart Superstore.
- K & L Auto Sales. He welcomed the new business that sells pre-driven vehicle to Mountain Iron. He said that they are located at the intersection of County Road 7 and Unity Drive.
- Hometown Focus. He announced the development of a new article to appear in the newspaper. He said the "Happenings in Mountain Iron" will begin soon. He requested that anyone wanting to submit information for the newspaper article, turn them into the City Administrator or the Mayor.

The City Administrator reported on the following:

- Baseball Program. He said that the season is almost over. He said that the City will be hosting the Majors Tournament in South Grove next week.

The Director of Public Works said that the following quotes were received for dust control material:

Envirotech Services, Inc.	6900 @ \$0.79 per gallon	\$5,451.00
Edwards Oil/Trimark Ind.	6900 @ \$0.743 per gallon	\$5,126.70

It was moved by Tuomela and seconded by Prebeg to award the quote for dust control material to Edwards Oil/Trimark Industrial at their low quote of 6900 gallons at \$0.743 per gallon. The motion carried on the following roll call vote: Stanaway, yes; Tuomela, yes; Prebeg, yes; Zupancich, absent; and Skalko, abstain.

It was moved by Stanaway and seconded by Tuomela to adopt Resolution Number 22-13, awarding bids for the construction of Unity Drive between South Grove and Unity Second Addition to Hibbing Excavating Incorporated with a bid of \$586,445.50, (a copy is attached and made a part of these minutes). The motion carried on the following roll call vote: Tuomela, yes; Prebeg, yes; Zupancich, absent; Stanaway, yes; and Skalko, yes.

It was moved by Stanaway and seconded by Prebeg to adopt Resolution Number 23-13, calling for bids for sidewalk improvements on Main Street, Mountain Avenue, and Mud Lake Road to Enterprise Drive South, (a copy is attached and made a part of these minutes). The motion carried with Zupancich absent.

It was moved by Prebeg and seconded by Tuomela to authorize the annual allocation to the Laurentian Chamber of Commerce for the Mineview in the Sky in the amount of \$2,500.00. The motion carried on the following roll call vote: Prebeg, yes; Zupancich, absent; Stanaway, yes; Tuomela, yes; and Skalko, yes.

The Council reviewed the Communication from Saint Louis County regarding the apportionment received for the wind energy in Mountain Iron in the amount of \$15,148.80.

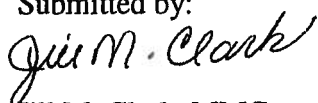
At 7:03 p.m., it was moved by Prebeg and seconded by Tuomela to recess the regular meeting and enter into a closed session to discuss management negotiations. The motion carried with Zupancich absent.

The closed meeting was called to order at 7:08 p.m. by Mayor Skalko with the following members present: Joe Prebeg, Jr., Susan Tuomela, Alan Stanaway, and Mayor Gary Skalko. Absent member included: Tony Zupancich. Also present were: Craig J. Wainio, City Administrator; and Brian Lindsay, City Attorney.

It was moved by Stanaway and seconded by Tuomela to adjourn the closed session and reconvene the regular meeting. The motion carried with Zupancich absent.

At 7:30 p.m., it was moved by Skalko and seconded by Prebeg that the meeting be adjourned. The motion carried with Zupancich absent.

Submitted by:



Jill M. Clark, MMC
Municipal Services Secretary

www.mtniron.com

Summary By Category And Distribution

Category	Distribution	Amount
MISCELLANEOUS	BLUE CROSS/BLUE SHIELD PAYABLE	294.91
UTILITY	UTILITY	176,432.91
CAMPGROUND RECEIPTS	FEES	5,830.00
CAMPGROUND RECEIPTS	CREDIT CARD FEES	46.80
CHARGE FOR SERVICES	REFUSE REMOVAL-CHG FOR SERVICE	925.87
PERMITS	BUILDING	61,208.52
FINES	ADMINISTRATIVE OFFENSE	150.00
METER DEPOSITS	ELECTRIC	800.00
BUILDING RENTALS	COMMUNITY CENTER	25.00
BUILDING RENTALS	BUILDING RENTAL DEPOSITS	400.00
SPECIAL ASSESSMENTS	SPECIAL ASSESS.-BOND MONEY	256.63
SPECIAL ASSESSMENTS	INTEREST-SP.ASSESS.-BONDS ISSU	10.46
CHARGE FOR SERVICES	ELECTRIC-CHG FOR SERVICES	642.25
BUILDING RENTALS	SENIOR CENTER	50.00
MISCELLANEOUS	ASSESSMENT SEARCHES	40.00
CD INTEREST	CD INTEREST 101	822.50
CD INTEREST	CD INTEREST 378	2,001.86
CD INTEREST	CD INTEREST 602	706.99
CD INTEREST	CD INTEREST 603	690.54
CD INTEREST	CD INTEREST 604	1,145.86
TAXES	TAX LEVY	563,202.87
TAXES	TAXES RECEIVABLE-DELINQUENT	3,715.77
TAXES	MISCELLANEOUS TAXES	21,244.29
TAXES	PENALTIES & INTEREST	129.45
TAXES	PENALTIES & INTEREST-378 FUND	163.78
TAXES	SPEC. ASSMTS-378 FUND-CURRENT	18,184.17
TAXES	SPEC ASSESS-FUND 378-DELINQUEN	609.57
TAXES	TIF #14 INCREMENT COLLECTED	39,409.65
TAXES	BOND LEVY	190,117.33
MISCELLANEOUS	SPECIAL EVENT PROCEEDS	300.00
MISCELLANEOUS	CHARITABLE GAMBLING PROCEEDS	875.70
BUILDING RENTALS	NICHOLS HALL	25.00
MISCELLANEOUS	FAX CHARGES	3.00
CD INTEREST	CD INTEREST601	323.72
COPIES	COPIES	3.00
Summary Totals:		1,090,788.40

Check Issue Date(s): 07/15/2013 - 07/16/2013

Per	Date	Check No	Vendor No	Payee	Check GL Acct	Amount
07/13	07/16/2013	144062	10064	A B E ENVIRONMENTAL SYSTEMS	101-20200	13,251.95
07/13	07/16/2013	144063	10056	A T & T MOBILITY	101-20200	1,072.32
07/13	07/16/2013	144064	10070	A-1 RENTAL SERVICES INC	101-20200	1,002.08
07/13	07/16/2013	144065	10055	ALTEC INDUSTRIES INC	604-20200	185.77
07/13	07/16/2013	144066	10019	ARMORY SHELL	101-20200	4,045.19
07/13	07/16/2013	144067	20048	BARNES DISTRIBUTION	101-20200	330.53
07/13	07/16/2013	144068	20022	BENCHMARK ENGINEERING INC	301-20200	44,698.28
07/13	07/16/2013	144069	20014	BORDER STATES ELECTRIC SUPPLY	604-20200	4,196.12
07/13	07/16/2013	144070	30084	CARDMEMBER SERVICE	603-20200	5,484.57
07/13	07/16/2013	144071	30086	CARPENTER, JULIE	101-20200	10.00
07/13	07/16/2013	144072	170001	CENTURY LINK	101-20200	284.47
07/13	07/16/2013	144073	30068	CHAD, GREG	101-20200	90.00
07/13	07/16/2013	144074	30026	COMO LUBE & SUPPLIES INC	101-20200	138.94
07/13	07/16/2013	144075	30072	COMPUTER WORLD	101-20200	553.80
07/13	07/16/2013	144076	40030	DULUTH CLINIC	602-20200	25.00
07/13	07/16/2013	144077	50048	ENERGY INSIGHT INC	604-20200	339.90
07/13	07/16/2013	144078	500012	ERA LABORATORIES INC	602-20200	528.50
07/13	07/16/2013	144079	60026	FASTENAL COMPANY	101-20200	78.91
07/13	07/16/2013	144080	60042	FLUID-TECH	101-20200	559.88
07/13	07/16/2013	144081	60009	FRED FAUST	101-20200	21.32
07/13	07/16/2013	144082	70016	GOPHER STATE ONE CALL INC	604-20200	68.25
07/13	07/16/2013	144083	70028	GREATER MINNESOTA AGENCY INC	101-20200	222.00
07/13	07/16/2013	144084	80032	HARTIKKA, TERRY	101-20200	700.00
07/13	07/16/2013	144085	80022	HAWKINS INC	602-20200	4,819.40
07/13	07/16/2013	144086	80001	HILLYARD/HUTCHINSON	101-20200	8,475.13
07/13	07/16/2013	144087	80010	HOMETOWN ELECTRIC	101-20200	116.11
07/13	07/16/2013	144088	80037	HOMETOWN MEDIA PARTNERS	101-20200	195.75
07/13	07/16/2013	144089	7097	JERRY LAWRENCE	101-20200	200.00
07/13	07/16/2013	144090	120013	L & L RENTALS INC	101-20200	154.97
07/13	07/16/2013	144091		Information Only Check	101-20200	.00 V
07/13	07/16/2013	144092	120006	L & M SUPPLY	101-20200	1,663.25
07/13	07/16/2013	144093	120048	L'ALLIER, TABITHA	101-20200	270.00
07/13	07/16/2013	144094	120047	LAURENTIAN CHAMBER OF COMMERC	101-20200	2,500.00
07/13	07/16/2013	144095	120002	LAWSON PRODUCTS INC	101-20200	684.32
07/13	07/16/2013	144096	120052	LEHMAN FABRICATING INC	101-20200	822.94
07/13	07/16/2013	144097	130030	MACQUEEN EQUIPMENT	603-20200	446.14
07/13	07/16/2013	144098	130041	MESABI BITUMINOUS	101-20200	2,407.69
07/13	07/16/2013	144099	130004	MESABI DAILY NEWS	101-20200	218.75
07/13	07/16/2013	144100	130006	MESABI HUMANE SOCIETY	101-20200	1,500.00
07/13	07/16/2013	144101	7096	MICHELE ROLANDSON	101-20200	100.00
07/13	07/16/2013	144102	140026	MINNESOTA ENERGY RESOURCES	602-20200	82.13
07/13	07/16/2013	144103	130008	MINNESOTA MUNICIPAL UTILITIES	604-20200	2,737.50
07/13	07/16/2013	144104	130009	MINNESOTA POWER (ALLETE INC)	604-20200	61,092.08
07/13	07/16/2013	144105	130010	MINNESOTA UC FUND	101-20200	493.00
07/13	07/16/2013	144106	130075	MN DEPT OF LABOR AND INDUSTRY	101-20200	100.00
07/13	07/16/2013	144107	130031	MOUNTAIN IRON ECONOMIC DEV	102-20200	55,338.14
07/13	07/16/2013	144108	140052	NORTHEAST SERVICE COOPERATIVE	101-20200	52,257.34
07/13	07/16/2013	144109	140056	NORTHLAND TRUST SERVICES INC	601-20200	28,975.63
07/13	07/16/2013	144110	140008	NORTHTRAX EQUIPMENT/POWERPLAN	101-20200	67.75
07/13	07/16/2013	144111	140065	NYMAN, KEITH	101-20200	240.00
07/13	07/16/2013	144112	40032	OFFICE OF ENTERPRISE TECHNOLOG	101-20200	420.54
07/13	07/16/2013	144113	160066	PACE ANALYTICAL SERVICES	601-20200	46.20
07/13	07/16/2013	144114	160023	POHAKI LUMBER	101-20200	352.93
07/13	07/16/2013	144115	160047	PONTINEN, RYAN	101-20200	110.00
07/13	07/16/2013	144116	160037	PRAXAIR	101-20200	63.59
07/13	07/16/2013	144117	180008	RADKO IRON & SUPPLY INC	101-20200	26.71
07/13	07/16/2013	144118	20015	ROBERT BROWN	101-20200	435.67

M = Manual Check, V = Void Check

Check Issue Date(s): 07/15/2013 - 07/16/2013

Per	Date	Check No	Vendor No	Payee	Check GL Acct	Amount
07/13	07/16/2013	144119	7094	SCOTT MAYRY	101-20200	60.00
07/13	07/16/2013	144120	190045	SERVICE SOLUTIONS	101-20200	24.58
07/13	07/16/2013	144121	190014	SHERWIN WILLIAMS	101-20200	2,597.29
07/13	07/16/2013	144122	190004	SKUBIC BROS INC	604-20200	445.87
07/13	07/16/2013	144123	190024	ST LOUIS CO SHERIFF LITMAN	101-20200	41,667.00
07/13	07/16/2013	144124	200003	TACONITE TIRE SERVICE	101-20200	2,191.14
07/13	07/16/2013	144125	200020	THE TRENTI LAW FIRM	101-20200	4,857.87
07/13	07/16/2013	144126	200028	TRI CITIES BIOSOLIDS DISPOSAL	602-20200	5,060.00
07/13	07/16/2013	144127	200006	TRIMARK INDUSTRIAL	101-20200	94.99
07/13	07/16/2013	144128	200036	TRITEC OF MINNESOTA INC	101-20200	534.38
07/13	07/16/2013	144129	210040	UNITED STATES TREASURY	101-20200	35.00
07/13	07/16/2013	144130	210009	USA BLUE BOOK	601-20200	91.33
07/13	07/16/2013	144131	220009	VERNS GREENHOUSE	101-20200	763.64
07/13	07/16/2013	144132	220014	VIKING INDUSTRIAL NORTH	101-20200	622.99
07/13	07/16/2013	144133	220004	VIRGINIA DEPARTMENT OF PUBLIC	604-20200	47,230.67
07/13	07/16/2013	144134	220020	VISA OR AMERICAN BANK CC PMT	101-20200	8,496.39
07/13	07/16/2013	144135	230001	WALKER GIROUX AND HAHNE LTD	101-20200	32,150.00
07/13	07/16/2013	144136	7095	WAL-MART	101-20200	250.00
07/13	07/16/2013	144137	230005	WESCO DISTRIBUTION INC	604-20200	179.67
07/13	07/16/2013	144138	60038	WRIGHT EXPRESS FINAN SERV CORP	101-20200	6,780.52
07/13	07/16/2013	144139	240001	XEROX CORPORATION	604-20200	633.35
07/13	07/16/2013	144140	260001	ZIEGLER INC	101-20200	4,023.16
07/13	07/16/2013	144141	260008	ZUPANCICH, DANNY J.	101-20200	40.00

Totals:

	<u>464,131.28</u>
Payroll-PP Ending 7/5/13	<u>71,039.90</u>
TOTAL EXPENDITURES	<u><u>\$535,171.18</u></u>



CITY OF MOUNTAIN IRON

"TACONITE CAPITAL OF THE WORLD"

PHONE: 218-748-7570 • FAX: 218-748-7573 • www.mtniron.com
8586 ENTERPRISE DRIVE SOUTH • MOUNTAIN IRON, MN • 55768-8260

RESOLUTION NUMBER 22-13

ACCEPTING BID

WHEREAS, pursuant to an advertisement for bids for Improvement Number 13-07, the proposed improvement of Unity Drive between the centerline of Diamond Lane and the centerline of Park Drive by construction, bids were received, opened and tabulated according to law, and the following bids were received complying with the advertisement:

Hibbing Excavating, Inc.	\$586,445.50
Ulland Brothers	\$698,000.00
KGM Contractors	\$709,956.80

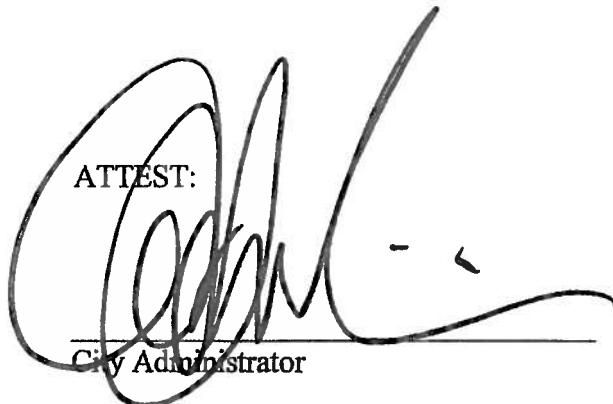
AND WHEREAS, it appears that Hibbing Excavating, Inc. of Hibbing, Minnesota is the lowest responsible bidder,

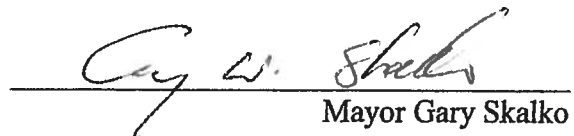
NOW THEREFORE, BE IT RESOLVED BY THE CITY COUNCIL OF THE CITY OF MOUNTAIN IRON, MINNESOTA:

1. The Mayor and City Administrator are hereby authorized and directed to enter into the attached contract with Hibbing Excavating, Inc. of Hibbing, Minnesota in the name of the City of Mountain Iron for Improvement Number 13-07, the improvement of Unity Drive between the centerline of Diamond Lane and the centerline of Park Drive by construction, according to the plans and specifications therefore approved by the City Council and on file in the Office of the City Administrator.
2. The City Administrator is hereby authorized and directed to return forthwith to all bidders the deposits made with their bids, except that the deposits of the successful bidder and the next lowest bidder shall be retained until a contract has been signed.

DULY ADOPTED BY THE CITY COUNCIL THIS 15th DAY OF JULY, 2013.

ATTEST:



City Administrator

Mayor Gary Skalko



CITY OF MOUNTAIN IRON

"TACONITE CAPITAL OF THE WORLD"
PHONE: 218-748-7570 • FAX: 218-748-7573 • www.mtniron.com
8586 ENTERPRISE DRIVE SOUTH • MOUNTAIN IRON, MN • 55768-8260

RESOLUTION NUMBER 23-13

APPROVING PLANS AND SPECIFICATIONS AND ORDERING ADVERTISEMENT FOR BIDS

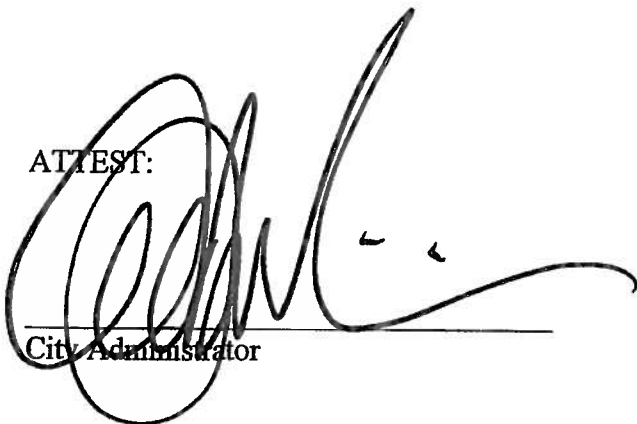
WHEREAS, pursuant to a motion passed by the City Council, the City Engineer has prepared plans and specifications for Improvement Number 13-10, the proposed sidewalk improvements to the Main Street, Mountain Avenue, and Enterprise Drive South by construction and has presented such plans and specifications to the council for approval;

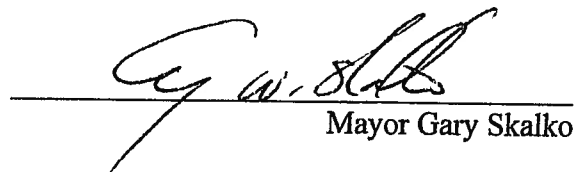
**NOW THEREFORE, BE IT RESOLVED BY THE CITY COUNCIL OF
MOUNTAIN IRON, MINNESOTA:**

1. Such plans and specifications, a copy of which is attached hereto and made a part hereof, are hereby approved.
2. The City Administrator shall prepare and cause to be inserted in the official paper an advertisement for bids upon the making of such improvement under such approved plans and specifications. The advertisement shall be published for 21 days, shall specify the work to be done, shall state that bids will be received by the clerk until 10:00 a.m. on July 31, 2013, at which time they will be publicly opened in the Mountain Iron Room of the Community Center by the City Administrator and engineer, will then be tabulated, and will be considered by the City Council at 6:30 p.m. on August 5, 2013, in the Mountain Iron Room of the Community Center. Any bidder whose responsibility is questioned during consideration of the bid will be given an opportunity to address the council on the issue of responsibility. No bids will be considered unless sealed and filed with the clerk and accompanied by a cash deposit, cashier's check, bid bond or certified check payable to the City Administrator for ten percent of the amount of such bid.

DULY ADOPTED BY THE CITY COUNCIL THIS 15th DAY OF JULY, 2013.

ATTEST:



City Administrator

Mayor Gary Skalko

COUNCIL LETTER 080513-IVB1

ADMINISTRATION

LOCOMOTIVE PAINTING

DATE: August 1, 2013
FROM: Craig J. Wainio
City Administrator

Staff solicited quotes for the painting of the shovel located in Locomotive Park. One quote was received from Swanson and Youngdale from Duluth and is enclosed for your review. It is recommended that Swanson and Youndale be awarded the project at their quoted price. This project is budgeted for in the 2013 Capital Improvement Budget.



June 24, 2013

Mr. Craig Wainio
City of Mountain Iron
8586 S. Enterprise Drive
Mountain Iron, MN 55768

Re: **City of Mountain Iron – Shovel Painting**
Mountain Iron, Minnesota

Dear Craig:

We propose to furnish labor, material and equipment necessary to complete work at the above referenced, for the sum of \$26,158.00.

Work to include:

- Pressure washing and cleaning surfaces prior to painting.
- Hand tool cleaning corrosion prior to painting.
- Applying one coat of Sherwin Williams Macropoxy 920-100 Epoxy Primer Sealer.
- Applying one coat of Sherwin Williams Macropoxy 646 Fast Cure Epoxy.
- Applying one coat of Sherwin Williams Acrolon 218 HS Polyurethane.
- Collection and disposal of waste water and debris.

Notes:

This proposal does not include temporary heat or weather enclosure.

This proposal does not include abrasive blasting prior to painting.

This proposal is based on brush and roller application of paint.

If you have any questions regarding this matter, please feel free to contact me.

Sincerely,

SWANSON & YOUNGDALE, INC.

A handwritten signature in black ink, appearing to read 'Joe Dagenais'.

Joe Dagenais
jmp



SHERWIN-WILLIAMS.
Industrial & Marine Coatings

COATING SYSTEM DATA SHEET

Project:	Mt Iron Shovel	System #
Owner:	City of Mt Iron, MN	
Specifier:	Scott Sinner	

Structure or Equipment: Shovel		
Application: Spray, Brush and Roll		
Substrate:	Carbon Steel	Exposure: UV
		Environment: Exterior Exposure

SURFACE PREPARATION	
SSPC-SP1	Solvent Clean per SSPC-SP1. Remove all surface contamination. (Use Pre Paint Cleaner + Degreaser)
SSPC-SP2+3	Prep per SSPC-SP2+3 Hand and/or Power Tool Cleaning Guidelines as needed. Try to remove as much corrosion as possible before coating application.

Note:

COATING SYSTEM		
Coat	Product	Dry Film Thickness (Mils)
Primer:	1 – Coat of SW Macropoxy 920-100 Epoxy Primer Sealer	1.0 – 1.5
Intermediate	1 – Coat of SW Macropoxy 646 Fast Cure Epoxy (Optional) Recommended for heavily corroded areas as an added corrosion barrier.	4.0 – 6.0
Finish Coat:	1 – Coat of Acrolon 218HS Polyurethane	2.0 – 4.0
Total System		7.0–11.5 mils dft.

Note:

Refer to attached Technical Data Sheets for additional surface preparation, application, equipment & environmental requirements.

Scott Sinner – Protective Coating Consultant
The Sherwin Williams CO. 4767 Miller Trunk Road. Hermantown, MN. 55811
(218) 340-5022 Cell Email: swrep6088@sherwin.com

COUNCIL LETTER 080513-IVD1

MERRITT DAY'S COMMITTEE

BLOCK STREETS REQUEST

DATE: August 1, 2013

FROM: Sally Peterangelo
Special Events Coordinator

Craig J. Wainio
City Administrator

The Merritt Day's Committee is requesting the following:

On Thursday, August 8th, Request to block Mountain Avenue from Main Street to the alley south of Benchmark Engineering, to allow for preparation of the Main Street Stage.

On Friday, August 9th, Request to block Main Street from Marble Avenue to Mesabi Avenue. Extend the Mountain Avenue blocking north to Locomotive Street. Beginning at 7:00 a. on Friday until Sunday, August 11th in the morning.

COUNCIL LETTER 080513-IVG
PARKS AND RECREATION BOARD
KCPRO RACING

DATE: August 1, 2013
FROM: Parks and Recreation Board
Craig J. Wainio
City Administrator

The Parks and Recreation Board recommends the following be approved by the City Council in relation to the KCPRO Racing Program:

- That the City is in full support and endorses the proposed KCPRO Racing event to be held on Maskenode Lake.
- That the City of Mountain Iron purchases a \$500 sponsorship for the event.
- That the City will assist with the event where possible.



June 17, 2013

Parks & Recreation Board
City of Mountain Iron
8586 South Enterprise Drive
Mountain Iron, Minnesota 55768

Attention: Mr. Craig J. Wainio

Re: 2014 Kids' Snowmobile Race Event

Dear Mr. Wainio:

Enclosed is a letter with information about our kids' non-profit snowmobile racing organization, KC PRO-East Oval Ice Racing. There was a brief discussion last Friday at Mountain Iron City Hall about scheduling one of our 2014 race events at Four-Mile Lake in Mountain Iron. We are advised that the first step would be to address the Parks & Recreation Board concerning this matter. It is my understanding that the City of Mountain Iron may be willing to provide financial and other support to KC PRO-East for a race event in Mountain Iron.

I understand that the next Parks & Recreation Board meeting will be held on Wednesday, June 26. We would ask that KC PRO-East be put on the agenda for that meeting. We would have representatives present at that meeting to answer questions and provide additional information about our organization and our race events. Please contact me about this matter at your earliest convenience.

Thank you and I'll look forward to hearing from you.

Sincerely,

A handwritten signature in black ink that reads "Cindy R. Kujala". The signature is written in a cursive style with a large initial "C".

Cindy R. Kujala, Treasurer

KC PRO-EAST OVAL ICE RACING

5405 Park Drive

Mountain Iron, MN 55768

Home# 735-8022 / Cell# 750-7777

Email: cindyr.kujala312@mediacombb.net



June 17, 2013

KC PRO-East Oval Ice Racing is a 20-plus year non-profit snowmobile racing organization for kids aged 4 – 14. Our races are intended for fun and to teach kids snowmobile safety. We are a family-run organization that encourages good sportsmanship by everyone involved in our races. Our race events get the kids outdoors to enjoy our Northland winters and the many lakes we race on throughout northeastern Minnesota.

In addition to snowmobile safety and good sportsmanship, our young racers are uniquely positioned to develop and learn many other skills that will serve them well throughout their lives. Good eye-hand coordination is necessary out on the racetrack, whether watching for the drop of the green flag commencing a race or to avoid other racers; the ability to plan strategy for winning a race; thinking, communicating and listening skills, and the list goes on and on. Importantly, too, when these young racers reach the age to get behind the wheel of an automobile on our streets and highways, they will be miles ahead of others their age in their ability to be safe drivers.

KC PRO-East membership extends across the entire Iron Range area, throughout the Twin Ports and from Cloquet to across the Canadian border, in addition to two other member families who come from outside of northeastern Minnesota. This past race season (January through March), we offered a dozen different race classes for Kitty Cat, 120 and 340 snowmobiles. Classes include Amateur, Stock and Improved Kitty Cat; Beginner (for ages 4 - 5 only), Amateur, Stock, Super Stock, and Improved 120, as well as the faster Sprint 120, Pro 206 and 120 Champ classes for the more experienced drivers; and the 340 Junior Novice class for older racers. There are race classes for all levels of experience and all ages within the 4 – 14 age group. As the racers master the beginning classes, they move up through the ranks of faster sleds and more competitive racing. Throughout the race season (and during the off-season as well), the dads are generally the chief mechanics keeping the sleds running and changing gears for the different classes.

In March this year, KC PRO-East hosted the 2013 Northern Nationals, the championship races for the 4 – 14 year old age group of oval ice racers. This two-day event brought 45 families to Side Lake from throughout Minnesota, as well as from Wisconsin and Canada. Other race groups that participated in the event with KC PRO-East were KC PRO-West (with membership from northwestern Minnesota), Kids Pro Ice (with membership from the Twin Cities and surrounding areas), and WKSRA (Wisconsin Kids Snowmobile Racing Association, with

membership in northern Wisconsin). The successful event saw 58 racers compete in 18 race classes. We had a total of 181 race entries. It was a large and successful two-day, dawn-to-dusk racing event.

All of KCPRO-East's race events are permitted and insured. We operate under the rules of the ISR (International Snowmobile Racing), a service organization that develops racing guidelines for the individual clubs and organizations so that snowmobile races are run in an organized and safe manner. Our racers are required to wear specified safety gear; the snowmobiles are teched to guarantee compliance with regulations; we're required to have stand-by EMS personnel at all race events; and we follow a variety of other rules to ensure the safety of our racers and everybody involved in the race events.

KCPRO-East is proud to have sponsorship and support from individuals, businesses and municipalities across our membership area. We also do a variety of fundraising to support our organization and we get out into the communities to tell others about what we're all about. Last summer we were the top seller in the State of Minnesota of the popular Sno-Barons' Hay Days Grass Drags raffle tickets that are sold annually. In addition, we do highway clean-up on Highway 37 between Hibbing and Eveleth as part of the State of Minnesota's Adopt-A-Highway program. KCPRO-East is also a Minnesota United Snowmobiles Association (MnUSA) member. As you may know, MnUSA is a 35 year organization that works to protect, preserve and promote the sport of snowmobiling throughout the State of Minnesota.

More information about KCPRO-East can be found on our website, www.KCPROEAST.com. Please also feel free to contact any officer or KCPRO-East member or email kcproeast@gmail.com.

2013 KCPRO-East Officers
www.KCPROEAST.com

President Brandon Anderson
Chisholm, MN / 218-780-7179
Email: kcproeast@gmail.com

Vice-President Jason Tucker
Devlin, Ontario / 807-486-0479

Secretary Kelly Kuras
Proctor, MN / 218-390-2488

Treasurer Cindy Kujala
Mtn. Iron, MN / 218-735-8022
Email: cindyr.kujala@mchsi.com



COUNCIL LETTER 080513-IVH
PUBLIC HEALTH AND SAFETY
FIRE DEPARTMENT

DATE: August 1, 2013
FROM: Public Health and Safety Board
Craig J. Wainio
City Administrator

The Public Health and Safety Board recommends the following be approved by the City Council in relation to the Mountain Iron Fire Department:

- That the enclosed, modified Position Analysis for the Assistant Fire Chief be approved so the hiring of the Assistant Fire Chief can move forward.
- Authorize the posting for a Captain. Once an assistant Fire Chief is appointed a Captains Position will open due to the fact that both applicants for the Assistant Fire Chief are Captains.
- Authorize the advertisement for Firefighters and EMT's.

CITY OF MOUNTAIN IRON POSITION ANALYSIS

POSITION TITLE: Assistant Fire Chief

SUPERVISOR: Fire Chief

PRIMARY OBJECTIVE OF POSITION:

The primary objective of this position is to assist the Fire Chief in performing a variety of technical, administrative, and supervisory work in planning, organizing, directing and implementing fire prevention and suppression to prevent or minimize the loss of life and property by fire.

RESPONSIBILITIES:

- ◆ Assistant Chief will be a part of the command structure on all calls unless assigned a different duty.
- ◆ Will take command at all calls the chief is not at.
- ◆ Will oversee all truck repairs, maintenance and scheduling all yearly tests.
- ◆ Assistant Chief will assist in all personal issues in the Fire Department.
- ◆ Participates in fire drills and classes in firefighting, hazardous materials, and related subjects.
- ◆ Presents programs to the community on safety and fire prevention topics.
- ◆ Assigns personnel and equipment to such duties and uses as the service requires; evaluates the need for and recommends the purchase of new equipment and supplies.
- ◆ Attends conferences and meetings to keep abreast of current trends in the field; represents the City Fire Department in a variety of local, county, state and other meetings as assigned.
- ◆ Other duties as apparent or as delegated.

KNOWLEDGE, SKILLS AND ABILITIES:

- ◆ Knowledge of fire suppression and prevention procedures, techniques, and equipment.
- ◆ Knowledge of first aid and resuscitation.
- ◆ Knowledge of applicable laws, ordinances, standard operating procedures and regulations.
- ◆ Ability to supervise subordinate personnel.
- ◆ Ability to exercise sound judgment in evaluating situations and in making decisions.
- ◆ Ability to effectively give and receive verbal and written instructions.
- ◆ Ability to perform strenuous physical activity.

TRAINING AND EXPERIENCE:

- ◆ Graduation from high school or equivalent.
- ◆ A valid State driver's license.
- ◆ Four (4) years prior experience in fire fighting and prevention with at least two (2) years as an officer.

**COUNCIL LETTER 080513-VIA
ADMINISTRATION
RESOLUTION NUMBER 24-13**

DATE: August 1, 2013
FROM: Craig J. Wainio
City Administrator

Resolution Number 24-13 closes out the Bluebell and Daffodil paving project which was completed in 2012. At the next meeting a Resolution Declaring the Costs and Ordering the Preparation of an Assessment Role will be presented. This is all part of the Special Assessment process.



CITY OF MOUNTAIN IRON

"TACONITE CAPITAL OF THE WORLD"

PHONE: 218-748-7570 • FAX: 218-748-7573 • www.mtniron.com
8586 ENTERPRISE DRIVE SOUTH • MOUNTAIN IRON, MN • 55768-8260

RESOLUTION NUMBER 24-13

ACCEPTING WORK

WHEREAS, pursuant to a written contract signed with the City on August 24, 2011, Mesabi Bituminous of Gilbert, Minnesota has satisfactorily completed Improvement Number 11-05, the proposed improvement of Bluebell Avenue and Daffodil Avenue between the centerline of Unity Drive and the centerline of Jasmine Street by reconstruction or overlayment in accordance with such contract,

NOW THEREFORE, BE IT RESOLVED BY THE CITY COUNCIL OF THE CITY OF MOUNTAIN IRON, MINNESOTA, that the work completed under said contract is hereby accepted and approved, and,

BE IT FURTHER RESOLVED, that the City Administrator and Mayor are hereby directed to issue a proper order for the final payment on such contract, in exchange for the contractor's receipt evidencing payment in full.

DULY ADOPTED BY THE CITY COUNCIL THIS 5th DAY OF AUGUST, 2012.

ATTEST:

Mayor Gary Skalko

City Administrator

COUNCIL LETTER 080513-VIB

ADMINISTRATION

RESOLUTION NUMBER 25-13

DATE: August 1, 2013
FROM: Craig J. Wainio
City Administrator

Resolution Number 25-13 closes out the County Road 7 water main extension project which was completed in 2012. At the next meeting a Resolution Declaring the Costs and Ordering the Preparation of an Assessment Role will be presented. This is all part of the Special Assessment process.



CITY OF MOUNTAIN IRON

"TACONITE CAPITAL OF THE WORLD"

PHONE: 218-748-7570 • FAX: 218-748-7573 • www.mtniron.com
8586 ENTERPRISE DRIVE SOUTH • MOUNTAIN IRON, MN • 55768-8260

RESOLUTION NUMBER 25-13

ACCEPTING WORK

WHEREAS, pursuant to a written contract signed with the City on June 5, 2012, Ulland Brothers of Cloquet, Minnesota has satisfactorily completed Improvement Number 11-05, the proposed to improvements to the Mountain Iron Water System along County Road 7 between Spruce Drive and Southern Drive by installing a water main in accordance with such contract,

NOW THEREFORE, BE IT RESOLVED BY THE CITY COUNCIL OF THE CITY OF MOUNTAIN IRON, MINNESOTA, that the work completed under said contract is hereby accepted and approved, and,

BE IT FURTHER RESOLVED, that the City Administrator and Mayor are hereby directed to issue a proper order for the final payment on such contract, in exchange for the contractor's receipt evidencing payment in full.

DULY ADOPTED BY THE CITY COUNCIL THIS 5th DAY OF AUGUST, 2012.

ATTEST:

Mayor Gary Skalko

City Administrator

COUNCIL LETTER 080513-VIA

ADMINISTRATION

RESOLUTION NUMBER 26-13

DATE: August 1, 2013
FROM: Craig J. Wainio
City Administrator

Resolution Number 26-13 accepts the petition for vacation and orders a public hearing on that vacation. In mid July the received a petition from Northwards Properties for the vacation of Commerce Street and a part of Park Ridge Drive in the Rock Ridge Development. This vacation is warranted due to the proposed new County Road 102 right-of-way and the removal of Commerce Street due to the Walmart Project. This Resolution would set the hearing for the first meeting in September, with the assumption that the meeting will be moved to Tuesday in light of the Labor Day Holiday.



CITY OF MOUNTAIN IRON

"TACONITE CAPITAL OF THE WORLD"

PHONE: 218-748-7570 • FAX: 218-748-7573 • www.mtniron.com
8586 ENTERPRISE DRIVE SOUTH • MOUNTAIN IRON, MN • 55768-8260

RESOLUTION NUMBER 26-13

SETTING A PUBLIC HEARING ON A VACATION COMMENCED BY A PETITION OF A MAJORITY OF ABUTTING LANDOWNERS

WHEREAS, a petition signed by the majority of property owners abutting Commerce Street in the City of Mountain Iron was received by the City Administrator on the 15th day of July, 2013; and

WHEREAS, the petition requested that the City Council pursuant to Minnesota Statute §412.851 vacate all of Commerce Street and a portion of Park Ridge Drive between the Eastern boundary of the Rock Ridge Development Plant and the commencement of Commerce Street.

WHEREAS, the City Administrator has reviewed and examined the signatures on said petition and determined that such signatures constitute a majority of the landowners abutting upon the street to be vacated; and

WHEREAS, a copy of said petition is attached hereto.

NOW THEREFORE, BE IT RESOLVED BY THE CITY COUNCIL OF MOUNTAIN IRON, COUNTY OF SAINT LOUIS, MINNESOTA, that the Council will consider the vacation of such street and a public hearing shall be held on such proposed vacation on the 3rd day of September, 2013, before the City Council in the Mountain Iron Room located at 8586 Enterprise Drive at 6:30 pm.

The City Clerk is hereby directed to give published, posted and mailed notice of such hearing as required by law.

DULY ADOPTED BY THE CITY COUNCIL THIS 5th DAY OF AUGUST, 2013.

Mayor Gary Skalko

ATTEST:

City Administrator

HANFT FRIDE
A PROFESSIONAL ASSOCIATION

1000 U.S. BANK PLACE
130 WEST SUPERIOR STREET
DULUTH, MINNESOTA 55802-2094
TELEPHONE: 218/722-4766
FAX: 218/529-2401
WWW.HANFTLAW.COM

July 12, 2013

WRITER'S DIRECT DIAL
218/529-2453
WRITER'S EMAIL
tec@hanftlaw.com

Mr. Craig Wainio
City Administrator
City of Mountain Iron
8586 Enterprise Drive South
Mountain Iron, MN 55768

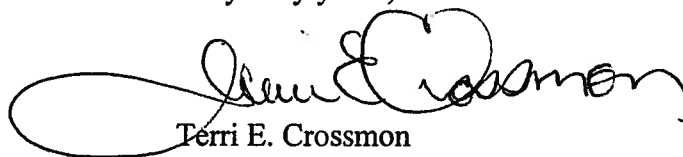
Re: Northward Properties/Rock Ridge Development

Dear Mr. Wainio:

Enclosed please find our Petition for Vacation of Commerce Street/Park Ridge Drive. I understand that there is not a fee to process the enclosed and suspect it will be placed on the August 5th Council Agenda. If my understandings are not correct, kindly let me know.

Thank you.

Very truly yours,



Terri E. Crossmon
Paralegal

tec
Enclosures

c: Mr. William M. Burns
Mr. Rockie L. Kavajecz

GILBERT W. HARRIS*
WILLIAM M. BURNS
JOHN D. KELLY*
FREDERICK A. DUDDERAR, JR.
TIM A. STROM*
R. THOMAS TORGERSON*
CHERYL M. PRINCE*
ROBIN C. MERRITT*
JENNIFER L. CAREY*
MARK D. PILON*
JACOB J. BAKER*
KENNETH A. KIMBER*
CATHERINE E. BAKER*
SCOTT A. WITTY*
DAVID L. TILDEN*
NORA C. SANDSTAD
HEATHER N. KJOS
RICHARD R. BURNS*, Of Counsel
*ALSO ADMITTED IN WISCONSIN

PETITION FOR VACATION

THE UNDERSIGNED, owner of the property adjacent to Commerce Street and Park Ridge Drive, within the Plat of Rock Ridge Development, legally described as follows, to-wit:

Lots 1 and 2, Block 1, Lot 1, Block 2 and Lot 1, Block 3, ROCK RIDGE DEVELOPMENT,

hereby Petitions the City of Mountain Iron for the vacation of those portion of each of Commerce Street and Park Ridge Drive within City of Mountain Iron as specifically located and identified on the attached Exhibit A, **specifically retaining an easement for all utilities.**

The property owned by the undersigned constitutes 100% of the property with frontage adjoining both sides of the streets for which vacation is sought.

The vacation of these portions of Commerce Street and Park Ridge Drive, will accommodate a proposed relocation of St. Louis County Road #102 as well as the expansion of adjacent development.

Dated: 7/09/2013.

NORTHWARD PROPERTIES, LLC

By  Its Chief Manager

~~STATE OF MINNESOTA~~)
~~COUNTY OF ST. LOUIS~~)
Wisconsin)
Douglas) ss.

The foregoing instrument was acknowledged before me this 9th day of July, 2013, by Rockie Kavajecz as Chief Manager of Northward Properties, LLC, a limited liability company under the laws of the State of Wisconsin, on behalf of the limited liability company.

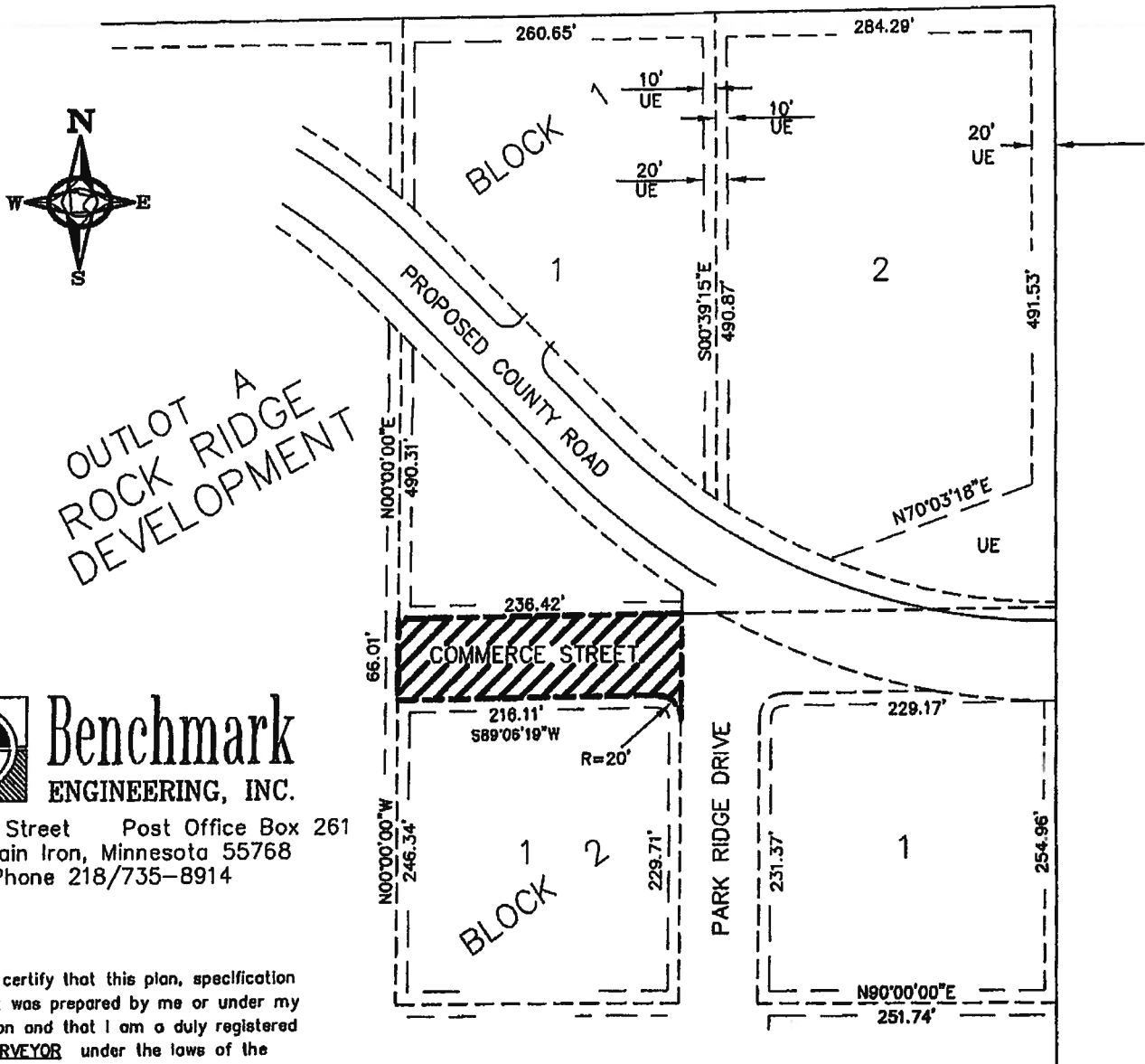
KIM D KAZ
NOTARY PUBLIC
STATE OF WISCONSIN
Commission expires 12/15/13


Notary Public

VACATION EXHIBIT

VACATION OF COMMERCE STREET

That part of Commerce Street dedicated in the recorded plat of "ROCK RIDGE DEVELOPMENT" located in Section 11, Township 58 North, Range 18 West, lying west of the northerly extension of the east line of Lot 1, Block 2, of said ROCK RIDGE DEVELOPMENT. Said parcel containing 0.4 acres more or less.



Benchmark
ENGINEERING, INC.

8878 Main Street Post Office Box 261
Mountain Iron, Minnesota 55768
Phone 218/735-8914

I hereby certify that this plan, specification or report was prepared by me or under my supervision and that I am a duly registered **LAND SURVEYOR** under the laws of the State of MINNESOTA.

[Signature]
Date: 12/27/2012 Reg. No. 43816

SPECIAL EVENTS PERMIT REQUIREMENTS

TYPE OF EVENT: Soumill Summer Jam
NAME OF PERSON/BUSINESS: Ajissa Sundberg / Soumill Saloon
NAME OF PERSON RESPONSIBLE FOR EVENT: Ajissa Sundberg
PHONE NUMBER: 218 391 3147 @ 218 741 8681 @
LOCATION OF EVENT: 5478 Mt. Iron Drive, Virginia MN 55792
DATE & TIME OF EVENT: Aug 24 2013
IS SANITATION FACILITIES AND POTABLE WATER AVAILABLE?: yes
IS SECURITY/CROWD MANAGEMENT PROVIDED FOR?: yes
WHAT TYPE OF PARKING AND/OR TRAFFIC ISSUES ARE PRESENT?: none
WILL EMERGENCY & MEDICAL SERVICES BE NEEDED?: no
WILL FIRE/SAFETY SERVICES BE NEEDED?: no
INSURANCE AFFIDAVIT: attached
PROVISIONS FOR CLEAN-UP OF PREMISES & SURROUNDING AREA/TRASH DISPOSAL: yes
ARE TEMPORARY CONSTRUCTION BARRICADES/FENCING NEEDED?: yes
PROVISIONS FOR REMOVAL OF ADVERTISING/PROMOTIONAL MATERIALS: no
WILL THERE BE ALCOHOL CONSUMPTION?: yes
IF SO, INSURANCE AFFIDAVIT: attached
FEE PAID PER CITY ORDINANCE: \$25.00 pd 7/26/13 Recpt# 2152416.
DATE(S) PERMIT IS ACTIVE FOR: August 24th, 2013 - MIDNITE

APPROVED BY: _____ DATE APPROVED: _____

ACORD

CERTIFICATE OF LIABILITY INSURANCE

DATE (MM/DD/YYYY)

11/13/2012

THIS CERTIFICATE IS ISSUED AS A MATTER OF INFORMATION ONLY AND CONFERS NO RIGHTS UPON THE CERTIFICATE HOLDER. THIS CERTIFICATE DOES NOT AFFIRMATIVELY OR NEGATIVELY AMEND, EXTEND OR ALTER THE COVERAGE AFFORDED BY THE POLICIES BELOW. THIS CERTIFICATE OF INSURANCE DOES NOT CONSTITUTE A CONTRACT BETWEEN THE ISSUING INSURER(S), AUTHORIZED REPRESENTATIVE OR PRODUCER, AND THE CERTIFICATE HOLDER.

IMPORTANT: If the certificate holder is an **ADDITIONAL INSURED**, the policy(ies) must be endorsed. If **SUBROGATION IS WAIVED**, subject to the terms and conditions of the policy, certain policies may require an endorsement. A statement on this certificate does not confer rights to the certificate holder in lieu of such endorsement(s).

PRODUCER Lee F. Murphy Inc. 2361 Highway 36 West St. Paul, MN 55113	<table border="1" style="width: 100%; border-collapse: collapse;"> <tr> <td style="width: 60%;">CONTACT NAME</td> <td style="width: 40%;">FAX (A/G. No.): 651.644.9137</td> </tr> <tr> <td>PHONE (A/G. No. Ext.): 651.644.7200</td> <td>FAX (A/G. No.): 651.644.9137</td> </tr> <tr> <td>EMAIL</td> <td></td> </tr> <tr> <td>ADDRESS</td> <td></td> </tr> <tr> <td>PRODUCER ID: 00028336</td> <td></td> </tr> </table>	CONTACT NAME	FAX (A/G. No.): 651.644.9137	PHONE (A/G. No. Ext.): 651.644.7200	FAX (A/G. No.): 651.644.9137	EMAIL		ADDRESS		PRODUCER ID: 00028336					
CONTACT NAME	FAX (A/G. No.): 651.644.9137														
PHONE (A/G. No. Ext.): 651.644.7200	FAX (A/G. No.): 651.644.9137														
EMAIL															
ADDRESS															
PRODUCER ID: 00028336															
INSURED Sundberg Enterprises LLC DBA: Sawmill Saloon & Restaurant 5478 Mountain Iron Drive Virginia, MN 55792	<table border="1" style="width: 100%; border-collapse: collapse;"> <tr> <td style="width: 80%;">INSURER(S) AFFORDING COVERAGE</td> <td style="width: 20%;">NAIC #</td> </tr> <tr> <td>INSURER A: West Bend Mutual</td> <td>15350</td> </tr> <tr> <td>INSURER B:</td> <td></td> </tr> <tr> <td>INSURER C:</td> <td></td> </tr> <tr> <td>INSURER D:</td> <td></td> </tr> <tr> <td>INSURER E:</td> <td></td> </tr> <tr> <td>INSURER F:</td> <td></td> </tr> </table>	INSURER(S) AFFORDING COVERAGE	NAIC #	INSURER A: West Bend Mutual	15350	INSURER B:		INSURER C:		INSURER D:		INSURER E:		INSURER F:	
INSURER(S) AFFORDING COVERAGE	NAIC #														
INSURER A: West Bend Mutual	15350														
INSURER B:															
INSURER C:															
INSURER D:															
INSURER E:															
INSURER F:															

COVERAGES **CERTIFICATE NUMBER: 12-13 WC/LL** **REVISION NUMBER:**

THIS IS TO CERTIFY THAT THE POLICIES OF INSURANCE LISTED BELOW HAVE BEEN ISSUED TO THE INSURED NAMED ABOVE FOR THE POLICY PERIOD INDICATED. NOTWITHSTANDING ANY REQUIREMENT, TERM OR CONDITION OF ANY CONTRACT OR OTHER DOCUMENT WITH RESPECT TO WHICH THIS CERTIFICATE MAY BE ISSUED OR MAY PERTAIN, THE INSURANCE AFFORDED BY THE POLICIES DESCRIBED HEREIN IS SUBJECT TO ALL THE TERMS, EXCLUSIONS AND CONDITIONS OF SUCH POLICIES. LIMITS SHOWN MAY HAVE BEEN REDUCED BY PAID CLAIMS.

INBR LTR	TYPE OF INSURANCE	ADDL COVR (INBR WVD)	POLICY NUMBER	POLICY BPP (MM/DD/YYYY)	POLICY BPP (MM/DD/YYYY)	LIMITS
	GENERAL LIABILITY <input type="checkbox"/> COMMERCIAL GENERAL LIABILITY <input type="checkbox"/> CLAIMS-MADE <input type="checkbox"/> OCCUR GENL. AGGREGATE LIMIT APPLIES PER: <input type="checkbox"/> POLICY <input type="checkbox"/> PROJ. <input type="checkbox"/> LOC					EACH OCCURRENCE \$ DAMAGE TO RENTED PREMISES (Per occurrence) \$ MED EXP (Any one person) \$ PERSONAL & ADV INJURY \$ GENERAL AGGREGATE \$ PRODUCTS - COM/PROP AGG \$
	AUTOMOBILE LIABILITY <input type="checkbox"/> ANY AUTO <input type="checkbox"/> ALL OWNED AUTOS <input type="checkbox"/> SCHEDULED AUTOS <input type="checkbox"/> MIXED AUTOS <input type="checkbox"/> NON-OWNED AUTOS					COMBINED SINGLE LIMIT (Per accident) \$ BODILY INJURY (Per person) \$ BODILY INJURY (Per accident) \$ PROPERTY DAMAGE (Per accident) \$ \$ \$
	<input type="checkbox"/> UMBRELLA LIAB <input type="checkbox"/> OCCUR <input type="checkbox"/> EXCESS LIAB <input type="checkbox"/> CLAIMS-MADE DEDUCTIBLE \$ RETENTION \$					EACH OCCURRENCE \$ AGGREGATE \$ \$ \$
A	WORKERS COMPENSATION AND EMPLOYERS' LIABILITY ANY PROPRIETOR/PARTNER/EXECUTIVE OFFICER/MEMBER EXCLUDED? <input type="checkbox"/> N/A (Mandatory in MN) If yes, describe under DESCRIPTION OF OPERATIONS below	Y/N	WCN 1496441	12/07/2012	12/07/2013	<input checked="" type="checkbox"/> WCB BY STATE LIMITS <input type="checkbox"/> OTHER E.L. EACH ACCIDENT \$ 500,000 E.L. DISEASE - BA EMPLOYEE \$ 500,000 E.L. DISEASE - POLICY LIMIT \$ 500,000
A	Liquor Liability		CPN 1496502	01/01/2013	01/01/2014	\$1,000,000 Each Common Cause \$2,000,000 Aggregate

DESCRIPTION OF OPERATIONS / LOCATIONS / VEHICLES (Attach ACORD 101, Additional Remarks Schedule, if more space is required)

RE: Restaurant located at 5478 Mountain Iron Drive, Virginia, MN 55792

CERTIFICATE HOLDER FAX: 218.748.7573 City of Mountain Iron Attn: Jill Anderson 8586 Enterprise Drive South Mt Iron, MN 55768	CANCELLATION SHOULD ANY OF THE ABOVE DESCRIBED POLICIES BE CANCELLED BEFORE THE EXPIRATION DATE THEREOF, NOTICE WILL BE DELIVERED IN ACCORDANCE WITH THE POLICY PROVISIONS. AUTHORIZED REPRESENTATIVE <div style="text-align: right;"><i>Steven F. Schultz</i></div> Steven Schultz/SHELLE
--	--



Mt. Iron · Virginia, Minnesota

5478 Mountain Iron Dr. Virginia, MN 55792

Phone: 218-741-8681. Fax: 218-741-3027. Email: info@sawmillsaloonrestaurant.com

July 26, 2013

Mountain Iron City Council
8586 South Enterprise Drive
Mountain Iron, MN 55768

Mountain Iron City Council,

Sundberg Enterprises, LLC dba The Sawmill Sawmill Saloon and Restaurant is requesting permission to serve alcohol at a wedding at the Mountain Iron Community Center on August 24, 2013.

Copies of our liquor liability insurance and our catering permit are on file with the city. If you have any questions, I can be reached at 218-741-8681 or 218-391-3147.

Thank you,

Alissa Sundberg
Owner, Sundberg Enterprises, LLC

COMMUNICATIONS

1. Habitat RV-Care-A Vanners, a thank you note for campground site donation.
2. Mountain Iron Senior Citizens Club, a thank you note for the new Bingo machine.
3. MIB Quarterback Club, a letter requesting a donation to the program.
4. Gary Skalko, a letter to Chris Knight at the Mesabi Daily News.
5. Heart of the Continent Partnership, a letter requesting funding for their HOCP/National Geographic Geotourism Initiative 2013.

City of Mountain View -

We want to send you a Special
Thank you for donating the Compl-
ground site at the West Turb House
Complex for the Habitat RV-Care
a - Vanne build in Virginia from
July 21 - Aug 3, 2013. Your donation
makes our lives be stronger by
us knowing we have beautiful,
safe sites for our RV's during the
3 weeks we work on the two Habitat
homes in Virginia. Thanks for your
donation. RV-Care-A-Vanne
Virginia RV Build

Mayor Skelbo, City Council
Members and City Staff.

Thank you for the
Briggs Machine, we
will enjoy using it
and hope the community
organizations and school
and non-profit groups
will do so also.

Again "Thanks"
Met Lane Senior Citizens

MIB Quarterback Club

5720 Marble Ave.

Mountain Iron, MN 55768

Fall temperatures are going to be upon us, and that means another year of exciting RANGER FOOTBALL. The team will take to Dolan Field August 29th, 2013. Come watch the team take on a challenge of another season.

The MIB Quarterback Club would like to encourage you to become a 2013 Football Sponsor and help us support the football program that involves youth of all ages. Your contribution will assist us in purchasing safety equipment such as helmets, pads, and other football equipment, as well as defraying traveling expenses. The cost of the program is growing considerably each year and the team would like your help. Please be aware that this does not include only one group, we work to provide necessary items which are not covered under the school budget for all levels of the sport. Please consider a donation to the MIB Football Program.

\$25.00 Safety Zone Club

\$50.00 Field Goal Club

\$100.00 Touchdown Club

All of the businesses that donate will be recognized on our football program as well as on a banner that will be displayed at our football field. The MIB Quarterback Club greatly appreciates your consideration, and thanks you in advance for your contribution.

Sincerely,

MIB Quarterback Club Coaches and Members

2013 Mt.Iron/Buhl Football Supporter

Name of Business/Organization _____

Address _____

Level of Contribution (Please Check One)

_____ Safety Zone Club (\$25.00)

_____ Field Goal Club (\$50.00)

_____ Touchdown Club (\$100.00)

Please Mail To:

Mt.Iron/Buhl Quarterback Club

c/o Mt. Iron-Buhl High School

5720 Marble Ave.

Mt.Iron, MN 55768

Hi Chris - (KNIGHT)

Enclosed is a attached onion which appeared in Saturday's MON.

Also, enclosed is a copy of the Unity Drive Assessment Estimates:

STATUS TO US.

Onions: There appears to be a political scandal brewing in Mountain Iron city government. Public records show that there are property owners along the route of the new street to be constructed between South Grove and Unity 2. Some are going to be assessed thousands of dollars by the city. One will be getting by for free-nothing-zip-nada.

Orchids: A dozen pretty pink ones
Iron City Council

Chris, I assume Bill is still out after his accident. That's why I'm writing to you. However, my writings / discussions with Bill always fell on 'deaf ears', so maybe writing to you can lead to some different results.

Chris - as you can see the attached onion is completely untrue. It's a downright total lie, and these happen virtually on a weekly basis. The enclosed Assessment sheet, which is public record, shows clearly all 14 property owners along this road projects being assessed. There are no freebies as the onion

states. The assessment rate is 10% for all 14, and the amount they are assessed is based upon how much road footage they own.

Chris, what I am asking again, have pleaded on this more than once with Bill, is when it comes to city issues dealing with money, etc. such as this onion, would your staff at least contact Craig Wainio at City Hall to get the official, factual information before printing these downright lies. I'm sure Craig would be more than happy to fax that information to your staff. Signal onions would also alleviate the problem, but unfortunately, I don't see that ever happening!

Chris, Bill repeatedly told me that public-officials must be "thick-skinned." Believe me, I am thick-skinned, I've gotten more onions from Roskoski + his "Crow" than anybody. Obama may be a close second, but I have six years in office on him!

I could care less about the "personal attack" onions, bring them

on! But, onions totally misinforming / lying about city issues relating to money, etc. is a totally different story. These onions should be "investigated" by your staff before they are printed.

Unfortunately, there are people out there who see these totally untrue onions in print and since it is in print they assume that it must be true. Chris, your paper, the MON, deserves better journalism than this!

Chris, like I said earlier, this is far from a new topic. I have discussed it more than once with Bill to no avail! I guess all I am really asking is for "investigation" by your staff, before such onions as the enclosed are printed!

Again, Chris, thank you for your time. If you have any questions / concerns, I would gladly meet with you any time. I can be reached at 750-7201.

Sincerely,
cc. Craig Wainio
Craig W. Skalko

Unity Drive Extension Assessment Estimates

Name	Address	City	Parcel Code	Feet	Estimated Assessment
City of Mountain Iron	8586 Enterprise Drive South	Mountain Iron MN 55768		204	\$1,874.85
* Thomas R & Stefanie Nicolanci	8821 Unity Drive	Mountain Iron MN 55768	175-0070-01315	214.5	\$1,971.35
Thomas R & Stefanie Nicolanci	8821 Unity Drive	Mountain Iron MN 55768	175-0070-01325	1091	\$10,026.77
Amanda L Claesson	5416 Garden Drive	Mountain Iron MN 55768	175-0070-01326	230	\$2,113.80
ISD 712	5720 Marble Avenue	Mountain Iron MN 55768	175-0070-01430	1306	\$12,002.72
ISD 712	5720 Marble Avenue	Mountain Iron MN 55768	175-0071-00870	232	\$2,132.18
Brian K Burress	5472 Park Drive	Mountain Iron MN 55768	175-0055-02682	87	\$799.57
Brian Buffetta	8384 Balsam Drive	Mountain Iron MN 55768	175-0055-02705	149	\$1,369.38
Rita L Brabec	5481 Garden Drive	Mountain Iron MN 55768	175-0070-01495	137	\$1,259.09
Thomas R & Stefanie Nicolanci	8821 Unity Drive	Mountain Iron MN 55768	175-0070-01494	193	\$1,773.76
Theodore J & Julie A Erchul	8762 Unity Drive	Mountain Iron MN 55768	175-0070-01488	232	\$2,132.18
Corey & Alicia Atkins	8524 Raintree Drive	Mountain Iron MN 55768	175-0070-01481	232	\$2,132.18
Byron T Negen	5490 Davis Avenue	Mountain Iron MN 55768	175-0070-01491	66	\$606.57
* Wayne W & Lynn M Pohia	8754 Unity Drive	Mountain Iron MN 55768	175-0070-01487	232	\$2,132.18
* Daniel A Yernatich	8750 Unity Drive	Mountain Iron MN 55768	175-0070-01484	232	\$2,132.18
* Leonard J Roskoski	1735 211th Lane NE	East Bethel MN 55011	175-0070-01441	1303	\$11,975.15
* Lyle Johnston & Sally L Aspin	5442 Diamond Lane	Mountain Iron MN 55768	175-0130-00350	116	\$1,066.09
Totals				6256.5	\$57,500.00

5/14 'Assessed' property owners attend public hearings to voice displeasure (36%)
5/14 'Assessed' property owners attend public hearings to voice displeasure (36%)
5/14 'Assessed' property owners attend public hearings to voice displeasure (36%)
5/14 'Assessed' property owners attend public hearings to voice displeasure (36%)



Heart of the Continent Partnership

Working together to sustain and celebrate the lakes, forests, and communities on the Ontario/Minnesota border

July 5, 2013

Mayor Gary Skalko
City of Mountain Iron
8586 Enterprise Drive South
Mountain Iron, MN 55768

Dear Mayor Salko:

We are writing today to introduce the Heart of the Continent Partnership (HOCP) and to submit a funding request for our HOCP/National Geographic Geotourism Initiative 2013. We have enclosed some materials about the Partnership and a case statement for the actual initiative. In summary, HOCP will be partnering with the National Geographic Society Maps Division (NGS) to create and maintain a National Geographic co-branded Geotourism website and map for the Heart of the Continent region. We believe this collaborative undertaking will create a sustained public-private alliance to enhance economic vitality, develop local geotourism-based businesses and opportunities, and preserve the natural and cultural heritage of the entire Heart of the Continent region.

This collaborative effort will significantly enhance the economic impact of tourism in the HOCP region by creating a regional identity and by promoting our region globally as part of a growing network of National Geographic co-branded destinations. Superior cartographic standards, web design, content management and expertise in the geotourism approach make NGS uniquely qualified to cooperate with local partners on this project. NGS's Geotourism Map Guides promote both responsible economic development and stewardship of the resources featured on the website.

Within the HOCP region, generally, and your area specifically, this effort will:

- catalyze local participation in tourism planning and growth,
- help local residents learn about their natural, cultural, historic, and scenic resources,
- promote wise destination stewardship,
- inform tourists about the distinctive attractions and qualities of the region, and
- help jumpstart the emerging tourism initiatives in your area and enhance the sustainability of gateway communities.

HOCP requests support of this important project from City of Mountain Iron on behalf of the numerous organizations and businesses within your service area that will benefit from increased tourism.

Specifically, we are seeking:

1. Monetary grant of \$2000 to support the project. Your funding will be used to engage NGS and to support some of the project management costs of the project. To date we have received funding commitments for two-thirds of our needed funds (see Proforma Budget, attached). Importantly, your support, along with that of similar sized organizations and communities, will be a nice balance to the larger blocks of funding we've received from larger entities on both sides of the border, and will essentially complete the funding needed to contract with NGS.

and:

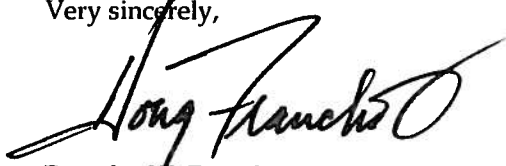
Mayor Gary Skalko
City of Mountain Iron
July 5, 2013

2. In-kind support in the form of technical assistance from a staff person to either serve on or advise the Geotourism Stewardship Council as it gathers and juries content for the website/map.

We very much appreciate City of Mountain Iron's willingness to learn about this important project and look forward to a positive response to our grant request. If it would be useful, we would be more than happy to meet with you at your convenience to answer any questions you might have about the Heart of the Continent Partnership or the National Geographic Geotourism project.

Someone from our planning committee will be calling you in the next several days to discuss this project with you and answer any questions.

Very sincerely,



Douglas W. Franchot
HOCP Steering Committee and
Chair, Voyageurs National Park Association
952-253-0080,
doug@franchotassociates.com



Frank Jewell
HOCP Steering Committee Chair and
St. Louis County Board
218-726-2450
jewellf@stlouiscountymn.gov

Enclosures/3

Project Case Statement: HOCP/National Geographic Geotourism Initiative 2013
Organizational Overview: Heart of the Continent Partnership
Proforma Budget: HOCP/National Geographic Geotourism Initiative 2013

Heart of the Continent Partnership / National Geographic Geotourism Initiative 2013



PROJECT OVERVIEW

The Heart of the Continent Partnership (HOCP) will partner with National Geographic Society (NGS) to create a regional geotourism initiative, including a map and website. Drawing input and involvement from a wide spectrum of local stakeholders, this geotourism project will help sustain and enhance the geographical character of the region—its environment, culture, aesthetics, heritage, and the well-being of its residents—by highlighting the outstanding natural, cultural and historical resources and historic gateway communities in the Heart of the Continent bi-national region. HOCP will become a part of NGS's network of interlinked geotourism websites, gaining great visibility, visitorship, and awareness for our region—and its wonderful natural and cultural assets.

PROJECT OUTCOMES

This economic development project will use a unified cross-border approach, the established collaborative structure of HOCP, and the brand power of NGS to increase visitation in the region.

Outcomes include:

- **Paper Map:** NGS will publish and promote a paper map of the Heart of the Continent.
- **Website:** An interactive map and website combines the region's opportunities is easily accessible and well used by people around the country and the world.
- **Worldwide Exposure:** Links between all the NGS geotourism sites will extend the reach and impact of efforts within the region. Web hits tracked.



- **Increased Use:** The attractions, parks, and communities promoted on the map and web site will note increased use. Measured by lodging tax receipts, number of visitors and international flights.
- **Increased Community:** this collaborative project will build lasting working relationships among communities and citizens who care about public lands.
- **Amplified Impact:** This project will amplify, not compete with existing efforts and budgets of partners.



The Heart of the Continent bi-national region

ABOUT HOCP

The Heart of the Continent Partnership (HOCP) is a coalition of land managers and local stakeholders working together on cross-border projects that promote the natural, cultural and economic health of the lakes, forests and communities on the Minnesota/Ontario border. Within this broad coalition, HOCP is developing a common identity and sense of belonging to the larger cross-border area, the Heart of the Continent, which consists of over 5 million acres (2 million hectares) of public lands. Along with the development of a common identity is the desire to create and sustain economic stability for the communities that surround these public lands.

DIVERSE PARTICIPATION

Both Heart Of The Continent Partnership and National Geographic Society have strong histories of successfully engaging a broad group of citizens and stakeholders. The Design Team (planning this effort) and the Geotourism Stewardship Council (jurying content for the map and website) will each be composed of a wide spectrum of leaders from around this border lakes region: federal, state and provincial land managers, tourism officials, county/city/provincial and state elected officials, local businesses, educators, scientists and other stakeholders. The process of actively gathering content through public meetings and also via website submissions will engage all citizens who are interested.

TIMELINE

The development of this project will span much of two years, and will conclude with a public launch in the fall of 2014. Thereafter, the website and the Geotourism Stewardship Council, will be ongoing.

- Spring 2013: Appoint Design Team
- January–September 2013: Raise resources necessary to proceed
- June 2013: Sign Contract with NGS
- June 2013: Recruit and convene a Geotourism Stewardship Council
- June 2013–September 2014: Design and Development (16 months)
- September 2014: Public unveiling of project
- September 2014 and beyond: Ongoing active management of website

JOIN US

To get involved, please contact project co-leads:

- **Mary Somnis**, Outreach and Tourism, Iron Range Resources and Rehabilitation Board & Steering Committee Member, HOCP.
218-735-3040, mary.somnis@state.mn.us
- **Doug Franchot**, Board Member, Voyageurs National Park Assoc. & Steering Committee Member, HOCP.
952-253-0080, doug@franchotassociates.com

ABOUT NATIONAL GEOGRAPHIC

Since 1888 the National Geographic Society (NGS) has been inspiring people to care about the planet and every living creature on it by promoting and funding natural and cultural conservation projects. In 2003, NGS inaugurated a constantly evolving collaborative product combining the expertise and the design capabilities of the NGS Maps Division, and the involvement of local people in tourism destinations to facilitate wise stewardship of cultural, historic, and natural resources. This Geotourism Map Guide (print, online, or both) is a catalytic tool to implement geotourism, defined as:

“tourism that sustains or enhances the geographical character of a place—its environment, culture, aesthetics, heritage, and the well-being of its residents.”

One of this effort's most powerful pieces is the collaborative effort that is developed to create and sustain the geotourism initiative.



HOCP Mission: The Heart of the Continent Partnership seeks to sustain and celebrate the health, beauty, diversity, and productivity of the natural and cultural resources of the border lakes region through collaboration to meet the needs of present and future generations.

The Heart of the Continent



Partnership

MISSION

The Heart of the Continent Partnership seeks to sustain and celebrate the health, beauty, diversity and productivity of the natural and cultural resources of the border lakes region through collaboration to meet the needs of present and future generations.

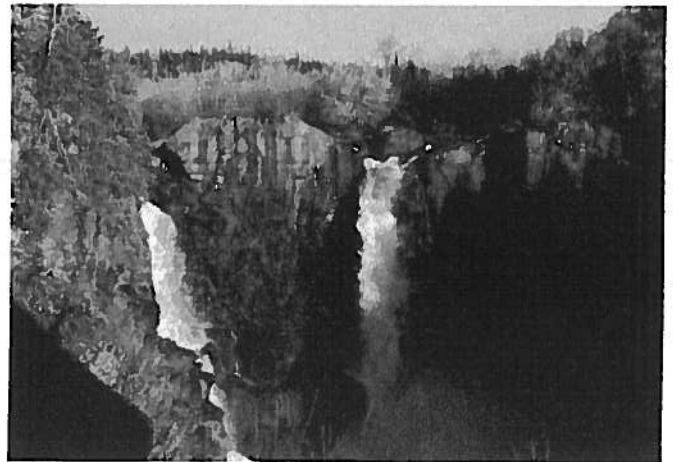
SHARED VALUES

The success of the Partnership is based on a commitment to several core values, including:

- **Open:** HOCP promotes mutual trust through a fair, open and communicative process.
- **Neutral Forum:** HOCP is a non-partisan forum where diverse groups can meet and seek new ways to work together.
- **Non-Policy:** HOCP does not take positions nor attempt to influence the policies of participants.

Who We Are

The Heart of the Continent Partnership (HOCP) is a Canadian-American coalition of land managers and local stakeholders working together on cross-border projects that promote the economic, cultural and natural health of the lakes, forests and communities on the Minnesota-Ontario border. Within this broad coalition, HOCP is developing a common identity and sense of belonging to the larger cross-border area, the Heart of the Continent, which



High Falls. Pigeon River Provincial Park

consists of over five million acres (two million hectares) of public lands. Along with the development of a common identity is the desire

to create and sustain economic stability for the communities that surround these public lands.

The Need for the Heart of the Continent Partnership

Because the Heart of the Continent ecosystem is an interconnected whole, a region-wide vision is necessary to ensure its sustainability.

The ecosystem's landscape is divided by all sorts of boundary lines: park and forest boundaries, county lines, even an international

border. These divisions have historically posed barriers to collaboration.

- Communities could better work together to reap benefits from marketing the region as a whole.
- Land managers could increase cooperation on plans that make sense for the connected

natural areas in a larger context.

Cooperative leadership among the Heart of the Continent Partnership is fostering increased knowledge, trust, projects, funding and effectiveness, which in turn will increase stature and sustainability of the region's public lands.

Heart of the Continent Partnership Goals

- To build region-wide dialogue, cooperation and capacity among communities, public land managers, conservation, recreation and industry groups to benefit our border region to enable vibrant communities to flourish alongside healthy public lands
- To create opportunities for groups to work together in new ways that can benefit the lakes, forests, wildlife and people of this ecosystem



ACTION STRATEGIES

HOCP participants have identified five broad action strategies as they work together on common goals and cross-border projects to advance the mission:

Increase respect for the land and its people: including developing an identity for—and celebrating—the transboundary region as a whole & translating this regional identity into social and economic value

Tap the power of collaborating across boundaries: including facilitating communication and trust between groups & facilitating resource sharing between groups

Promote scientific research and its applications: including sharing scientific research to inform decision-makers & encouraging cooperative scientific activities

Build awareness of and support for public lands: including expanding public perceptions of this large-scale habitat & encouraging and fostering a land ethic

Share resources to benefit public lands and communities: including facilitating collaboration among groups to improve public lands & promoting the balancing of nature and commerce in communities that neighbour public lands

CURRENT PROJECTS

Geotourism Initiative—an HOCP-National Geographic Collaboration

We are entering a partnership with National Geographic's Society (NGS) to designate the Heart of the Continent as a part of a growing network of regional geotourism destinations. The outputs of this effort will include a paper map of the region and, most importantly, a well-designed, interactive website that will enable potential visitors to see in one place the multiple attractions throughout the public lands and communities of our international region. Both will be promoted by NGS in their many venues and the website. This project will be another large step in building the regional identity of the Heart of the Continent. As we weave together our communities and stakeholders into trusting partnerships, we will significantly add to a sense of community and shared futures that will facilitate solving problems and working together for the common good.

Connecting Volunteers in the Heart of the Continent

We are convening conversations among partner groups on ways to encourage and coordinate volunteering across the Heart of the Continent region.

ONGOING PROJECTS

Regional Meetings

Representatives from participating organizations meet quarterly (the steering committee meets bimonthly), building relationships and developing ways to work together. The partnership has held more than a dozen general meetings in a variety of cities throughout the region. Each gathering, open to anyone, includes both a public lecture as well as a general meeting. Lecture topics have included: destination mountain biking, fire ecology in the forests of the HOCP region, sturgeon research in Voyageurs National Park and the history and culture of the Bois Forte Band of Chippewa. By increasing knowledge of and respect among the many stakeholder groups in the area, HOCP meetings have contributed to improved communications and have spawned new working relationships among leaders.

PAST HIGHLIGHTS

International Community Congress: *Balancing nature and commerce in communities that neighbour public lands*

The 2011 International Community Congress was a multi-day forum and training event held in Thunder Bay, ON and Grand Portage, MN.

The workshop brought together community teams from both sides of the international border with the purpose of learning how to best take advantage of the incredible natural resources of this area. Key results include the ten new initiatives, each with a commitment by its team to a timeline for completion, as well as new working relationships among the 90 leaders in attendance.



Canoe The Heart of the Continent

In 2009, HOCP organized a 18-day canoe expedition across the region as a way to meet two of its goals—build awareness of the region as an interconnected whole, and build relationships and good will among the diverse stakeholders in the region. Sixty partners took part in paddling a 27-foot (8.2 meter) canoe along the 35th mile (550 kilometer) route.



Getting Involved

The Heart of the Continent Partnership (HOCP) is open to all organizations who support HOCP's mission and who have a stake in the long-term health of the lakes, lands and communities on the Ontario/Minnesota border. At this time, HOCP is not a membership organization, but a loose network.

- **REGIONAL MEETINGS:** HOCP welcomes interested organizations to attend its quarterly meetings, which are a great opportunity to share ideas, meet colleagues and participate in HOCP's ongoing activities.
- **EMAIL COMMUNITY:** HOCP uses a listserv to distribute meeting announcements and opportunities for engagement. Sign up at : www.heartofthecontinent.org/get-involved



126 North 3rd Street; Suite 400
Minneapolis, MN 55401
Phone: 612-333-1858
Email: hocp@heartofthecontinent.org
Web: www.heartofthecontinent.org

HOCP Steering Committee Chair
Frank Jewell (218-726-2450)

HOCP Coordinator
Bret Hesla (612-333-1858)

Steering Committee Members, Affiliation

Tim Cochrane, Grand Portage National Monument
Paul Danicic, Friends of the Boundary Waters Wildns.
Doug Franchot, Voyageurs National Park Assoc.
Lynda Horman, Kakabeka Falls Provincial Park
Frank Jewell, St. Louis County Board
Brian McLaren, Lakehead University
Ardy Nurmi-Wilberg, Club Mesabi
Lisa Radosevich-Craig, Superior National Forest
Tawnya Schoewe, Voyageurs National Park
Joe Scipioni, PolyMet Mining
Mary Sommis, IRRRB
Chris Stromberg, Friends of Quetico Provincial Park

Landscape—An International Treasure

Several separately managed natural areas are encompassed by this landscape at the “heart of the continent,” including Quetico Provincial Park, Superior National Forest (including the Boundary Waters Canoe Area Wilderness), Voyageurs National Park, Fort William Historical Park, Grand Portage National Monument and numerous smaller Minnesota state forests and parks and provincial parks in Ontario, and vibrant gateway communities.



HOCP's Diverse Leadership

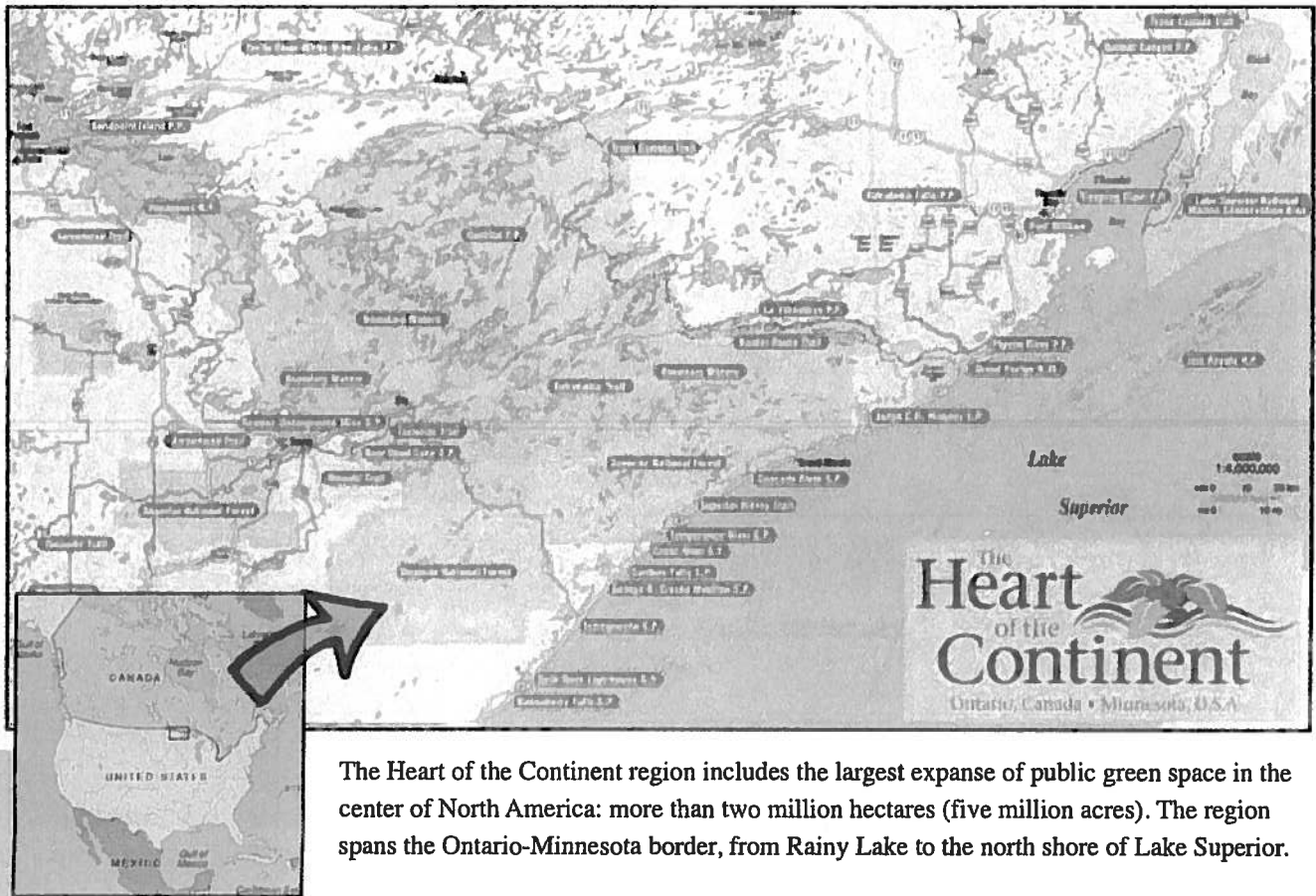
HOCP is led by an active steering committee, whose membership reflects the evolving diversity of the general partnership. The steering committee is composed of the heads (or lead staff) of all the public land agencies, as well as community leaders and major nonprofit players. These are individuals with a long history of involvement in the region and a deep interest in the future of the Heart of the Continent region.

Broad-Based Support

More than half of our support comes in the form of in-kind contributions of staff time and travel from our participating organizations, in general meetings, steering committee work and the planning and implementing joint projects. Partner organizations also help support HOCP operating expenses through voluntary, sliding-scale annual dues.

Organizations that financially support the work and programs of HOCP include: Arrowhead Regional Development Commission, Blandin Foundation, City of Thunder Bay, Fort William Historical Park, Friends of the Boundary Waters Wilderness, Grand Portage Band of Lake Superior Chippewa, Minnesota Forest Resources Council, Northeast Minnesota Regional Sustainable Development Partnership of the University of Minnesota, Northeast Minnesotans for Wilderness, Oberholzer Foundation, Ontario Parks, Quetico Foundation, Quetico Superior Foundation, Rainy Lake Conservancy, Trust for Public Land, United States Forest Service, United States National Park Service, Voyageurs National Park Association

The Heart of the Continent Region



The Heart of the Continent region includes the largest expanse of public green space in the center of North America: more than two million hectares (five million acres). The region spans the Ontario-Minnesota border, from Rainy Lake to the north shore of Lake Superior.

Who's Involved

The Heart of the Continent Partnership collaboration continues to grow as groups perceive the benefits of working together to promote the land and communities of these areas. The following 80+ organizations, listed alphabetically, have participated in one or more meetings in the past two years:

America's Byways Resource Center...Arrowhead Coalition for Multiple Use...Arrowhead Lodge and Resort...Arrowhead Regional Development Commission...Ash Trail Lodge...Atikokan, City of...Atikokan Economic Development Corporation...Boreal Forest and Community Resilience Project (at the Univ. of Minn. Institute on the Environment)...Canadian Parks and Wilderness Society (CPAWS)...Canoeing.com Limited...Club Mesabi...The Conservation Fund...Conservationists with Common Sense...Cook County Board of Commissioners...Cook County News Herald...Cook County Public Health and Human Services Advisory Committee...Cook County Visitors Bureau...Crane Lake Township...Destination Voyageurs National Park...Duluth Sister Cities International...Eaton Associates...Ely Chamber of Commerce...Ernest Oberholtzer Foundation...Eskakwa Eco-adventure Co...City of Eveleth...Forest Capital Partners...Fort William Historical Park...Friends of the Boundary Waters Wilderness...Friends of Chippewa Park...Friends of the Cloquet Valley State Forest...Friends of Quetico Provincial Park...Friends of Voyageurs National Park...Grand Portage Band of the Lake Superior Chippewa...Grand Portage Lodge and Casino...Grand Portage National Monument...Grand Portage State Park...City of Greenstone...Gunflint Trail Historical Society...Hartley Nature Center...Institute for Agriculture and Trade Policy...International Wolf Center...Iron Range Resources and Rehabilitation Board...Izaak Walton League...Kakabeka Falls Provincial Park Cluster...Koochiching County Board...Lakehead University...Laurentian Environmental Center...Minnesota Arrowhead Association...Minnesota Department of Natural Resources...Minnesota Environmental Partnership...Minnesota Forest Resources Council...Minnesota Power...Municipality of Neening...National Parks Conservation Association...Natural Resources Conservation Service...North of Superior Travel Association...Northeast Minnesota Sustainable Development Partnership...Northeastern Minnesotans for Wilderness...Ontario Parks...Ontario Trails Council...Polymet Mining...Quetico Foundation...Quetico Provincial Park...Quetico Superior Foundation...City of Ranier...Rainy Lake Conservancy...Rainy River First Nations...Raven Productions, Inc...Rivers, Trails and Conservation Assistance Program, National Park Service...Ryder-Walker Alpine Adventures...St. Louis County Board...Sandy Point Lodge...Sawbill Outfitters...Sawtooth Mountain Clinic...Sierra Club...Sleeping Giant Provincial Park...Split Rock Lighthouse Historic Site...Superior National Forest...The Nature Conservancy...Tourism Thunder Bay...Trans Canada Trail Ontario...Trust for Public Land...Two Harbors Chamber of Commerce...University of Minnesota Center for Hardwood Ecology...Urban Connections-Twin Cities...Voyageurs National Park...Voyageurs National Park Association...Wilderness Inquiry...Wilderness News

Heart of the Continent Partnership
HOCP/NATIONAL GEOGRAPHIC GEOTOURISM PROJECT

Proforma Budget

Revenue	Cash	In-Kind	Totals
Grants committed			
City of Duluth	\$40,000		
Thunder Bay Regional Tourism	40,000		
IRRRB	40,000		
Fort William Historical Park	20,000		
NMSDP	10,000		
St. Louis (MN) County	<u>10,000</u>		\$160,000
Grants submitted			
Musser Foundation	35,000		\$35,000
Other Grants under development (see attached)			
			\$122,000
In-Kind Contributions			
		\$300,000	<u>\$317,000</u>
TOTAL PROJECTED REVENUES			<u>\$617,000</u>
Expenses			
National Geographic Fees (Base Program)	\$170,000		
National Geographic Fees (Mobile Apps)	25,000		
HOCP Project Management (inc. overhead)	35,000	\$50,000	
Site Nomination and Screening		200,000	
Graphics and Web Design	15,000		
Promotion	10,000	50,000	
Contingencies	<u>10,000</u>	<u> </u>	
TOTAL PROJECTED EXPENSES			<u>\$565,000</u>
NET SURPLUS/(LOSS)			<u>\$52,000</u>

NOTE: This projected surplus should be viewed as coverage for grants not received as opposed to actual surplus. Any actual surplus will be used for on-going maintenance of the project and will be supplemented with advertising, fees, and grants. On-going expenses are currently estimated at \$20,000 per year.

6/30/2013

